

Anyone wishing to attend will need to call ahead at 913-684-0417 to reserve a seat as the meeting room has limited capacity. We are encouraging everyone to continue to view the meeting live via YouTube.

***Leavenworth County
Board of County Commissioners***

Regular Meeting Agenda
300 Walnut Street, Suite 225
Leavenworth, KS 66048
March 30, 2022
9:00 a.m.

- I. CALL TO ORDER
- II. PLEDGE OF ALLEGIANCE/MOMENT OF SILENCE
- III. ROLL CALL
- IV. PUBLIC COMMENT: Public Comment shall be limited to 15 minutes at the beginning of each meeting for agenda items **only** and limited to three minutes per person. Comments at the end of the meeting shall be open to any topic of general interest to the Board of County Commissioners and limited to five minutes per person. There should be no expectation of interaction by the Commission during this time.

Anyone wishing to make comments either on items on the agenda or not are encouraged to provide their comments in writing no later than 8:00 AM the Monday immediately preceding the meeting. These comments will be included in the agenda packet for everyone to access and review. This allows the Commission to have time to fully consider input and request follow up if needed prior to the meeting.
- V. ADMINISTRATIVE BUSINESS:
- VI. CONSENT AGENDA: The items on the Consent Agenda are considered by staff to be routine business items. Approval of the items may be made by a single motion, seconded, and a majority vote with no separate discussion of any item listed. Should a member of the Governing Body desire to discuss any item, it will be removed from the Consent Agenda and considered separately.

a) Approval of the minutes of March 23, 2022

- b) Approval of the schedule for the week April 6, 2022
- c) Approval of the check register
- d) Approve and sign the OCB's
- e) Approve agreement with MHS for construction engineering on the E-18 Bridge replacement project
- f) Approve agreement with MHS for construction engineering on the F-46 Bridge replacement project
- g) Approve contract with Dondlinger's for F-46 bridge project.

VII. FORMAL BOARD ACTION:

- a) Consider a motion to approve Resolution 2022-8, amendments to Article 22, special use permits and temporary special use permits.
- b) Consider a motion to approve Resolution 2022-9, reviewing and amending a portion of the Comprehensive Plan.

VIII. PRESENTATIONS AND DISCUSSION ITEMS: presentations are materials of general concern where no action or vote is requested or anticipated.

IX. ADDITIONAL PUBLIC COMMENT IF NEEDED

ADJOURNMENT

LEAVENWORTH COUNTY COMMISSIONERS MEETING SCHEDULE

Monday, March 28, 2022

Tuesday, March 29, 2022

Wednesday, March 30, 2022

9:00 a.m. Leavenworth County Commission meeting
• Commission Meeting Room, 300 Walnut, Leavenworth KS

Thursday, March 31, 2022

Friday, April 1, 2022

ALL SUCH OTHER BUSINESS THAT MAY COME BEFORE THE COMMISSION

ALL MEETINGS ARE OPEN TO THE PUBLIC

COMMENTS SHOULD BE OF GENERAL INTEREST OF THE PUBLIC AND SUBJECT TO THE RULES OF DECORUM

*****March 23, 2022*****

The Board of County Commissioners met in a regular session on Wednesday, March 23, 2022. Commissioner Mike Smith, Commissioner Culbertson, Commissioner Kaaz and Commissioner Doug Smith are present; Commissioner Stieben is present by phone; Also present: Mark Loughry, County Administrator; David Van Parys, Senior County Counselor; Bill Noll, Infrastructure and Construction Services; Jamie VanHouten, Community Corrections Director; Krystal Voth, Planning and Zoning Director; John Richmeier, Leavenworth Times

Residents: Sharon Wagner, John Wagner, Howard Crook, Christy Britz, Shawn Britz, Mason Britz, Madison Britz, Gary Green, AW Himpel, Joe Herring, Greg List, Louis Klemp, John Matthews, Dennis Taylor, Ross Boden, Mike Seck, Pat Barnhardt, John Groves

A motion was made by Commissioner Kaaz and seconded by Commissioner Mike Smith that the Board recess for a closed executive meeting for the discussion of a subject involving the legal interests of the County as justified by K.S.A. 75-4319(B)(2) for consultation with legal counsel for the Board which would be deemed privileged in the attorney-client relationship and that the Board resume open meeting at 9:20 a.m. in the meeting room of the Board. Present in the executive meeting will be Commissioners Jeff Culbertson, Vicky Kaaz, Mike Smith, Doug Smith and Mike Stieben, Senior County Counselor David Van Parys, County Administrator Mark Loughry and Mike Seck.

Motion passed, 5-0.

The Board resumed regular session at 9:20 a.m. Discussion was limited to the legal interests of the County. No decisions were made.

Ross Boden, attorney for Flatlands spoke.

A motion was made by Commissioner Kaaz and seconded by Commissioner Doug Smith that the cease and desist order be held in abeyance for a period for 30 days providing that Flatland operate within the strict confines of the special use permit and that the matter be reviewed in 30 days.

Motion passed, 3-2, Commissioners Culbertson and Stieben voting nay.

A motion was made by Commissioner Kaaz and seconded by Commissioner Mike Smith that the abeyance includes that no friable or nonfriable asbestos be allowed in the c & d landfill.

Motion passed, 4-1, Commissioner Culbertson voting nay.

PUBLIC COMMENT:

Sharon Wagner, Howard Crook and Louis Klemp commented.

ADMINISTRATIVE BUSINESS:

Mark Loughry presented a request for a dumpster for a cleanup for Trinity Lutheran Church.

Commissioner Stieben noted this is at 166th St. and Stillwell where there is still debris in the trees from the tornado.

A motion was made by Commissioner Stieben and seconded by Commissioner Mike Smith to allow the dumpster to be placed per the request at the location of 166th and Stillwell for the church group for the cleanup project.

Motion failed, 3-2 Commissioners Doug Smith, Culbertson and Kaaz voting nay.

A motion was made by Commissioner Doug Smith and seconded by Commissioner Mike Smith to accept the consent agenda for Wednesday, March 23, 2022 as presented.

Motion passed, 5-0.

Pat Barnhardt requested funding from the Leavenworth County/Cities Drug and Alcohol Abuse fund.

A motion was made by Commissioner Kaaz and seconded by Commissioner Doug Smith to approve the allocations to the Leavenworth County and City Drug and Alcohol Abuse Council recommendations.

Motion passed, 5-0.

Bill Noll requested approval of the supplemental for additional design and construction inspection work for the 158th Street road project from MHS.

A motion was made by Commissioner Doug Smith and seconded by Commissioner Mike Smith to approve the supplemental additional design costs for construction inspection work for 158th road improvement by MHS not to exceed \$40,667.92.

Motion passed, 5-0.

Mr. Noll requested to accept bid from Dondlinger's for the F-46 bridge replacement project.

A motion was made by Commissioner Doug Smith and seconded by Commissioner Mike Smith to accept the bid from Dondlinger Construction for bridge F-46 replacement project not to exceed \$710,338.00.

Motion passed, 5-0.

Jamie VanHouten requested that Community Corrections pay plan be moved to the OJA pay plan for FY2023.

A motion was made by Commissioner Kaaz and seconded by Commissioner Mike Smith to approve to move the Community Corrections pay plan from FY2023 pay plan to the OJA pay plan.

Motion passed, 5-0.

Commissioner Mike Smith will be volunteering for the delivery of Meals-on-Wheels this week.

Commissioner Doug Smith delivered Meals-on-Wheels in Basehor yesterday and participated in the MARC meeting. He will attend the Basehor City Council and Fairmount Township meetings.

Commissioner Stieben indicated he is scheduled to deliver Meals-on-Wheels on Friday. He indicated there is a vacancy on the Reno Township Board.

Commissioner Kaaz reported the Commissioners participated in the St. Patrick's Day parade. She participated in the NEK-CAP meeting, Workforce Partnership meeting, delivery of Meals-on-Wheels and the Leavenworth City Commission meeting. She will be participating in the KCATA meeting later today.

A motion was made by Commissioner Kaaz and seconded by Commissioner Mike Smith to adjourn.

Motion passed, 5-0.

The Board adjourned at 10:25 a.m.

LEAVENWORTH COUNTY COMMISSIONERS MEETING SCHEDULE

Monday, April 4, 2022

Tuesday, April 5, 2022

6:00 p.m. Joint Work session with the Leavenworth City Commission
• Riverfront Community Center

Wednesday, April 6, 2022

9:00 a.m. Leavenworth County Commission meeting
• Commission Meeting Room, 300 Walnut, Leavenworth KS

Thursday, April 7, 2022

Friday, April 8, 2022

ALL SUCH OTHER BUSINESS THAT MAY COME BEFORE THE COMMISSION

ALL MEETINGS ARE OPEN TO THE PUBLIC

COMMENTS SHOULD BE OF GENERAL INTEREST OF THE PUBLIC AND SUBJECT TO THE RULES OF DECORUM

START DATE: 03/19/2022 END DATE: 03/25/2022

TYPES OF CHECKS SELECTED: * ALL TYPES

			P.O.NUMBER	CHECK#					
4120	ACE IMAGEWEAR	AAA LAUNDRY & LINEN SUPPLY CO	326796	97701 AP	03/25/2022	2-001-5-53-215	4013-01994 UNIFORM RENTALS	77.71	
4120	ACE IMAGEWEAR	AAA LAUNDRY & LINEN SUPPLY CO	326796	97701 AP	03/25/2022	2-001-5-53-215	4013-01994 UNIFORM RENTALS	77.71	
4120	ACE IMAGEWEAR	AAA LAUNDRY & LINEN SUPPLY CO	326796	97701 AP	03/25/2022	2-001-5-53-215	4013-01994 UNIFORM RENTALS	77.71	
							*** VENDOR	4120 TOTAL	233.13
20588	ADVANTAGE	ADVANTAGE PRINTING	326797	97702 AP	03/25/2022	2-001-5-07-303	132 SHERIFF - BUSINESS CARDS	65.00	
21036	ARROWHEAD	ARROWHEAD SCIENTIFIC INC	326798	97703 AP	03/25/2022	2-001-5-07-251	SHERIFF: EVIDENCE SUPPLIES	335.32	
22369	BAMFORD FI	BAMFORD FIRE SPRINKLER	326799	97704 AP	03/25/2022	2-001-5-32-266	JWO22660 JUSTICE CENTER SPRINK	316.00	
24545	CDW GOVERN	CDW GOVERNMENT INC	326778	97689 AP	03/24/2022	2-001-5-18-301	3773122 HEADSET	255.96	
24545	CDW GOVERN	CDW GOVERNMENT INC	326778	97689 AP	03/24/2022	2-001-5-21-300	3773122 NETOWRK SWITCHES,PROJE	982.65	
24545	CDW GOVERN	CDW GOVERNMENT INC	326778	97689 AP	03/24/2022	2-001-5-21-300	3773122 NETOWRK SWITCHES,PROJE	586.21	
24545	CDW GOVERN	CDW GOVERNMENT INC	326778	97689 AP	03/24/2022	2-001-5-21-300	3773122 NETOWRK SWITCHES,PROJE	640.18	
24545	CDW GOVERN	CDW GOVERNMENT INC	326778	97689 AP	03/24/2022	2-001-5-21-300	3773122 NETOWRK SWITCHES,PROJE	335.92	
							*** VENDOR	24545 TOTAL	2,800.92
648	COMMERCE BANK-COMMER	COMMERCE BANK-COMMERCIAL CARDS	326735	97647 AP	03/24/2022	2-001-5-01-308	MAGNETIC SIGNS FOR VEHICLES	102.65	
648	COMMERCE BANK-COMMER	COMMERCE BANK-COMMERCIAL CARDS	326735	97647 AP	03/24/2022	2-001-5-01-308	MAGNETIC SIGNS FOR VEHICLES	29.99	
648	COMMERCE BANK-COMMER	COMMERCE BANK-COMMERCIAL CARDS	326735	97647 AP	03/24/2022	2-001-5-01-308	MAGNETIC SIGNS FOR VEHICLES	29.99	
648	COMMERCE BANK-COMMER	COMMERCE BANK-COMMERCIAL CARDS	326735	97647 AP	03/24/2022	2-001-5-02-202	AMAZON: CLERK, ELECTION	14.00	
648	COMMERCE BANK-COMMER	COMMERCE BANK-COMMERCIAL CARDS	326735	97647 AP	03/24/2022	2-001-5-02-202	KCCEOA TRAINING - COUNTY CLERK	350.00	
648	COMMERCE BANK-COMMER	COMMERCE BANK-COMMERCIAL CARDS	326735	97647 AP	03/24/2022	2-001-5-02-212	IRON MOUNTAIN SHREDDING (38	32.31	
648	COMMERCE BANK-COMMER	COMMERCE BANK-COMMERCIAL CARDS	326735	97647 AP	03/24/2022	2-001-5-02-301	AMAZON: CLERK, ELECTION	27.58	
648	COMMERCE BANK-COMMER	COMMERCE BANK-COMMERCIAL CARDS	326735	97647 AP	03/24/2022	2-001-5-02-301	CO CLERK - KITCHEN SUPPLIES	176.98	
648	COMMERCE BANK-COMMER	COMMERCE BANK-COMMERCIAL CARDS	326735	97647 AP	03/24/2022	2-001-5-04-211	REG OF DEEDS:TRAVEL, NEWSPAPER	33.28	
648	COMMERCE BANK-COMMER	COMMERCE BANK-COMMERCIAL CARDS	326735	97647 AP	03/24/2022	2-001-5-04-212	REG OF DEEDS:TRAVEL, NEWSPAPER	22.00	
648	COMMERCE BANK-COMMER	COMMERCE BANK-COMMERCIAL CARDS	326735	97647 AP	03/24/2022	2-001-5-05-205	EMS FIELD SUPPLY, UNIFORMS, WAST	8.25	
648	COMMERCE BANK-COMMER	COMMERCE BANK-COMMERCIAL CARDS	326735	97647 AP	03/24/2022	2-001-5-05-210	AT&T FIRSTNET - EMS	262.20	
648	COMMERCE BANK-COMMER	COMMERCE BANK-COMMERCIAL CARDS	326735	97647 AP	03/24/2022	2-001-5-05-213	EMS FIELD SUPPLY, BLDG/VEH MAIN	316.00	
648	COMMERCE BANK-COMMER	COMMERCE BANK-COMMERCIAL CARDS	326735	97647 AP	03/24/2022	2-001-5-05-216	EMS FIELD SUPPLY, UNIFORMS, WAST	163.07	
648	COMMERCE BANK-COMMER	COMMERCE BANK-COMMERCIAL CARDS	326735	97647 AP	03/24/2022	2-001-5-05-280	3-15 MIDWEST MOBILE RADIO	192.00	
648	COMMERCE BANK-COMMER	COMMERCE BANK-COMMERCIAL CARDS	326735	97647 AP	03/24/2022	2-001-5-05-280	3-15 MIDWEST MOBILE RADIO	210.00	
648	COMMERCE BANK-COMMER	COMMERCE BANK-COMMERCIAL CARDS	326735	97647 AP	03/24/2022	2-001-5-05-282	EMS FIELD SUPPLY, UNIFORMS, WAST	346.01	
648	COMMERCE BANK-COMMER	COMMERCE BANK-COMMERCIAL CARDS	326735	97647 AP	03/24/2022	2-001-5-05-301	EMS FIELD SUPPLY, UNIFORMS, WAST	91.87	
648	COMMERCE BANK-COMMER	COMMERCE BANK-COMMERCIAL CARDS	326735	97647 AP	03/24/2022	2-001-5-05-301	EMS FIELD SUPPLY, BLDG/VEH MAIN	58.22	
648	COMMERCE BANK-COMMER	COMMERCE BANK-COMMERCIAL CARDS	326735	97647 AP	03/24/2022	2-001-5-05-306	EMS FIELD SUPPLY, BLDG/VEH MAIN	1,297.53	
648	COMMERCE BANK-COMMER	COMMERCE BANK-COMMERCIAL CARDS	326735	97647 AP	03/24/2022	2-001-5-05-306	EMS FIELD SUPPLY, BLDG/VEH MAIN	45.59	
648	COMMERCE BANK-COMMER	COMMERCE BANK-COMMERCIAL CARDS	326735	97647 AP	03/24/2022	2-001-5-05-306	EMS FIELD SUPPLY, BLDG/VEH MAIN	89.94	
648	COMMERCE BANK-COMMER	COMMERCE BANK-COMMERCIAL CARDS	326735	97647 AP	03/24/2022	2-001-5-05-306	EMS FIELD SUPPLY, BLDG/VEH MAIN	8.99	
648	COMMERCE BANK-COMMER	COMMERCE BANK-COMMERCIAL CARDS	326735	97647 AP	03/24/2022	2-001-5-05-350	EMS FIELD SUPPLY, UNIFORMS, WAST	2,048.67	
648	COMMERCE BANK-COMMER	COMMERCE BANK-COMMERCIAL CARDS	326735	97647 AP	03/24/2022	2-001-5-05-381	EMS FIELD SUPPLY, UNIFORMS, WAST	9,498.46	
648	COMMERCE BANK-COMMER	COMMERCE BANK-COMMERCIAL CARDS	326735	97647 AP	03/24/2022	2-001-5-05-381	EMS FIELD SUPPLY, BLDG/VEH MAIN	269.03	
648	COMMERCE BANK-COMMER	COMMERCE BANK-COMMERCIAL CARDS	326735	97647 AP	03/24/2022	2-001-5-05-381	EMS FIELD SUPPLY, BLDG/VEH MAIN	16.97	
648	COMMERCE BANK-COMMER	COMMERCE BANK-COMMERCIAL CARDS	326735	97647 AP	03/24/2022	2-001-5-05-383	EMS FIELD SUPPLY, BLDG/VEH MAIN	38.27	
648	COMMERCE BANK-COMMER	COMMERCE BANK-COMMERCIAL CARDS	326735	97647 AP	03/24/2022	2-001-5-05-383	EMS FIELD SUPPLY, BLDG/VEH MAIN	174.69	
648	COMMERCE BANK-COMMER	COMMERCE BANK-COMMERCIAL CARDS	326735	97647 AP	03/24/2022	2-001-5-06-216	AT&T MOBILITY PLANNING/ZONING	158.86	
648	COMMERCE BANK-COMMER	COMMERCE BANK-COMMERCIAL CARDS	326735	97647 AP	03/24/2022	2-001-5-06-222	FLEETHOSTER APRIL SERVICE	38.00	
648	COMMERCE BANK-COMMER	COMMERCE BANK-COMMERCIAL CARDS	326735	97647 AP	03/24/2022	2-001-5-06-306	SAFETY, PLANNING AND ZONING	25.11	
648	COMMERCE BANK-COMMER	COMMERCE BANK-COMMERCIAL CARDS	326735	97647 AP	03/24/2022	2-001-5-07-202	LVSO LV, TNG, INMATE HEALTH, TRAN	1,478.00	
648	COMMERCE BANK-COMMER	COMMERCE BANK-COMMERCIAL CARDS	326735	97647 AP	03/24/2022	2-001-5-07-203	LVSO LV, TNG, INMATE HEALTH, TRAN	50.00	
648	COMMERCE BANK-COMMER	COMMERCE BANK-COMMERCIAL CARDS	326735	97647 AP	03/24/2022	2-001-5-07-208	3-15 MIDWEST MOBILE RADIO	700.00	
648	COMMERCE BANK-COMMER	COMMERCE BANK-COMMERCIAL CARDS	326735	97647 AP	03/24/2022	2-001-5-07-208	3-15 MIDWEST MOBILE RADIO	175.00	
648	COMMERCE BANK-COMMER	COMMERCE BANK-COMMERCIAL CARDS	326735	97647 AP	03/24/2022	2-001-5-07-208	3-15 MIDWEST MOBILE RADIO	230.00	
648	COMMERCE BANK-COMMER	COMMERCE BANK-COMMERCIAL CARDS	326735	97647 AP	03/24/2022	2-001-5-07-208	3-15 MIDWEST MOBILE RADIO	535.00	
648	COMMERCE BANK-COMMER	COMMERCE BANK-COMMERCIAL CARDS	326735	97647 AP	03/24/2022	2-001-5-07-210	AT&T SHF 1313	244.73	

START DATE: 03/19/2022 END DATE: 03/25/2022

TYPES OF CHECKS SELECTED: * ALL TYPES

				P.O.NUMBER	CHECK#							
648	COMMERCE BANK-COMMER	COMMERCE BANK-COMMER	COMMERCE BANK-COMMERCIAL CARDS	326735	97647 AP	03/24/2022	2-001-5-07-211	LVSO/EOC VEH MAINT,TVL,COMM OU				9.35
648	COMMERCE BANK-COMMER	COMMERCE BANK-COMMER	COMMERCE BANK-COMMERCIAL CARDS	326735	97647 AP	03/24/2022	2-001-5-07-211	LVSO LV,TNG,INMATE HEALTH,TRAN				1,026.53
648	COMMERCE BANK-COMMER	COMMERCE BANK-COMMER	COMMERCE BANK-COMMERCIAL CARDS	326735	97647 AP	03/24/2022	2-001-5-07-213	LVSO/EOC VEH MAINT,TVL,COMM OU				231.80
648	COMMERCE BANK-COMMER	COMMERCE BANK-COMMER	COMMERCE BANK-COMMERCIAL CARDS	326735	97647 AP	03/24/2022	2-001-5-07-218	LVSO LV,TNG,INMATE HEALTH,TRAN				16.96
648	COMMERCE BANK-COMMER	COMMERCE BANK-COMMER	COMMERCE BANK-COMMERCIAL CARDS	326735	97647 AP	03/24/2022	2-001-5-07-219	LVSO LV,TNG,INMATE HEALTH,TRAN				558.55
648	COMMERCE BANK-COMMER	COMMERCE BANK-COMMER	COMMERCE BANK-COMMERCIAL CARDS	326735	97647 AP	03/24/2022	2-001-5-07-251	LVSO:UNIFORM,EQUIP,TECH,INVEST				204.08
648	COMMERCE BANK-COMMER	COMMERCE BANK-COMMER	COMMERCE BANK-COMMERCIAL CARDS	326735	97647 AP	03/24/2022	2-001-5-07-301	LVSO LV,TNG,INMATE HEALTH,TRAN				23.76
648	COMMERCE BANK-COMMER	COMMERCE BANK-COMMER	COMMERCE BANK-COMMERCIAL CARDS	326735	97647 AP	03/24/2022	2-001-5-07-301	LVSO:UNIFORM,EQUIP,TECH,INVEST				135.34
648	COMMERCE BANK-COMMER	COMMERCE BANK-COMMER	COMMERCE BANK-COMMERCIAL CARDS	326735	97647 AP	03/24/2022	2-001-5-07-302	LVSO LV,TNG,INMATE HEALTH,TRAN				13.65
648	COMMERCE BANK-COMMER	COMMERCE BANK-COMMER	COMMERCE BANK-COMMERCIAL CARDS	326735	97647 AP	03/24/2022	2-001-5-07-302	LVSO LV,TNG,INMATE HEALTH,TRAN				7.38
648	COMMERCE BANK-COMMER	COMMERCE BANK-COMMER	COMMERCE BANK-COMMERCIAL CARDS	326735	97647 AP	03/24/2022	2-001-5-07-350	LVSO LV,TNG,INMATE HEALTH,TRAN				69.30
648	COMMERCE BANK-COMMER	COMMERCE BANK-COMMER	COMMERCE BANK-COMMERCIAL CARDS	326735	97647 AP	03/24/2022	2-001-5-07-350	LVSO:UNIFORM,EQUIP,TECH,INVEST				691.50
648	COMMERCE BANK-COMMER	COMMERCE BANK-COMMER	COMMERCE BANK-COMMERCIAL CARDS	326735	97647 AP	03/24/2022	2-001-5-07-353	LVSO:UNIFORM,EQUIP,TECH,INVEST				639.92
648	COMMERCE BANK-COMMER	COMMERCE BANK-COMMER	COMMERCE BANK-COMMERCIAL CARDS	326735	97647 AP	03/24/2022	2-001-5-07-354	LVSO/EOC VEH MAINT,TVL,COMM OU				16.06
648	COMMERCE BANK-COMMER	COMMERCE BANK-COMMER	COMMERCE BANK-COMMERCIAL CARDS	326735	97647 AP	03/24/2022	2-001-5-07-356	LVSO LV,TNG,INMATE HEALTH,TRAN				71.87
648	COMMERCE BANK-COMMER	COMMERCE BANK-COMMER	COMMERCE BANK-COMMERCIAL CARDS	326735	97647 AP	03/24/2022	2-001-5-07-357	LVSO:UNIFORM,EQUIP,TECH,INVEST				143.18
648	COMMERCE BANK-COMMER	COMMERCE BANK-COMMER	COMMERCE BANK-COMMERCIAL CARDS	326735	97647 AP	03/24/2022	2-001-5-07-359	LVSO LV,TNG,INMATE HEALTH,TRAN				431.21
648	COMMERCE BANK-COMMER	COMMERCE BANK-COMMER	COMMERCE BANK-COMMERCIAL CARDS	326735	97647 AP	03/24/2022	2-001-5-07-362	LVSO LV,TNG,INMATE HEALTH,TRAN				250.14
648	COMMERCE BANK-COMMER	COMMERCE BANK-COMMER	COMMERCE BANK-COMMERCIAL CARDS	326735	97647 AP	03/24/2022	2-001-5-07-362	LVSO:UNIFORM,EQUIP,TECH,INVEST				521.29
648	COMMERCE BANK-COMMER	COMMERCE BANK-COMMER	COMMERCE BANK-COMMERCIAL CARDS	326735	97647 AP	03/24/2022	2-001-5-11-205	KTA - CO ATTY OFFICE				3.50
648	COMMERCE BANK-COMMER	COMMERCE BANK-COMMER	COMMERCE BANK-COMMERCIAL CARDS	326735	97647 AP	03/24/2022	2-001-5-11-213	CO ATTY:THEIS WITNESS COSTS,SU				512.47
648	COMMERCE BANK-COMMER	COMMERCE BANK-COMMER	COMMERCE BANK-COMMERCIAL CARDS	326735	97647 AP	03/24/2022	2-001-5-11-213	CO ATTY:WITNESS LUNCH				8.31
648	COMMERCE BANK-COMMER	COMMERCE BANK-COMMER	COMMERCE BANK-COMMERCIAL CARDS	326735	97647 AP	03/24/2022	2-001-5-11-253	FLEETHOSTER APRIL SERVICE				19.95
648	COMMERCE BANK-COMMER	COMMERCE BANK-COMMER	COMMERCE BANK-COMMERCIAL CARDS	326735	97647 AP	03/24/2022	2-001-5-11-301	CO ATTY:THEIS WITNESS COSTS,SU				1,816.56
648	COMMERCE BANK-COMMER	COMMERCE BANK-COMMER	COMMERCE BANK-COMMERCIAL CARDS	326735	97647 AP	03/24/2022	2-001-5-14-220	BG:CTHSE,JC,SD1,2,3 UTIL,JANIT				281.05
648	COMMERCE BANK-COMMER	COMMERCE BANK-COMMER	COMMERCE BANK-COMMERCIAL CARDS	326735	97647 AP	03/24/2022	2-001-5-14-247	IRON MOUNTAIN SHREDDING (38				29.96
648	COMMERCE BANK-COMMER	COMMERCE BANK-COMMER	COMMERCE BANK-COMMERCIAL CARDS	326735	97647 AP	03/24/2022	2-001-5-14-332	LVSO LV,TNG,INMATE HEALTH,TRAN				77.81
648	COMMERCE BANK-COMMER	COMMERCE BANK-COMMER	COMMERCE BANK-COMMERCIAL CARDS	326735	97647 AP	03/24/2022	2-001-5-14-340	FLEETHOSTER PURCHASE NEW EQUIP				5,125.00
648	COMMERCE BANK-COMMER	COMMERCE BANK-COMMER	COMMERCE BANK-COMMERCIAL CARDS	326735	97647 AP	03/24/2022	2-001-5-18-213	ACCESS FEES FOR ALARMS				1,368.59
648	COMMERCE BANK-COMMER	COMMERCE BANK-COMMER	COMMERCE BANK-COMMERCIAL CARDS	326735	97647 AP	03/24/2022	2-001-5-19-217	CLEMENS- PUBLICATIONS DIST CT				356.65
648	COMMERCE BANK-COMMER	COMMERCE BANK-COMMER	COMMERCE BANK-COMMERCIAL CARDS	326735	97647 AP	03/24/2022	2-001-5-19-220	IRON MOUNTAIN SHREDDING (38				159.20
648	COMMERCE BANK-COMMER	COMMERCE BANK-COMMER	COMMERCE BANK-COMMERCIAL CARDS	326735	97647 AP	03/24/2022	2-001-5-19-301	TEXTING TO JURY SERVICE				100.00
648	COMMERCE BANK-COMMER	COMMERCE BANK-COMMER	COMMERCE BANK-COMMERCIAL CARDS	326735	97647 AP	03/24/2022	2-001-5-19-301	OFFICE SUPPLIES FOR DIST CT				171.22
648	COMMERCE BANK-COMMER	COMMERCE BANK-COMMER	COMMERCE BANK-COMMERCIAL CARDS	326735	97647 AP	03/24/2022	2-001-5-21-300	ELC/HEALTH DEPT FURNITURE,UTIL				4,522.29
648	COMMERCE BANK-COMMER	COMMERCE BANK-COMMER	COMMERCE BANK-COMMERCIAL CARDS	326735	97647 AP	03/24/2022	2-001-5-23-203	COLE:IECD & ICSC DUES				455.00
648	COMMERCE BANK-COMMER	COMMERCE BANK-COMMER	COMMERCE BANK-COMMERCIAL CARDS	326735	97647 AP	03/24/2022	2-001-5-23-203	COLE:IECD & ICSC DUES				125.00
648	COMMERCE BANK-COMMER	COMMERCE BANK-COMMER	COMMERCE BANK-COMMERCIAL CARDS	326735	97647 AP	03/24/2022	2-001-5-28-223	HR:BENEFITS ENROLLMENT LUNCH,				102.22
648	COMMERCE BANK-COMMER	COMMERCE BANK-COMMER	COMMERCE BANK-COMMERCIAL CARDS	326735	97647 AP	03/24/2022	2-001-5-28-301	IRON MOUNTAIN SHREDDING (38				14.98
648	COMMERCE BANK-COMMER	COMMERCE BANK-COMMER	COMMERCE BANK-COMMERCIAL CARDS	326735	97647 AP	03/24/2022	2-001-5-31-230	FLEETHOSTER APRIL SERVICE				59.85
648	COMMERCE BANK-COMMER	COMMERCE BANK-COMMER	COMMERCE BANK-COMMERCIAL CARDS	326735	97647 AP	03/24/2022	2-001-5-31-288	HERKEN:EMS,CTHSE,SHOP,EMS,TOOL				917.14
648	COMMERCE BANK-COMMER	COMMERCE BANK-COMMER	COMMERCE BANK-COMMERCIAL CARDS	326735	97647 AP	03/24/2022	2-001-5-31-297	BG:CTHSE,JC,SD1,2,3 UTIL,JANIT				65.00
648	COMMERCE BANK-COMMER	COMMERCE BANK-COMMER	COMMERCE BANK-COMMERCIAL CARDS	326735	97647 AP	03/24/2022	2-001-5-31-312	BG:CTHSE,JC,SD1,2,3 UTIL,JANIT				1,591.51
648	COMMERCE BANK-COMMER	COMMERCE BANK-COMMER	COMMERCE BANK-COMMERCIAL CARDS	326735	97647 AP	03/24/2022	2-001-5-31-312	HERKEN:EMS,CTHSE,SHOP,EMS,TOOL				150.22
648	COMMERCE BANK-COMMER	COMMERCE BANK-COMMER	COMMERCE BANK-COMMERCIAL CARDS	326735	97647 AP	03/24/2022	2-001-5-31-316	HERKEN:EMS,CTHSE,SHOP,EMS,TOOL				88.45
648	COMMERCE BANK-COMMER	COMMERCE BANK-COMMER	COMMERCE BANK-COMMERCIAL CARDS	326735	97647 AP	03/24/2022	2-001-5-31-317	HERKEN:EMS,CTHSE,SHOP,EMS,TOOL				392.82
648	COMMERCE BANK-COMMER	COMMERCE BANK-COMMER	COMMERCE BANK-COMMERCIAL CARDS	326735	97647 AP	03/24/2022	2-001-5-31-317	TOMLIN:EMS, JC BLDG MAINT				186.74
648	COMMERCE BANK-COMMER	COMMERCE BANK-COMMER	COMMERCE BANK-COMMERCIAL CARDS	326735	97647 AP	03/24/2022	2-001-5-31-320	HERKEN:EMS,CTHSE,SHOP,EMS,TOOL				499.99
648	COMMERCE BANK-COMMER	COMMERCE BANK-COMMER	COMMERCE BANK-COMMERCIAL CARDS	326735	97647 AP	03/24/2022	2-001-5-31-322	HERKEN:EMS,CTHSE,SHOP,EMS,TOOL				39.97
648	COMMERCE BANK-COMMER	COMMERCE BANK-COMMER	COMMERCE BANK-COMMERCIAL CARDS	326735	97647 AP	03/24/2022	2-001-5-31-390	BG:CTHSE,JC,SD1,2,3 UTIL,JANIT				1,034.94
648	COMMERCE BANK-COMMER	COMMERCE BANK-COMMER	COMMERCE BANK-COMMERCIAL CARDS	326735	97647 AP	03/24/2022	2-001-5-32-296	BG:CTHSE,JC,SD1,2,3 UTIL,JANIT				3,469.21
648	COMMERCE BANK-COMMER	COMMERCE BANK-COMMER	COMMERCE BANK-COMMERCIAL CARDS	326735	97647 AP	03/24/2022	2-001-5-32-297	BG:CTHSE,JC,SD1,2,3 UTIL,JANIT				382.74
648	COMMERCE BANK-COMMER	COMMERCE BANK-COMMER	COMMERCE BANK-COMMERCIAL CARDS	326735	97647 AP	03/24/2022	2-001-5-32-391	BG:CTHSE,JC,SD1,2,3 UTIL,JANIT				1,726.67

TYPES OF CHECKS SELECTED: * ALL TYPES

			P.O.NUMBER	CHECK#						
648	COMMERCE BANK-COMMER	COMMERCE BANK-COMMERCIAL CARDS	326735	97647 AP	03/24/2022	2-001-5-32-391	HERKEN:EMS,CTHSE,SHOP,EMS,TOOL		629.44	
648	COMMERCE BANK-COMMER	COMMERCE BANK-COMMERCIAL CARDS	326735	97647 AP	03/24/2022	2-001-5-32-391	TOMLIN:EMS, JC BLDG MAINT		8.98	
648	COMMERCE BANK-COMMER	COMMERCE BANK-COMMERCIAL CARDS	326735	97647 AP	03/24/2022	2-001-5-41-201	MIDWEST OFFICE TECH - COPIES		303.18	
648	COMMERCE BANK-COMMER	COMMERCE BANK-COMMERCIAL CARDS	326735	97647 AP	03/24/2022	2-001-5-41-271	FLEETHOSTER APRIL SERVICE		138.70	
648	COMMERCE BANK-COMMER	COMMERCE BANK-COMMERCIAL CARDS	326735	97647 AP	03/24/2022	2-001-5-42-293	GIS TONER, ESRI CREDITS, CUTTI		200.00	
648	COMMERCE BANK-COMMER	COMMERCE BANK-COMMERCIAL CARDS	326735	97647 AP	03/24/2022	2-001-5-42-301	GIS TONER, ESRI CREDITS, CUTTI		1,059.98	
648	COMMERCE BANK-COMMER	COMMERCE BANK-COMMERCIAL CARDS	326735	97647 AP	03/24/2022	2-001-5-49-301	AMAZON: CLERK, ELECTION		28.98	
648	COMMERCE BANK-COMMER	COMMERCE BANK-COMMERCIAL CARDS	326735	97647 AP	03/24/2022	2-001-5-49-301	AMAZON: CLERK, ELECTION		16.49	
648	COMMERCE BANK-COMMER	COMMERCE BANK-COMMERCIAL CARDS	326735	97647 AP	03/24/2022	2-001-5-49-301	AMAZON: CLERK, ELECTION		16.49	
648	COMMERCE BANK-COMMER	COMMERCE BANK-COMMERCIAL CARDS	326735	97647 AP	03/24/2022	2-001-5-53-202	NW:TRAINING, CHAIN SAW		577.80	
648	COMMERCE BANK-COMMER	COMMERCE BANK-COMMERCIAL CARDS	326735	97647 AP	03/24/2022	2-001-5-53-220	FLEETHOSTER APRIL SERVICE		118.75	
648	COMMERCE BANK-COMMER	COMMERCE BANK-COMMERCIAL CARDS	326735	97647 AP	03/24/2022	2-001-5-53-308	NW:TRAINING, CHAIN SAW		709.99	
648	COMMERCE BANK-COMMER	COMMERCE BANK-COMMERCIAL CARDS	326735	97647 AP	03/24/2022	2-001-5-82-301	SAFETY, PLANNING AND ZONING		148.87	
							*** VENDOR	648 TOTAL		54,403.79
516725	ENTERPRISE (ACH)	ENTERPRISE FM TRUST	326690	25	03/21/2022	2-001-5-06-222	516725A VEHICLE LEASE CHARGES/		266.28	
516725	ENTERPRISE (ACH)	ENTERPRISE FM TRUST	326690	25	03/21/2022	2-001-5-11-253	516725A VEHICLE LEASE CHARGES/		413.25	
516725	ENTERPRISE (ACH)	ENTERPRISE FM TRUST	326690	25	03/21/2022	2-001-5-31-230	516725A VEHICLE LEASE CHARGES/		1,424.64	
516725	ENTERPRISE (ACH)	ENTERPRISE FM TRUST	326690	25	03/21/2022	2-001-5-41-271	516725A VEHICLE LEASE CHARGES/		1,771.33	
516725	ENTERPRISE (ACH)	ENTERPRISE FM TRUST	326690	25	03/21/2022	2-001-5-53-220	516725A VEHICLE LEASE CHARGES/		375.80	
							*** VENDOR	516725 TOTAL		4,251.30
86	EVERGY	EVERGY KANSAS CENTRAL INC	326779	97690 AP	03/24/2022	2-001-5-05-215	ELEC SVC EMS ADMIN		985.78	
86	EVERGY	EVERGY KANSAS CENTRAL INC	326779	97690 AP	03/24/2022	2-001-5-05-215	ELEC SVC EMS 9101		731.28	
							*** VENDOR	86 TOTAL		1,717.06
81	FULLER G	GARY L FULLER ATTY	326800	97705 AP	03/25/2022	2-001-5-09-231	ATTORNEY VOUCHER		825.00	
971	GALLS	GALLS	326801	97706 AP	03/25/2022	2-001-5-07-350	5289255 SHERIFF:UNIFORMS		148.58	
971	GALLS	GALLS	326801	97706 AP	03/25/2022	2-001-5-07-350	5289255 SHERIFF:UNIFORMS		112.00	
971	GALLS	GALLS	326801	97706 AP	03/25/2022	2-001-5-07-350	5289255 SHERIFF:UNIFORMS		245.00	
971	GALLS	GALLS	326801	97706 AP	03/25/2022	2-001-5-07-350	5289255 SHERIFF:UNIFORMS		141.00	
							*** VENDOR	971 TOTAL		646.58
4465	GRONIS	GRONIS HARDWARE INC	326802	97707 AP	03/25/2022	2-001-5-07-359	SHERIFF:JAIL EXPENSE		22.79	
495	IDENTISYS	IDENTISYS INC	326803	97708 AP	03/25/2022	2-001-5-07-362	LC132 SHERIFF: LAMINATE/RIBBON		416.72	
99	JUROR									

warrants by vendor

START DATE: 03/19/2022 END DATE: 03/25/2022

TYPES OF CHECKS SELECTED: * ALL TYPES

0

		P.O.NUMBER	CHECK#							
99	JUROR									
							*** VENDOR	99 TOTAL		1,650.88
394	KANSAS CITY EMERGENC	KANSAS CITY EMERGENCY PHYSICIA	326804	97709 AP	03/25/2022	2-001-5-07-219	INMATE MEDICAL BILL	324.77		
46	KANSAS COR	KANSAS CORRECTIONAL INDUSTRIES	326805	97710 AP	03/25/2022	2-001-5-07-359	1052001 JAIL SUPPLIES	625.00		
1842	KONE INC	KONE INC	326806	97711 AP	03/25/2022	2-001-5-31-220	N40131062 ELEVATOR MAINT FEBRU	129.86		
1842	KONE INC	KONE INC	326806	97711 AP	03/25/2022	2-001-5-32-262	N40131062 ELEVATOR MAINT FEBRU	519.46		
							*** VENDOR	1842 TOTAL		649.32
4755	LEAV PAPER	LEAVENWORTH PAPER AND OFFICE S	326781	97692 AP	03/24/2022	2-001-5-07-301	LEAV CO SHERIFF, JAIL, OFFICE	9.76		
4755	LEAV PAPER	LEAVENWORTH PAPER AND OFFICE S	326781	97692 AP	03/24/2022	2-001-5-07-359	LEAV CO SHERIFF, JAIL, OFFICE	600.00		
4755	LEAV PAPER	LEAVENWORTH PAPER AND OFFICE S	326781	97692 AP	03/24/2022	2-001-5-07-359	LEAV CO SHERIFF, JAIL, OFFICE	600.00		
4755	LEAV PAPER	LEAVENWORTH PAPER AND OFFICE S	326781	97692 AP	03/24/2022	2-001-5-07-359	LEAV CO SHERIFF, JAIL, OFFICE	12.50		

warrants by vendor

TYPES OF CHECKS SELECTED: * ALL TYPES

		P.O.NUMBER	CHECK#							
4755	LEAV PAPER	LEAVENWORTH PAPER AND OFFICE S	326781	97692 AP	03/24/2022	2-001-5-07-360	LEAV CO SHERIFF, JAIL, OFFICE	32.90		
4755	LEAV PAPER	LEAVENWORTH PAPER AND OFFICE S	326781	97692 AP	03/24/2022	2-001-5-07-360	LEAV CO SHERIFF, JAIL, OFFICE	15.16		
								*** VENDOR	4755 TOTAL	1,270.32
2111	LIFTOFF	LIFTOFF,LLC	326807	97712 AP	03/25/2022	2-001-5-18-254	SOFTWARE SUBSCRIPTION	576.00		
17244	MARLOW WHI	MARLOW WHITE UNIFORM CO	326808	97713 AP	03/25/2022	2-001-5-07-350	SHERIFF; UNIFORM ALTERATIONS	14.00		
17197	MIAMI CO A	MIAMI COUNTY ATTORNEY	326809	97714 AP	03/25/2022	2-001-5-19-222	REVIEW MI22CT004 3/10/17	50.00		
2059	MIDWEST OFFICE TECH	MIDWEST OFFICE TECHNOLOGY INC	326782	97693 AP	03/24/2022	2-001-5-01-201	OPK595_K COPIES BOCC	399.64		
2666	MISC REIMBURSEMENTS	JANET KLASINSKI	326810	97715 AP	03/25/2022	2-001-5-02-211	PER DIEM, SANBORN INSTITUTE WI	52.00		
2666	MISC REIMBURSEMENTS	JANET KLASINSKI	326810	97715 AP	03/25/2022	2-001-5-02-211	PER DIEM, SANBORN INSTITUTE WI	15.00		
2666	MISC REIMBURSEMENTS	TERRILOIS MASHBURN	326813	97718 AP	03/25/2022	2-001-5-04-205	REIM MILEAGE -FEBRUARY	54.99		
2666	MISC REIMBURSEMENTS	JEREMY WAGNER	326811	97716 AP	03/25/2022	2-001-5-53-211	PER DIEM WEED DEPT BASIC TRAIN	75.00		
2666	MISC REIMBURSEMENTS	JEREMY WAGNER	326811	97716 AP	03/25/2022	2-001-5-53-211	PER DIEM WEED DEPT BASIC TRAIN	104.00		
2666	MISC REIMBURSEMENTS	JOHN LOGAN	326812	97717 AP	03/25/2022	2-001-5-53-211	PER DIEM - WEED DEPT BASIC TRA	75.00		
2666	MISC REIMBURSEMENTS	JOHN LOGAN	326812	97717 AP	03/25/2022	2-001-5-53-211	PER DIEM - WEED DEPT BASIC TRA	104.00		
								*** VENDOR	2666 TOTAL	479.99
211	NACO	NATIONAL ASSOCIATION OF COUNTI	326814	97719 AP	03/25/2022	2-001-5-18-202	TECHXCHANGE SUB	750.00		
60	NUTRIEN AG SOLUTIONS	NUTRIEN AG SOLUTIONS,INC	326815	97720 AP	03/25/2022	2-001-5-53-305	1692697 CHEMICALS	5,016.00		
3	OTHER COUNTY OFFICE	HENCKEN PROCESS SERVICE, INC	326816	97721 AP	03/25/2022	2-001-5-11-213	REQUEST FOR SERVICE -CRIMINAL	25.44		
3	OTHER COUNTY OFFICE	HENCKEN PROCESS SERVICE, INC	326816	97721 AP	03/25/2022	2-001-5-11-213	REQUEST FOR SERVICE -CRIMINAL	25.44		
								*** VENDOR	3 TOTAL	50.88
480	PROFESSIONAL DEVELOP	PROFESSIONAL DEVELOPMENT ACADE	326784	97695 AP	03/24/2022	2-001-5-07-202	C-13906 NACO HIGH PERF ACADEMY	2,495.00		
480	PROFESSIONAL DEVELOP	PROFESSIONAL DEVELOPMENT ACADE	326784	97695 AP	03/24/2022	2-001-5-07-202	C-13906 NACO HIGH PERF ACADEMY	850.00-		
								*** VENDOR	480 TOTAL	1,645.00
6148	SHERIFF	LEAV CO SHERIFF DEPT	326817	97722 AP	03/25/2022	2-001-5-07-211	MEALS, TRAVEL	55.28		
6148	SHERIFF	LEAV CO SHERIFF DEPT	326817	97722 AP	03/25/2022	2-001-5-07-218	MEALS, TRAVEL	75.53		
6148	SHERIFF	LEAV CO SHERIFF DEPT	326817	97722 AP	03/25/2022	2-001-5-14-332	MEALS, TRAVEL	10.13		
								*** VENDOR	6148 TOTAL	140.94
2537	SOLARWINDS	SOLARWINDS	326818	97723 AP	03/25/2022	2-001-5-18-254	SW21855514 ANNUAL DAMEWARE MAI	370.00		
49	ST LUKES	ST LUKES HOSPITAL	326819	97724 AP	03/25/2022	2-001-5-07-219	INMATE MEDICAL BILL (1/29/	883.72		
306	STREET COP	NJ CRIMINAL INTERDICTION LLC	326820	97725 AP	03/25/2022	2-001-5-07-202	2X TNG:DRUG ID,PARAPHENALIA,MV	450.00		
226	STRYKER	STRYKER SALES CORPORATION	326821	97726 AP	03/25/2022	2-001-5-05-220	EMS 1362043 ANNUAL LP15 (PMT 2	15,390.00		
248	SUMMIT FOOD	ELIOR,INC	326785	97696 AP	03/24/2022	2-001-5-07-261	C741000 INMATE MEALS	5,481.15		
248	SUMMIT FOOD	ELIOR,INC	326785	97696 AP	03/24/2022	2-001-5-07-261	C741000 INMATE MEALS	5,485.82		
248	SUMMIT FOOD	ELIOR,INC	326785	97696 AP	03/24/2022	2-001-5-07-261	C741000 INMATE MEALS	5,346.50		
248	SUMMIT FOOD	ELIOR,INC	326785	97696 AP	03/24/2022	2-001-5-07-261	C741000 INMATE MEALS	5,208.32		
								*** VENDOR	248 TOTAL	21,521.79
1003	SUPERION	CENTRALSQUARE TECHNOLOGIES,LLC	326822	97727 AP	03/25/2022	2-001-5-07-262	GRP 6790,Q-50205 PUBLIC SAFETY	3,900.00		
17676	TANK MANAG	TANK MANAGEMENT SERVICES	326823	97728 AP	03/25/2022	2-001-5-07-404	SPHAG SORB, SOCKS	927.50		
17676	TANK MANAG	TANK MANAGEMENT SERVICES	326823	97728 AP	03/25/2022	2-001-5-07-404	SPHAG SORB, SOCKS	490.00		
								*** VENDOR	17676 TOTAL	1,417.50
575	US POSTAL SERVICE	US POSTAL SERVICE (QUADIENT-PO	326788	97699 AP	03/24/2022	2-001-5-53-301	FEB POTSAGE NOX WEED	1.06		
2007	WIRENUTS	WIRENUTS	326824	97729 AP	03/25/2022	2-001-5-07-207	SVC CALLS - CR DOOR, REPLACE D	110.00		
2007	WIRENUTS	WIRENUTS	326824	97729 AP	03/25/2022	2-001-5-07-207	SVC CALLS - CR DOOR, REPLACE D	425.00		
2007	WIRENUTS	WIRENUTS	326789	97700 AP	03/24/2022	2-001-5-07-363	REPL DVR COURTHOUSE SECURITY	3,379.99		
								*** VENDOR	2007 TOTAL	3,914.99
								TOTAL FUND 001		127,525.41

648	COMMERCE BANK-COMMER	COMMERCE BANK-COMMERCIAL CARDS	326735	97647 AP	03/24/2022	2-108-5-00-211	ELC/HEALTH DEPT FURNITURE,UTIL	31.98	
648	COMMERCE BANK-COMMER	COMMERCE BANK-COMMERCIAL CARDS	326735	97647 AP	03/24/2022	2-108-5-00-219	AT&T MOBILITY - HEALTH DEPT	164.72	
648	COMMERCE BANK-COMMER	COMMERCE BANK-COMMERCIAL CARDS	326735	97647 AP	03/24/2022	2-108-5-00-219	ELC/HEALTH DEPT FURNITURE,UTIL	435.36	
648	COMMERCE BANK-COMMER	COMMERCE BANK-COMMERCIAL CARDS	326735	97647 AP	03/24/2022	2-108-5-00-280	ELC/HEALTH DEPT FURNITURE,UTIL	1,491.26	
648	COMMERCE BANK-COMMER	COMMERCE BANK-COMMERCIAL CARDS	326735	97647 AP	03/24/2022	2-108-5-00-301	ELC/HEALTH DEPT FURNITURE,UTIL	925.16	

TYPES OF CHECKS SELECTED: * ALL TYPES

		P.O.NUMBER	CHECK#							
648	COMMERCE BANK-COMMER	COMMERCE BANK-COMMERCIAL CARDS	326735	97647 AP	03/24/2022	2-108-5-00-380	ELC/HEALTH DEPT FURNITURE,UTIL	1,298.59		
648	COMMERCE BANK-COMMER	COMMERCE BANK-COMMERCIAL CARDS	326735	97647 AP	03/24/2022	2-108-5-00-384	ELC/HEALTH DEPT FURNITURE,UTIL	2,985.32		
648	COMMERCE BANK-COMMER	COMMERCE BANK-COMMERCIAL CARDS	326735	97647 AP	03/24/2022	2-108-5-00-601	3-15 MIDWEST MOBILE RADIO	75.00		
648	COMMERCE BANK-COMMER	COMMERCE BANK-COMMERCIAL CARDS	326735	97647 AP	03/24/2022	2-108-5-00-601	ELC/HEALTH DEPT FURNITURE,UTIL	105.61		
648	COMMERCE BANK-COMMER	COMMERCE BANK-COMMERCIAL CARDS	326735	97647 AP	03/24/2022	2-108-5-00-606	HEALTH DEPT - WIC	711.40		
648	COMMERCE BANK-COMMER	COMMERCE BANK-COMMERCIAL CARDS	326735	97647 AP	03/24/2022	2-108-5-00-606	ELC/HEALTH DEPT FURNITURE,UTIL	429.55		
648	COMMERCE BANK-COMMER	COMMERCE BANK-COMMERCIAL CARDS	326735	97647 AP	03/24/2022	2-108-5-00-610	ELC/HEALTH DEPT FURNITURE,UTIL	550.40		
								*** VENDOR	648 TOTAL	9,204.35
86	EVERGY	EVERGY KANSAS CENTRAL INC	326779	97690 AP	03/24/2022	2-108-5-00-219	ELEC SVC WIC/HEALTH DEPT	739.34		
86	EVERGY	EVERGY KANSAS CENTRAL INC	326779	97690 AP	03/24/2022	2-108-5-00-606	ELEC SVC WIC/HEALTH DEPT	246.44		
								*** VENDOR	86 TOTAL	985.78
								TOTAL FUND 108		10,190.13

24545	CDW GOVERN	CDW GOVERNMENT INC	326778	97689 AP	03/24/2022	2-115-5-00-409	3773122 CAT6A CABLE	1,784.94		
24545	CDW GOVERN	CDW GOVERNMENT INC	326778	97689 AP	03/24/2022	2-115-5-00-409	3773122 PRINTER,WALLMOUNT CABI	1,090.62		
24545	CDW GOVERN	CDW GOVERNMENT INC	326778	97689 AP	03/24/2022	2-115-5-00-409	3773122 PRINTER,WALLMOUNT CABI	278.60		
								*** VENDOR	24545 TOTAL	3,154.16
3257	FEDERAL SIGNAL	FEDERAL SIGNAL CORPORATION	326825	97730 AP	03/25/2022	2-115-5-00-408	SIREN (178TH ST)	6,624.97		
3257	FEDERAL SIGNAL	FEDERAL SIGNAL CORPORATION	326825	97730 AP	03/25/2022	2-115-5-00-408	SIREN (178TH ST)	1,799.38		
								*** VENDOR	3257 TOTAL	8,424.35
								TOTAL FUND 115		11,578.51

318	NEXTONER	NEXTONER LLC	326826	97731 AP	03/25/2022	2-117-5-00-301	LEAV CO CLERK'S OFFICE TONER	150.00		
								TOTAL FUND 117		150.00

24545	CDW GOVERN	CDW GOVERNMENT INC	326778	97689 AP	03/24/2022	2-118-5-00-405	3773122 DELL MONITOR, CABLE, D	170.34		
24545	CDW GOVERN	CDW GOVERNMENT INC	326778	97689 AP	03/24/2022	2-118-5-00-405	3773122 DELL MONITOR, CABLE, D	83.11		
24545	CDW GOVERN	CDW GOVERNMENT INC	326778	97689 AP	03/24/2022	2-118-5-00-405	3773122 REPAIR PARTS - CO TREA	341.20		
								*** VENDOR	24545 TOTAL	594.65
								TOTAL FUND 118		594.65

24545	CDW GOVERN	CDW GOVERNMENT INC	326778	97689 AP	03/24/2022	2-123-5-00-301	3773122 SOFTWARE, LAPTOP	304.99		
24545	CDW GOVERN	CDW GOVERNMENT INC	326778	97689 AP	03/24/2022	2-123-5-00-301	3773122 SOFTWARE, LAPTOP	698.22		
								*** VENDOR	24545 TOTAL	1,003.21
								TOTAL FUND 123		1,003.21

648	COMMERCE BANK-COMMER	COMMERCE BANK-COMMERCIAL CARDS	326735	97647 AP	03/24/2022	2-126-5-00-210	COMM CORR - VERIZON,ADVISORY B	40.01		
648	COMMERCE BANK-COMMER	COMMERCE BANK-COMMERCIAL CARDS	326735	97647 AP	03/24/2022	2-126-5-00-221	FLEETHOSTER APRIL SERVICE	9.97		
648	COMMERCE BANK-COMMER	COMMERCE BANK-COMMERCIAL CARDS	326735	97647 AP	03/24/2022	2-126-5-00-225	IRON MOUNTAIN SHREDDING (38	14.98		
648	COMMERCE BANK-COMMER	COMMERCE BANK-COMMERCIAL CARDS	326735	97647 AP	03/24/2022	2-126-5-00-321	COMM CORR - JUV/ADT OFFICE SUP	29.19		
								*** VENDOR	648 TOTAL	94.15
516725	ENTERPRISE (ACH)	ENTERPRISE FM TRUST	326690	25	03/21/2022	2-126-5-00-221	516725A VEHICLE LEASE CHARGES/	14.77		
								TOTAL FUND 126		108.92

24545	CDW GOVERN	CDW GOVERNMENT INC	326778	97689 AP	03/24/2022	2-127-5-00-3	3773122 LAPTOP (2) (WERE BACKO	1,396.44		
648	COMMERCE BANK-COMMER	COMMERCE BANK-COMMERCIAL CARDS	326735	97647 AP	03/24/2022	2-127-5-00-3	COMM CORR - INCENTIVES	80.00		
648	COMMERCE BANK-COMMER	COMMERCE BANK-COMMERCIAL CARDS	326735	97647 AP	03/24/2022	2-127-5-00-3	COMM CORR - VERIZON,ADVISORY B	96.70		
								*** VENDOR	648 TOTAL	176.70
								TOTAL FUND 127		1,573.14

4120	ACE IMAGEWEAR	AAA LAUNDRY & LINEN SUPPLY CO	326777	97688 AP	03/24/2022	2-133-5-00-215	3-27 4013-01993 UNIFORM RENTAL	280.19		
4120	ACE IMAGEWEAR	AAA LAUNDRY & LINEN SUPPLY CO	326777	97688 AP	03/24/2022	2-133-5-00-215	3-27 4013-01993 UNIFORM RENTAL	261.40		

START DATE: 03/19/2022 END DATE: 03/25/2022

TYPES OF CHECKS SELECTED: * ALL TYPES

			P.O.NUMBER	CHECK#						
4120	ACE IMAGEWEAR	AAA LAUNDRY & LINEN SUPPLY CO	326777	97688 AP	03/24/2022	2-133-5-00-215	3-27	4013-01993 UNIFORM RENTAL	251.59	
4120	ACE IMAGEWEAR	AAA LAUNDRY & LINEN SUPPLY CO	326777	97688 AP	03/24/2022	2-133-5-00-312	3-27	4013-01993 UNIFORM RENTAL	216.89	
4120	ACE IMAGEWEAR	AAA LAUNDRY & LINEN SUPPLY CO	326777	97688 AP	03/24/2022	2-133-5-00-312	3-27	4013-01993 UNIFORM RENTAL	207.80	
4120	ACE IMAGEWEAR	AAA LAUNDRY & LINEN SUPPLY CO	326777	97688 AP	03/24/2022	2-133-5-00-312	3-27	4013-01993 UNIFORM RENTAL	206.31	
								*** VENDOR	4120 TOTAL	1,424.18
2777	ALFRED BENESCH & CO	ALFRED BENESCH & CO	326827	97732 AP	03/25/2022	2-133-5-00-213	3-24	00130521.00 SH-30 100%	646.76	
2777	ALFRED BENESCH & CO	ALFRED BENESCH & CO	326827	97732 AP	03/25/2022	2-133-5-00-213	3-24	00130521.00 SH-30 100%	889.31	
								*** VENDOR	2777 TOTAL	1,536.07
5345	B & D RADI	B & D RADIATOR	326828	97733 AP	03/25/2022	2-133-5-00-360	3-28	FREIGHTLINER RADIATOR	1,335.00	
4136	BRANDT FAB	BRANDT FABRICATING	326829	97734 AP	03/25/2022	2-133-5-00-360	3-30	FABRICATE 2 ROLLERS	2,800.00	
117	BUILDEX, LLC	HAMM INC (FORMERLY BUILDEX)	326830	97735 AP	03/25/2022	2-133-5-00-303	3-23	430742 ROAD SEAL (LESS PR	207,402.00-	
117	BUILDEX, LLC	HAMM INC (FORMERLY BUILDEX)	326830	97735 AP	03/25/2022	2-133-5-00-303	3-23	430742 ROAD SEAL (LESS PR	12,359.03	
117	BUILDEX, LLC	HAMM INC (FORMERLY BUILDEX)	326830	97735 AP	03/25/2022	2-133-5-00-303	3-23	430742 ROAD SEAL (LESS PR	781.75	
117	BUILDEX, LLC	HAMM INC (FORMERLY BUILDEX)	326830	97735 AP	03/25/2022	2-133-5-00-303	3-23	430742 ROAD SEAL (LESS PR	35,088.16	
117	BUILDEX, LLC	HAMM INC (FORMERLY BUILDEX)	326830	97735 AP	03/25/2022	2-133-5-00-303	3-23	430742 ROAD SEAL (LESS PR	1,563.49	
117	BUILDEX, LLC	HAMM INC (FORMERLY BUILDEX)	326830	97735 AP	03/25/2022	2-133-5-00-303	3-23	430742 ROAD SEAL (LESS PR	21,548.52	
117	BUILDEX, LLC	HAMM INC (FORMERLY BUILDEX)	326830	97735 AP	03/25/2022	2-133-5-00-303	3-23	430742 ROAD SEAL (LESS PR	43,123.66	
117	BUILDEX, LLC	HAMM INC (FORMERLY BUILDEX)	326830	97735 AP	03/25/2022	2-133-5-00-303	3-23	430742 ROAD SEAL (LESS PR	4,610.70	
117	BUILDEX, LLC	HAMM INC (FORMERLY BUILDEX)	326830	97735 AP	03/25/2022	2-133-5-00-303	3-23	430742 ROAD SEAL (LESS PR	7,477.12	
117	BUILDEX, LLC	HAMM INC (FORMERLY BUILDEX)	326830	97735 AP	03/25/2022	2-133-5-00-303	3-23	430742 ROAD SEAL (LESS PR	65,310.37	
117	BUILDEX, LLC	HAMM INC (FORMERLY BUILDEX)	326830	97735 AP	03/25/2022	2-133-5-00-303	3-23	430742 ROAD SEAL (LESS PR	2,962.13	
117	BUILDEX, LLC	HAMM INC (FORMERLY BUILDEX)	326830	97735 AP	03/25/2022	2-133-5-00-303	3-23	430742 ROAD SEAL (LESS PR	6,876.18	
117	BUILDEX, LLC	HAMM INC (FORMERLY BUILDEX)	326830	97735 AP	03/25/2022	2-133-5-00-303	3-23	430742 ROAD SEAL (LESS PR	12,518.58	
								*** VENDOR	117 TOTAL	6,817.69
648	COMMERCE BANK-COMMER	COMMERCE BANK-COMMERCIAL CARDS	326735	97647 AP	03/24/2022	2-133-5-00-201	3-25	PARTS, TIRES,TVL,SIGNS,SU	1,600.00	
648	COMMERCE BANK-COMMER	COMMERCE BANK-COMMERCIAL CARDS	326735	97647 AP	03/24/2022	2-133-5-00-203	3-25	PARTS, TIRES,TVL,SIGNS,SU	46.75	
648	COMMERCE BANK-COMMER	COMMERCE BANK-COMMERCIAL CARDS	326735	97647 AP	03/24/2022	2-133-5-00-207	3-15	MIDWEST MOBILE RADIO	375.00	
648	COMMERCE BANK-COMMER	COMMERCE BANK-COMMERCIAL CARDS	326735	97647 AP	03/24/2022	2-133-5-00-207	3-15	MIDWEST MOBILE RADIO	10.00	
648	COMMERCE BANK-COMMER	COMMERCE BANK-COMMERCIAL CARDS	326735	97647 AP	03/24/2022	2-133-5-00-207	3-15	MIDWEST MOBILE RADIO	10.00	
648	COMMERCE BANK-COMMER	COMMERCE BANK-COMMERCIAL CARDS	326735	97647 AP	03/24/2022	2-133-5-00-210	3-2	AT&T MOBILITY DATA, IPHONE	244.60	
648	COMMERCE BANK-COMMER	COMMERCE BANK-COMMERCIAL CARDS	326735	97647 AP	03/24/2022	2-133-5-00-210	3-2	AT&T MOBILITY DATA, IPHONE	105.43	
648	COMMERCE BANK-COMMER	COMMERCE BANK-COMMERCIAL CARDS	326735	97647 AP	03/24/2022	2-133-5-00-214	3-26	PW TIRES,ASPHALT,TOOLS,OF	38.97	
648	COMMERCE BANK-COMMER	COMMERCE BANK-COMMERCIAL CARDS	326735	97647 AP	03/24/2022	2-133-5-00-214	3-25	PARTS, TIRES,TVL,SIGNS,SU	218.03	
648	COMMERCE BANK-COMMER	COMMERCE BANK-COMMERCIAL CARDS	326735	97647 AP	03/24/2022	2-133-5-00-301	3-26	PW TIRES,ASPHALT,TOOLS,OF	652.73	
648	COMMERCE BANK-COMMER	COMMERCE BANK-COMMERCIAL CARDS	326735	97647 AP	03/24/2022	2-133-5-00-301	3-25	PARTS, TIRES,TVL,SIGNS,SU	177.75	
648	COMMERCE BANK-COMMER	COMMERCE BANK-COMMERCIAL CARDS	326735	97647 AP	03/24/2022	2-133-5-00-309	3-26	PW TIRES,ASPHALT,TOOLS,OF	1,553.72	
648	COMMERCE BANK-COMMER	COMMERCE BANK-COMMERCIAL CARDS	326735	97647 AP	03/24/2022	2-133-5-00-309	3-25	PARTS, TIRES,TVL,SIGNS,SU	1,027.74	
648	COMMERCE BANK-COMMER	COMMERCE BANK-COMMERCIAL CARDS	326735	97647 AP	03/24/2022	2-133-5-00-311	3-26	PW TIRES,ASPHALT,TOOLS,OF	155.07	
648	COMMERCE BANK-COMMER	COMMERCE BANK-COMMERCIAL CARDS	326735	97647 AP	03/24/2022	2-133-5-00-312	3-25	PARTS, TIRES,TVL,SIGNS,SU	74.32	
648	COMMERCE BANK-COMMER	COMMERCE BANK-COMMERCIAL CARDS	326735	97647 AP	03/24/2022	2-133-5-00-315	3-26	PW TIRES,ASPHALT,TOOLS,OF	173.84	
648	COMMERCE BANK-COMMER	COMMERCE BANK-COMMERCIAL CARDS	326735	97647 AP	03/24/2022	2-133-5-00-326	3-26	PW TIRES,ASPHALT,TOOLS,OF	448.97	
648	COMMERCE BANK-COMMER	COMMERCE BANK-COMMERCIAL CARDS	326735	97647 AP	03/24/2022	2-133-5-00-360	3-26	PW TIRES,ASPHALT,TOOLS,OF	2,160.54	
648	COMMERCE BANK-COMMER	COMMERCE BANK-COMMERCIAL CARDS	326735	97647 AP	03/24/2022	2-133-5-00-360	3-26	PW TIRES,ASPHALT,TOOLS,OF	5.58	
648	COMMERCE BANK-COMMER	COMMERCE BANK-COMMERCIAL CARDS	326735	97647 AP	03/24/2022	2-133-5-00-360	3-25	PARTS, TIRES,TVL,SIGNS,SU	2,267.78	
648	COMMERCE BANK-COMMER	COMMERCE BANK-COMMERCIAL CARDS	326735	97647 AP	03/24/2022	2-133-5-00-362	3-26	PW TIRES,ASPHALT,TOOLS,OF	880.74	
648	COMMERCE BANK-COMMER	COMMERCE BANK-COMMERCIAL CARDS	326735	97647 AP	03/24/2022	2-133-5-00-363	3-26	PW TIRES,ASPHALT,TOOLS,OF	456.24	
648	COMMERCE BANK-COMMER	COMMERCE BANK-COMMERCIAL CARDS	326735	97647 AP	03/24/2022	2-133-5-00-363	3-25	PARTS, TIRES,TVL,SIGNS,SU	64.46	
648	COMMERCE BANK-COMMER	COMMERCE BANK-COMMERCIAL CARDS	326735	97647 AP	03/24/2022	2-133-5-00-363	3-25	PARTS, TIRES,TVL,SIGNS,SU	229.96	
648	COMMERCE BANK-COMMER	COMMERCE BANK-COMMERCIAL CARDS	326735	97647 AP	03/24/2022	2-133-5-00-364	3-26	PW TIRES,ASPHALT,TOOLS,OF	804.86	
648	COMMERCE BANK-COMMER	COMMERCE BANK-COMMERCIAL CARDS	326735	97647 AP	03/24/2022	2-133-5-00-365	3-26	PW TIRES,ASPHALT,TOOLS,OF	803.16	
648	COMMERCE BANK-COMMER	COMMERCE BANK-COMMERCIAL CARDS	326735	97647 AP	03/24/2022	2-133-5-00-440	3-26	PW TIRES,ASPHALT,TOOLS,OF	1,270.20	
648	COMMERCE BANK-COMMER	COMMERCE BANK-COMMERCIAL CARDS	326735	97647 AP	03/24/2022	2-133-5-00-440	3-26	PW TIRES,ASPHALT,TOOLS,OF	247.68	

START DATE: 03/19/2022 END DATE: 03/25/2022

TYPES OF CHECKS SELECTED: * ALL TYPES

			P.O.NUMBER	CHECK#						
648	COMMERCE BANK-COMMER	COMMERCE BANK-COMMERCIAL CARDS	326735	97647 AP	03/24/2022	2-133-5-00-440	3-25 PARTS, TIRES,TVL,SIGNS,SU	104.87		
							*** VENDOR		648 TOTAL	16,208.99
86	EVERGY	EVERGY KANSAS CENTRAL INC	326779	97690 AP	03/24/2022	2-133-5-00-251	3-44 ELEC SVC CO SHOP ET AL	1,056.84		
86	EVERGY	EVERGY KANSAS CENTRAL INC	326779	97690 AP	03/24/2022	2-133-5-00-251	3-44 ELEC SVC CO SHOP ET AL	561.32		
86	EVERGY	EVERGY KANSAS CENTRAL INC	326779	97690 AP	03/24/2022	2-133-5-00-251	3-44 ELEC SVC CO SHOP ET AL	24.06		
86	EVERGY	EVERGY KANSAS CENTRAL INC	326779	97690 AP	03/24/2022	2-133-5-00-251	3-44 ELEC SVC CO SHOP ET AL	349.08		
							*** VENDOR		86 TOTAL	1,991.30
1508	EVERY-CLAIMS	EVERGY	326831	97736 AP	03/25/2022	2-133-5-00-251	3-31 DAMAGE TO POWER LINE 2436	3,677.12		
434	HAMM QUARR	HAMM QUARRIES	326780	97691 AP	03/24/2022	2-133-5-00-361	3-32 300467 ROCK	744.35		
434	HAMM QUARR	HAMM QUARRIES	326780	97691 AP	03/24/2022	2-133-5-00-361	3-32 300467 ROCK	1,094.74		
434	HAMM QUARR	HAMM QUARRIES	326780	97691 AP	03/24/2022	2-133-5-00-361	3-32 300467 ROCK	258.12		
434	HAMM QUARR	HAMM QUARRIES	326780	97691 AP	03/24/2022	2-133-5-00-361	3-32 300467 ROCK	987.89		
434	HAMM QUARR	HAMM QUARRIES	326780	97691 AP	03/24/2022	2-133-5-00-361	3-32 300467 ROCK	1,406.79		
434	HAMM QUARR	HAMM QUARRIES	326780	97691 AP	03/24/2022	2-133-5-00-361	3-32 300467 ROCK	988.49		
							*** VENDOR		434 TOTAL	5,480.38
369	HOLLIDAY	HOLLIDAY SAND & GRAVEL CO	326832	97737 AP	03/25/2022	2-133-5-00-306	3-33 218331 IC SAND, ROCK	4,862.83		
369	HOLLIDAY	HOLLIDAY SAND & GRAVEL CO	326832	97737 AP	03/25/2022	2-133-5-00-361	3-33 218331 IC SAND, ROCK	303.40		
							*** VENDOR		369 TOTAL	5,166.23
191	HOME DEPOT	HOME DEPOT USA	326833	97738 AP	03/25/2022	2-133-5-00-440	3-40 1111680 PAINT FOR SPREADE	382.50		
368	INDEPENDEN	INDEPENDENT SALT CO	326834	97739 AP	03/25/2022	2-133-5-00-306	3-34 2KSLEAV ICE CONTROL SALT	4,684.27		
368	INDEPENDEN	INDEPENDENT SALT CO	326834	97739 AP	03/25/2022	2-133-5-00-306	3-34 2KSLEAV ICE CONTROL SALT	8,810.20		
							*** VENDOR		368 TOTAL	13,494.47
979	JAMAR TECHNOLOGIES	JAMAR TECHNOLOGIES INC	326835	97740 AP	03/25/2022	2-133-5-00-301	3-22 13641 TRAFFIC COUNTER AND	1,895.00		
979	JAMAR TECHNOLOGIES	JAMAR TECHNOLOGIES INC	326835	97740 AP	03/25/2022	2-133-5-00-301	3-22 13641 TRAFFIC COUNTER AND	2,694.93		
							*** VENDOR		979 TOTAL	4,589.93
3197	KLM	LEAGUE OF KS MUNICIPALITIES	326836	97741 AP	03/25/2022	2-133-5-00-208	3-41 PROJECT ENGINEER JOB POST	100.00		
7258	L & R REFR	L & R REFRIGERATION SERVICE CO	326837	97742 AP	03/25/2022	2-133-5-00-207	3-35 LVCO SHOP SVC CALL/DIAGNO	119.00		
2666	MISC REIMBURSEMENTS	COLBY ROCKERS	326838	97743 AP	03/25/2022	2-133-5-00-201	3-50 PER DIEM TRAINING IN OREG	78.00		
2666	MISC REIMBURSEMENTS	COLBY ROCKERS	326838	97743 AP	03/25/2022	2-133-5-00-201	3-50 PER DIEM TRAINING IN OREG	15.00		
2666	MISC REIMBURSEMENTS	DAN KOCH	326839	97744 AP	03/25/2022	2-133-5-00-201	3-51 PER DIEM TRAINING - OREGO	78.00		
2666	MISC REIMBURSEMENTS	DAN KOCH	326839	97744 AP	03/25/2022	2-133-5-00-201	3-51 PER DIEM TRAINING - OREGO	15.00		
2666	MISC REIMBURSEMENTS	GARY HEIM	326840	97745 AP	03/25/2022	2-133-5-00-201	3-46 PER DIEM TRAINING IN OREG	78.00		
2666	MISC REIMBURSEMENTS	GARY HEIM	326840	97745 AP	03/25/2022	2-133-5-00-201	3-46 PER DIEM TRAINING IN OREG	15.00		
2666	MISC REIMBURSEMENTS	JEFF LEE	326841	97746 AP	03/25/2022	2-133-5-00-201	3-49 PER DIEM FOR TRAINING IN	78.00		
2666	MISC REIMBURSEMENTS	JEFF LEE	326841	97746 AP	03/25/2022	2-133-5-00-201	3-49 PER DIEM FOR TRAINING IN	15.00		
2666	MISC REIMBURSEMENTS	MIKE REYNOLDS	326842	97747 AP	03/25/2022	2-133-5-00-201	3-52 PER DIEM, TRAINING IN ORE	78.00		
2666	MISC REIMBURSEMENTS	MIKE REYNOLDS	326842	97747 AP	03/25/2022	2-133-5-00-201	3-52 PER DIEM, TRAINING IN ORE	15.00		
2666	MISC REIMBURSEMENTS	SAM MORTON	326843	97748 AP	03/25/2022	2-133-5-00-201	3-47 PER DIEM, TRAINING IN ORE	78.00		
2666	MISC REIMBURSEMENTS	SAM MORTON	326843	97748 AP	03/25/2022	2-133-5-00-201	3-47 PER DIEM, TRAINING IN ORE	15.00		
2666	MISC REIMBURSEMENTS	VINCENT GRIER	326845	97750 AP	03/25/2022	2-133-5-00-201	3-45 PER DIEM, TRAINING IN ORE	78.00		
2666	MISC REIMBURSEMENTS	VINCENT GRIER	326845	97750 AP	03/25/2022	2-133-5-00-201	3-45 PER DIEM, TRAINING IN ORE	15.00		
2666	MISC REIMBURSEMENTS	ZACH EVANS	326846	97751 AP	03/25/2022	2-133-5-00-201	3-48 PER DIEM, TRAINING IN ORE	78.00		
2666	MISC REIMBURSEMENTS	ZACH EVANS	326846	97751 AP	03/25/2022	2-133-5-00-201	3-48 PER DIEM, TRAINING IN ORE	15.00		
2666	MISC REIMBURSEMENTS	SHAWN BAUSWELL	326844	97749 AP	03/25/2022	2-133-5-00-203	3-29 REIM CDL LICENSE	36.75		
							*** VENDOR		2666 TOTAL	780.75
8028	MURPHY TRA	MURPHY TRACTOR & EQUIP CO	326847	97752 AP	03/25/2022	2-133-5-00-360	3-37 88002-36463 PM AGREEMENT,	15.00		
8028	MURPHY TRA	MURPHY TRACTOR & EQUIP CO	326847	97752 AP	03/25/2022	2-133-5-00-360	3-37 88002-36463 PM AGREEMENT,	15.00		
							*** VENDOR		8028 TOTAL	30.00
1123	POMPMIDWEST	POMP'S TIRE SERVICE INC	326848	97753 AP	03/25/2022	2-133-5-00-309	3-36 1960724 TIRES	222.50		
418	PREMIER TRUCK	PENSKE COMMERCIAL VEHICLES US	326849	97754 AP	03/25/2022	2-133-5-00-360	3-38 8052255000 SWITCHES, VALV	86.10		
418	PREMIER TRUCK	PENSKE COMMERCIAL VEHICLES US	326849	97754 AP	03/25/2022	2-133-5-00-360	3-38 8052255000 SWITCHES, VALV	62.48		
418	PREMIER TRUCK	PENSKE COMMERCIAL VEHICLES US	326849	97754 AP	03/25/2022	2-133-5-00-360	3-38 8052255000 SWITCHES, VALV	.00		

TYPES OF CHECKS SELECTED: * ALL TYPES

		P.O.NUMBER	CHECK#						*** VENDOR	418 TOTAL	148.58
113	SUMNERONE INC	SUMNERONE INC	326850	97755 AP	03/25/2022	2-133-5-00-301	3-39 50ULCO8 COPIER	38.07			
575	US POSTAL SERVICE	US POSTAL SERVICE (QUADIENT-PO	326788	97699 AP	03/24/2022	2-133-5-00-301	3-42 FEB POSTAGE PUBLIC WORKS	55.78			
2007	WIRENUTS	WIRENUTS	326851	97756 AP	03/25/2022	2-133-5-00-207	3-43 SVC CALL -REPAIR GATE	110.00			
									TOTAL FUND 133	66,508.54	
1702	LEAV CO CI	LEAV CO-CITIES ALCOHOL	326775	97687 AP	03/24/2022	2-134-5-00-2	ALCOHOL EDUCATION PROGRAMS	3,500.00			
1702	LEAV CO CI	LEAV CO-CITIES ALCOHOL	326775	97687 AP	03/24/2022	2-134-5-00-2	ALCOHOL EDUCATION PROGRAMS	2,000.00			
1702	LEAV CO CI	LEAV CO-CITIES ALCOHOL	326775	97687 AP	03/24/2022	2-134-5-00-2	ALCOHOL EDUCATION PROGRAMS	1,500.00			
1702	LEAV CO CI	LEAV CO-CITIES ALCOHOL	326775	97687 AP	03/24/2022	2-134-5-00-2	ALCOHOL EDUCATION PROGRAMS	6,000.00			
1702	LEAV CO CI	LEAV CO-CITIES ALCOHOL	326775	97687 AP	03/24/2022	2-134-5-00-2	ALCOHOL EDUCATION PROGRAMS	3,888.00			
1702	LEAV CO CI	LEAV CO-CITIES ALCOHOL	326775	97687 AP	03/24/2022	2-134-5-00-2	ALCOHOL EDUCATION PROGRAMS	6,000.00			
1702	LEAV CO CI	LEAV CO-CITIES ALCOHOL	326775	97687 AP	03/24/2022	2-134-5-00-2	ALCOHOL EDUCATION PROGRAMS	3,000.00			
1702	LEAV CO CI	LEAV CO-CITIES ALCOHOL	326775	97687 AP	03/24/2022	2-134-5-00-2	ALCOHOL EDUCATION PROGRAMS	1,500.00			
1702	LEAV CO CI	LEAV CO-CITIES ALCOHOL	326775	97687 AP	03/24/2022	2-134-5-00-2	ALCOHOL EDUCATION PROGRAMS	6,000.00			
									*** VENDOR	1702 TOTAL	33,388.00
									TOTAL FUND 134	33,388.00	
648	COMMERCE BANK-COMMER	COMMERCE BANK-COMMERCIAL CARDS	326735	97647 AP	03/24/2022	2-136-5-00-203	IRON MOUNTAIN SHREDDING (38	7.49			
648	COMMERCE BANK-COMMER	COMMERCE BANK-COMMERCIAL CARDS	326735	97647 AP	03/24/2022	2-136-5-00-206	COMM CORR - VERIZON,ADVISORY B	40.01			
648	COMMERCE BANK-COMMER	COMMERCE BANK-COMMERCIAL CARDS	326735	97647 AP	03/24/2022	2-136-5-00-221	FLEETHOSTER APRIL SERVICE	9.98			
648	COMMERCE BANK-COMMER	COMMERCE BANK-COMMERCIAL CARDS	326735	97647 AP	03/24/2022	2-136-5-00-223	IRON MOUNTAIN SHREDDING (38	7.49			
648	COMMERCE BANK-COMMER	COMMERCE BANK-COMMERCIAL CARDS	326735	97647 AP	03/24/2022	2-136-5-00-237	COMM CORR JCAB	71.65			
648	COMMERCE BANK-COMMER	COMMERCE BANK-COMMERCIAL CARDS	326735	97647 AP	03/24/2022	2-136-5-00-3	COMM CORR - INCENTIVES	80.00			
648	COMMERCE BANK-COMMER	COMMERCE BANK-COMMERCIAL CARDS	326735	97647 AP	03/24/2022	2-136-5-00-3	ADVISORY BOARD (COMM CORR)	101.98			
648	COMMERCE BANK-COMMER	COMMERCE BANK-COMMERCIAL CARDS	326735	97647 AP	03/24/2022	2-136-5-00-3	COMM CORR - VERIZON,ADVISORY B	42.96			
648	COMMERCE BANK-COMMER	COMMERCE BANK-COMMERCIAL CARDS	326735	97647 AP	03/24/2022	2-136-5-00-321	COMM CORR - JUV/ADT OFFICE SUP	29.19			
									*** VENDOR	648 TOTAL	390.75
516725	ENTERPRISE (ACH)	ENTERPRISE FM TRUST	326690	25	03/21/2022	2-136-5-00-221	516725A VEHICLE LEASE CHARGES/	14.77			
203	GREENFEATHER	DANNY SLUSSER AND TERRI RICKET	326852	97757 AP	03/25/2022	2-136-5-00-203	GPS MONITORING - COLON	483.50			
203	GREENFEATHER	DANNY SLUSSER AND TERRI RICKET	326852	97757 AP	03/25/2022	2-136-5-00-223	GPS MONITORING - COLON	483.50			
									*** VENDOR	203 TOTAL	967.00
7098	QUILL CORP	QUILL CORP	326853	97758 AP	03/25/2022	2-136-5-00-238	5645204 OFFICE SUPPLIES (JCAB)	23.98			
									TOTAL FUND 136	1,396.50	
4120	ACE IMAGEWEAR	AAA LAUNDRY & LINEN SUPPLY CO	326777	97688 AP	03/24/2022	2-137-5-00-203	3-8 4013-01993 UNIFORM RENTAL	94.09			
4120	ACE IMAGEWEAR	AAA LAUNDRY & LINEN SUPPLY CO	326777	97688 AP	03/24/2022	2-137-5-00-203	3-8 4013-01993 UNIFORM RENTAL	94.09			
4120	ACE IMAGEWEAR	AAA LAUNDRY & LINEN SUPPLY CO	326777	97688 AP	03/24/2022	2-137-5-00-203	3-8 4013-01993 UNIFORM RENTAL	100.51			
									*** VENDOR	4120 TOTAL	288.69
648	COMMERCE BANK-COMMER	COMMERCE BANK-COMMERCIAL CARDS	326735	97647 AP	03/24/2022	2-137-5-00-320	3-7 GRINDING WHEEL	87.57			
2588	FOLEY EQUIPMENT	FOLEY EQUIPMENT	326854	97759 AP	03/25/2022	2-137-5-00-320	3-9 016993 CLAMPS	313.90			
434	HAMM QUARR	HAMM QUARRIES	326780	97691 AP	03/24/2022	2-137-5-00-312	3-10 300467 ROCK	8,104.23			
434	HAMM QUARR	HAMM QUARRIES	326780	97691 AP	03/24/2022	2-137-5-00-312	3-10 300467 ROCK	924.90			
434	HAMM QUARR	HAMM QUARRIES	326780	97691 AP	03/24/2022	2-137-5-00-312	3-10 300467 ROCK	3,798.81			
434	HAMM QUARR	HAMM QUARRIES	326780	97691 AP	03/24/2022	2-137-5-00-312	3-10 300467 ROCK	4,933.25			
434	HAMM QUARR	HAMM QUARRIES	326780	97691 AP	03/24/2022	2-137-5-00-312	3-10 300467 ROCK	1,871.62			
434	HAMM QUARR	HAMM QUARRIES	326780	97691 AP	03/24/2022	2-137-5-00-312	3-10 300467 ROCK	4,502.54			
434	HAMM QUARR	HAMM QUARRIES	326780	97691 AP	03/24/2022	2-137-5-00-312	3-10 300467 ROCK	5,155.13			
434	HAMM QUARR	HAMM QUARRIES	326780	97691 AP	03/24/2022	2-137-5-00-312	3-10 300467 ROCK	292.43			
434	HAMM QUARR	HAMM QUARRIES	326780	97691 AP	03/24/2022	2-137-5-00-312	3-10 300467 ROCK	5,020.22			
434	HAMM QUARR	HAMM QUARRIES	326780	97691 AP	03/24/2022	2-137-5-00-312	3-10 300467 ROCK	9,454.88			
434	HAMM QUARR	HAMM QUARRIES	326780	97691 AP	03/24/2022	2-137-5-00-312	3-10 300467 ROCK	7,934.94			

TYPES OF CHECKS SELECTED: * ALL TYPES

		P.O.NUMBER	CHECK#						
						*** VENDOR		434 TOTAL	51,992.95
369	HOLLIDAY	HOLLIDAY SAND & GRAVEL CO	326855	97760 AP	03/25/2022	2-137-5-00-312	3-11 218331 ROCK	311.50	
369	HOLLIDAY	HOLLIDAY SAND & GRAVEL CO	326855	97760 AP	03/25/2022	2-137-5-00-312	3-11 218331 ROCK	215.19	
369	HOLLIDAY	HOLLIDAY SAND & GRAVEL CO	326855	97760 AP	03/25/2022	2-137-5-00-312	3-11 218331 ROCK	768.86	
						*** VENDOR		369 TOTAL	1,295.55
						TOTAL FUND 137			53,978.66

648	COMMERCE BANK-COMMER	COMMERCE BANK-COMMERCIAL CARDS	326735	97647 AP	03/24/2022	2-144-5-00-2	COA/PALS/ARPA3B/ARPA3C	306.71	
648	COMMERCE BANK-COMMER	COMMERCE BANK-COMMERCIAL CARDS	326735	97647 AP	03/24/2022	2-144-5-00-2	COA/PALS/ARPA3B/ARPA3C	42.00	
648	COMMERCE BANK-COMMER	COMMERCE BANK-COMMERCIAL CARDS	326735	97647 AP	03/24/2022	2-144-5-00-3	COA/PALS/ARPA3B/ARPA3C	19.99	
648	COMMERCE BANK-COMMER	COMMERCE BANK-COMMERCIAL CARDS	326735	97647 AP	03/24/2022	2-144-5-00-3	COA/PALS/ARPA3B/ARPA3C	198.31	
648	COMMERCE BANK-COMMER	COMMERCE BANK-COMMERCIAL CARDS	326735	97647 AP	03/24/2022	2-144-5-00-3	COA/PALS/ARPA3B/ARPA3C	310.14	
						*** VENDOR		648 TOTAL	877.15
						TOTAL FUND 144			877.15

648	COMMERCE BANK-COMMER	COMMERCE BANK-COMMERCIAL CARDS	326735	97647 AP	03/24/2022	2-145-5-00-208	COA/PALS/ARPA3B/ARPA3C	47.93	
648	COMMERCE BANK-COMMER	COMMERCE BANK-COMMERCIAL CARDS	326735	97647 AP	03/24/2022	2-145-5-00-210	COA/PALS/ARPA3B/ARPA3C	40.00	
648	COMMERCE BANK-COMMER	COMMERCE BANK-COMMERCIAL CARDS	326735	97647 AP	03/24/2022	2-145-5-00-213	COA/PALS/ARPA3B/ARPA3C	738.50	
648	COMMERCE BANK-COMMER	COMMERCE BANK-COMMERCIAL CARDS	326735	97647 AP	03/24/2022	2-145-5-00-213	COA/PALS/ARPA3B/ARPA3C	100.00	
648	COMMERCE BANK-COMMER	COMMERCE BANK-COMMERCIAL CARDS	326735	97647 AP	03/24/2022	2-145-5-00-230	FLEETHOSTER APRIL SERVICE	470.25	
648	COMMERCE BANK-COMMER	COMMERCE BANK-COMMERCIAL CARDS	326735	97647 AP	03/24/2022	2-145-5-00-246	IRON MOUNTAIN SHREDDING (38	55.95	
648	COMMERCE BANK-COMMER	COMMERCE BANK-COMMERCIAL CARDS	326735	97647 AP	03/24/2022	2-145-5-00-252	COA/PALS/ARPA3B/ARPA3C	11.40	
648	COMMERCE BANK-COMMER	COMMERCE BANK-COMMERCIAL CARDS	326735	97647 AP	03/24/2022	2-145-5-00-255	COA/PALS/ARPA3B/ARPA3C	88.09	
648	COMMERCE BANK-COMMER	COMMERCE BANK-COMMERCIAL CARDS	326735	97647 AP	03/24/2022	2-145-5-00-260	COA/PALS/ARPA3B/ARPA3C	565.60	
648	COMMERCE BANK-COMMER	COMMERCE BANK-COMMERCIAL CARDS	326735	97647 AP	03/24/2022	2-145-5-00-301	COA/PALS/ARPA3B/ARPA3C	90.27	
648	COMMERCE BANK-COMMER	COMMERCE BANK-COMMERCIAL CARDS	326735	97647 AP	03/24/2022	2-145-5-00-303	COA/PALS/ARPA3B/ARPA3C	273.95	
648	COMMERCE BANK-COMMER	COMMERCE BANK-COMMERCIAL CARDS	326735	97647 AP	03/24/2022	2-145-5-00-305	COA/PALS/ARPA3B/ARPA3C	93.70	
648	COMMERCE BANK-COMMER	COMMERCE BANK-COMMERCIAL CARDS	326735	97647 AP	03/24/2022	2-145-5-00-306	COA/PALS/ARPA3B/ARPA3C	26.99	
648	COMMERCE BANK-COMMER	COMMERCE BANK-COMMERCIAL CARDS	326735	97647 AP	03/24/2022	2-145-5-00-750	COA/PALS/ARPA3B/ARPA3C	1,745.66	
648	COMMERCE BANK-COMMER	COMMERCE BANK-COMMERCIAL CARDS	326735	97647 AP	03/24/2022	2-145-5-00-750	COA/PALS/ARPA3B/ARPA3C	4.93	
648	COMMERCE BANK-COMMER	COMMERCE BANK-COMMERCIAL CARDS	326735	97647 AP	03/24/2022	2-145-5-00-750	COA/PALS/ARPA3B/ARPA3C	73.47	
648	COMMERCE BANK-COMMER	COMMERCE BANK-COMMERCIAL CARDS	326735	97647 AP	03/24/2022	2-145-5-09-100	COA/PALS/ARPA3B/ARPA3C	462.48	
648	COMMERCE BANK-COMMER	COMMERCE BANK-COMMERCIAL CARDS	326735	97647 AP	03/24/2022	2-145-5-09-200	COA/PALS/ARPA3B/ARPA3C	27.99-	
						*** VENDOR		648 TOTAL	4,861.18
516725	ENTERPRISE (ACH)	ENTERPRISE FM TRUST	326690	25	03/21/2022	2-145-5-00-230	516725A VEHICLE LEASE CHARGES/	5,667.43	
86	EVERGY	EVERGY KANSAS CENTRAL INC	326856	97761 AP	03/25/2022	2-145-5-00-246	ELEC SVC COUNCIL ON AGING	880.57	
4755	LEAV PAPER	LEAVENWORTH PAPER AND OFFICE S	326857	97762 AP	03/25/2022	2-145-5-00-201	COUNCIL ON AGING:OFFICE SUPPLI	91.98	
4755	LEAV PAPER	LEAVENWORTH PAPER AND OFFICE S	326857	97762 AP	03/25/2022	2-145-5-00-201	COUNCIL ON AGING:OFFICE SUPPLI	229.95	
4755	LEAV PAPER	LEAVENWORTH PAPER AND OFFICE S	326857	97762 AP	03/25/2022	2-145-5-00-255	COUNCIL ON AGING:OFFICE SUPPLI	250.40	
4755	LEAV PAPER	LEAVENWORTH PAPER AND OFFICE S	326857	97762 AP	03/25/2022	2-145-5-00-255	COUNCIL ON AGING:OFFICE SUPPLI	45.64	
4755	LEAV PAPER	LEAVENWORTH PAPER AND OFFICE S	326857	97762 AP	03/25/2022	2-145-5-00-301	COUNCIL ON AGING:OFFICE SUPPLI	37.89	
4755	LEAV PAPER	LEAVENWORTH PAPER AND OFFICE S	326857	97762 AP	03/25/2022	2-145-5-00-301	COUNCIL ON AGING:OFFICE SUPPLI	332.30	
4755	LEAV PAPER	LEAVENWORTH PAPER AND OFFICE S	326857	97762 AP	03/25/2022	2-145-5-00-303	COUNCIL ON AGING:OFFICE SUPPLI	115.72	
						*** VENDOR		4755 TOTAL	1,103.88
2059	MIDWEST OFFICE TECH	MIDWEST OFFICE TECHNOLOGY INC	326858	97763 AP	03/25/2022	2-145-5-00-208	OPK595_K COPIER COUNCIL ON AGI	194.71	
56	MIRROR	THE TONGANOXIE MIRROR	326783	97694 AP	03/24/2022	2-145-5-00-209	10028613 PUBLIC HEARING AD - C	89.40	
575	US POSTAL SERVICE	US POSTAL SERVICE (QUADIENT-PO	326788	97699 AP	03/24/2022	2-145-5-00-302	CO ON AGING - FEB POSTAGE	179.69	
						TOTAL FUND 145			12,976.86

648	COMMERCE BANK-COMMER	COMMERCE BANK-COMMERCIAL CARDS	326735	97647 AP	03/24/2022	2-146-5-00-218	IRON MOUNTAIN SHREDDING (38	64.62	
648	COMMERCE BANK-COMMER	COMMERCE BANK-COMMERCIAL CARDS	326735	97647 AP	03/24/2022	2-146-5-00-301	CO TREAS - OFFICE SUPPLIES	380.22	
648	COMMERCE BANK-COMMER	COMMERCE BANK-COMMERCIAL CARDS	326735	97647 AP	03/24/2022	2-146-5-00-301	CO TREAS - OFFICE SUPPLIES	710.09	

TYPES OF CHECKS SELECTED: * ALL TYPES

			P.O.NUMBER	CHECK#						
648	COMMERCE BANK-COMMER	COMMERCE BANK-COMMERCIAL CARDS	326735	97647 AP	03/24/2022	2-146-5-00-301	CO TREAS - OFFICE SUPPLIES	1,349.87		
648	COMMERCE BANK-COMMER	COMMERCE BANK-COMMERCIAL CARDS	326735	97647 AP	03/24/2022	2-146-5-00-301	CO TREAS - OFFICE SUPPLIES	96.98		
							*** VENDOR	648 TOTAL		2,601.78
							TOTAL FUND 146			2,601.78
648	COMMERCE BANK-COMMER	COMMERCE BANK-COMMERCIAL CARDS	326735	97647 AP	03/24/2022	2-153-5-00-401	FLEETHOSTER PURCHASE NEW EQUIP	1,049.80		
648	COMMERCE BANK-COMMER	COMMERCE BANK-COMMERCIAL CARDS	326735	97647 AP	03/24/2022	2-153-5-00-401	FLEETHOSTER APRIL SERVICE	809.40		
							*** VENDOR	648 TOTAL		1,859.20
516725	ENTERPRISE (ACH)	ENTERPRISE FM TRUST	326690	25	03/21/2022	2-153-5-00-401	516725A VEHICLE LEASE CHARGES/	11,671.75-		
516725	ENTERPRISE (ACH)	ENTERPRISE FM TRUST	326690	25	03/21/2022	2-153-5-00-401	516725A VEHICLE LEASE CHARGES/	18,559.35		
							*** VENDOR	516725 TOTAL		6,887.60
1755	TRUCK CENTER COMPANI	OMAHA TRUCK CENTER	326787	97698 AP	03/24/2022	2-153-5-00-3	3-5 2 NEW FREIGHTLINER 108SDS	188,346.00		
1755	TRUCK CENTER COMPANI	OMAHA TRUCK CENTER	326787	97698 AP	03/24/2022	2-153-5-00-3	3-5 2 NEW FREIGHTLINER 108SDS	2,860.00		
1755	TRUCK CENTER COMPANI	OMAHA TRUCK CENTER	326787	97698 AP	03/24/2022	2-153-5-00-3	3-5 2 NEW FREIGHTLINER 108SDS	188,346.00		
1755	TRUCK CENTER COMPANI	OMAHA TRUCK CENTER	326787	97698 AP	03/24/2022	2-153-5-00-3	3-5 2 NEW FREIGHTLINER 108SDS	2,860.00		
							*** VENDOR	1755 TOTAL		382,412.00
							TOTAL FUND 153			391,158.80
648	COMMERCE BANK-COMMER	COMMERCE BANK-COMMERCIAL CARDS	326735	97647 AP	03/24/2022	2-155-5-00-403	FLEETHOSTER APRIL SERVICE	139.65		
							TOTAL FUND 155			139.65
26195	ADVANCE AUTO PARTS	GENERAL PARTS DISTRIBUTION	326859	97764 AP	03/25/2022	2-160-5-00-213	670030 TRANSFER STATION PRIME	38.14		
1971	CAROLINA SOFTWARE	CAROLINA SOFTWARE	326860	97765 AP	03/25/2022	2-160-5-00-263	WASTEWORX LASER TICKETS	1,079.41		
648	COMMERCE BANK-COMMER	COMMERCE BANK-COMMERCIAL CARDS	326735	97647 AP	03/24/2022	2-160-5-00-202	TRANSFER STATION:TNG,HHW,PPE,O	1,548.00		
648	COMMERCE BANK-COMMER	COMMERCE BANK-COMMERCIAL CARDS	326735	97647 AP	03/24/2022	2-160-5-00-212	TRANSFER STATION:EQUIP MAINT,P	139.56		
648	COMMERCE BANK-COMMER	COMMERCE BANK-COMMERCIAL CARDS	326735	97647 AP	03/24/2022	2-160-5-00-213	TRANSFER STATION:EQUIP MAINT,P	420.81		
648	COMMERCE BANK-COMMER	COMMERCE BANK-COMMERCIAL CARDS	326735	97647 AP	03/24/2022	2-160-5-00-215	FLEETHOSTER APRIL SERVICE	58.90		
648	COMMERCE BANK-COMMER	COMMERCE BANK-COMMERCIAL CARDS	326735	97647 AP	03/24/2022	2-160-5-00-263	TRANSFER STATION:TNG,HHW,PPE,O	60.91		
648	COMMERCE BANK-COMMER	COMMERCE BANK-COMMERCIAL CARDS	326735	97647 AP	03/24/2022	2-160-5-00-301	TRANSFER STATION:TNG,HHW,PPE,O	353.20		
648	COMMERCE BANK-COMMER	COMMERCE BANK-COMMERCIAL CARDS	326735	97647 AP	03/24/2022	2-160-5-00-303	TRANSFER STATION:TNG,HHW,PPE,O	150.00		
648	COMMERCE BANK-COMMER	COMMERCE BANK-COMMERCIAL CARDS	326735	97647 AP	03/24/2022	2-160-5-00-305	TRANSFER STATION:EQUIP MAINT,P	398.05		
648	COMMERCE BANK-COMMER	COMMERCE BANK-COMMERCIAL CARDS	326735	97647 AP	03/24/2022	2-160-5-00-305	TRANSFER STATION:TNG,HHW,PPE,O	59.40		
							*** VENDOR	648 TOTAL		3,188.83
516725	ENTERPRISE (ACH)	ENTERPRISE FM TRUST	326690	25	03/21/2022	2-160-5-00-215	516725A VEHICLE LEASE CHARGES/	931.98		
446	EQUIPMENT SHARE	EQUIPMENT SHARE INC	326861	97766 AP	03/25/2022	2-160-5-00-213	48309 FIXED BOOM ON BACKHOE, V	8,222.69		
2666	MISC REIMBURSEMENTS	COPPER COLEMAN	326862	97767 AP	03/25/2022	2-160-5-00-202	PER DIEM HHW COURSE JUNCTION C	45.00		
2666	MISC REIMBURSEMENTS	COPPER COLEMAN	326862	97767 AP	03/25/2022	2-160-5-00-202	PER DIEM HHW COURSE JUNCTION C	78.00		
							*** VENDOR	2666 TOTAL		123.00
10703	TIRE TOWN	TIRE TOWN	326786	97697 AP	03/24/2022	2-160-5-00-207	TRANSFER STATION - SCRAP TIRES	500.00		
6885	WH SCALE C	WH SCALE CO	326863	97768 AP	03/25/2022	2-160-5-00-213	LE2858 TEST/CALLIBRATE INBOUND	285.00		
6885	WH SCALE C	WH SCALE CO	326863	97768 AP	03/25/2022	2-160-5-00-213	LE2858 TEST/CALLIBRATE INBOUND	40.00		
6885	WH SCALE C	WH SCALE CO	326863	97768 AP	03/25/2022	2-160-5-00-213	LE2858 TEST/CALLIBRATE INBOUND	30.00		
							*** VENDOR	6885 TOTAL		355.00
2007	WIRENUTS	WIRENUTS	326789	97700 AP	03/24/2022	2-160-5-00-263	TRANSFER STATION:MONITORING,IN	359.40		
2007	WIRENUTS	WIRENUTS	326789	97700 AP	03/24/2022	2-160-5-00-263	TRANSFER STATION:MONITORING,IN	359.40		
2007	WIRENUTS	WIRENUTS	326789	97700 AP	03/24/2022	2-160-5-00-263	TRANSFER STATION:MONITORING,IN	48.00-		
2007	WIRENUTS	WIRENUTS	326789	97700 AP	03/24/2022	2-160-5-00-263	TRANSFER STATION:MONITORING,IN	549.00		
2007	WIRENUTS	WIRENUTS	326789	97700 AP	03/24/2022	2-160-5-00-263	TRANSFER STATION:MONITORING,IN	195.00		
							*** VENDOR	2007 TOTAL		1,414.80
							TOTAL FUND 160			15,853.85
29034	MHS	MCAFEE HENDERSON SOLUTIONS	326872	1626 AP	03/24/2022	2-171-5-03-201	3-4 CONST ENG 2020.045.001 EIS	588.38		

warrants by vendor

TYPES OF CHECKS SELECTED: * ALL TYPES

		P.O.NUMBER	CHECK#					TOTAL FUND 171	588.38
29034	MHS	MCAFEE HENDERSON SOLUTIONS	326713	10111 AP	03/23/2022	2-172-5-00-506	APRA036 PROJ 2022.005.001 CULV	25,569.48	
398	NETSTANDARD INC	NETSTANDARD INC	326714	10112 AP	03/23/2022	2-172-5-00-107	APRA037 LEAVENWORTH VITAL SERV	3,350.00	
								TOTAL FUND 172	28,919.48
1737	AT&T-CAROL STREAM IL	AT&T	326864	97769 AP	03/25/2022	2-174-5-00-210	913A38-0682-421-2 SVC TO 4 TOW	89.26	
1737	AT&T-CAROL STREAM IL	AT&T	326864	97769 AP	03/25/2022	2-174-5-00-210	913A38-0682-421-2 SVC TO 4 TOW	89.26	
1737	AT&T-CAROL STREAM IL	AT&T	326864	97769 AP	03/25/2022	2-174-5-00-210	913A38-0682-421-2 SVC TO 4 TOW	85.84	
1737	AT&T-CAROL STREAM IL	AT&T	326864	97769 AP	03/25/2022	2-174-5-00-210	913A38-0682-421-2 SVC TO 4 TOW	167.72	
								*** VENDOR 1737 TOTAL	432.08
1041	KDOT	KANSAS DEPT OF TRANSPORTATION	326865	97770 AP	03/25/2022	2-174-5-00-210	ANNUAL T-1 LINES FOR COMMS TOW	13,200.00	
1991	MARC	MID-AMERICA REGIONAL COUNCIL	326866	97771 AP	03/25/2022	2-174-5-00-210	LEAV-911 FEB MARC911 EQUIPMENT	28,069.84	
								TOTAL FUND 174	41,701.92
648	COMMERCE BANK-COMMER	COMMERCE BANK-COMMERCIAL CARDS	326735	97647 AP	03/24/2022	2-195-5-00-3	COMM CORR - JUV/ADT OFFICE SUP	416.37	
4755	LEAV PAPER	LEAVENWORTH PAPER AND OFFICE S	326781	97692 AP	03/24/2022	2-195-5-00-3	COMMUNITY CORRECTIONS FURNITUR	1,050.00	
4755	LEAV PAPER	LEAVENWORTH PAPER AND OFFICE S	326781	97692 AP	03/24/2022	2-195-5-00-3	COMMUNITY CORRECTIONS FURNITUR	2,800.00	
								*** VENDOR 4755 TOTAL	3,850.00
2	WATER DEPT	WATER DEPT	326867	97772 AP	03/25/2022	2-195-5-00-3	WATER SVC 520 S 2ND	44.04	
								TOTAL FUND 195	4,310.41
648	COMMERCE BANK-COMMER	COMMERCE BANK-COMMERCIAL CARDS	326735	97647 AP	03/24/2022	2-210-5-00-2	BG:CTHSE,JC,SD1,2,3 UTIL,JANIT	46.67	
								TOTAL FUND 210	46.67
648	COMMERCE BANK-COMMER	COMMERCE BANK-COMMERCIAL CARDS	326735	97647 AP	03/24/2022	2-212-5-00-2	BG:CTHSE,JC,SD1,2,3 UTIL,JANIT	46.67	
								TOTAL FUND 212	46.67
648	COMMERCE BANK-COMMER	COMMERCE BANK-COMMERCIAL CARDS	326735	97647 AP	03/24/2022	2-218-5-00-2	BG:CTHSE,JC,SD1,2,3 UTIL,JANIT	46.66	
648	COMMERCE BANK-COMMER	COMMERCE BANK-COMMERCIAL CARDS	326735	97647 AP	03/24/2022	2-218-5-00-3	O'REILLY (FARR)	7.99	
								*** VENDOR 648 TOTAL	54.65
								TOTAL FUND 218	54.65
2570	BOND ESCROW REFUND	DAVID & TRACEY TURNER	326868	97773 AP	03/25/2022	2-503-5-00-2	REF ENTRANCE PERMIT RAGTOWN RD	100.00	
2570	BOND ESCROW REFUND	MATTHEW & HANNA SAATHOFF	326869	97774 AP	03/25/2022	2-503-5-00-2	3-5 REF ENTRANCE PERMIT 259TH	100.00	
2570	BOND ESCROW REFUND	OSCAR AVILA	326870	97775 AP	03/25/2022	2-503-5-00-2	REF ENTRANCE PERMIT CANTRELL R	100.00	
								*** VENDOR 2570 TOTAL	300.00
								TOTAL FUND 503	300.00
1485	RELIANCE STANDARD	RELIANCE STANDARD	326871	97776 AP	03/25/2022	2-510-2-00-962	GL144512 GROUP LIFE/VOL LIFE M	1,547.00	
1485	RELIANCE STANDARD	RELIANCE STANDARD	326871	97776 AP	03/25/2022	2-510-2-00-962	GL144512 GROUP LIFE/VOL LIFE M	46.80	
1485	RELIANCE STANDARD	RELIANCE STANDARD	326871	97776 AP	03/25/2022	2-510-2-00-965	GL144512 GROUP LIFE/VOL LIFE M	2,899.17	
1485	RELIANCE STANDARD	RELIANCE STANDARD	326871	97776 AP	03/25/2022	2-510-2-00-965	GL144512 GROUP LIFE/VOL LIFE M	2.40	
								*** VENDOR 1485 TOTAL	4,495.37
								TOTAL FUND 510	4,495.37
								TOTAL ALL CHECKS	812,067.31

TYPES OF CHECKS SELECTED: * ALL TYPES

FUND SUMMARY

001	GENERAL	127,525.41
108	COUNTY HEALTH	10,190.13
115	EQUIPMENT RESERVE	11,578.51
117	CO CLERK TECHNOLOGY	150.00
118	TREASURER TECH FUND	594.65
123	JUVENILE CRIME PREVENTION	1,003.21
126	COMM CORR ADULT	108.92
127	COMM CORR ADULT NON GRANT	1,573.14
133	ROAD & BRIDGE	66,508.54
134	SPECIAL ALCOHOL	33,388.00
136	COMM CORR JUVENILE	1,396.50
137	LOCAL SERVICE ROAD & BRIDGE	53,978.66
144	PALS (PETS AND LOVING SENIORS	877.15
145	COUNCIL ON AGING	12,976.86
146	COUNTY TREASURER SPECIAL	2,601.78
153	PUBLIC WORKS,EQUIP.RESERVE FUND	391,158.80
155	LSR CAPITAL EQUIP RESERVE	139.65
160	SOLID WASTE MANAGEMENT	15,853.85
171	S TAX CAP RD PROJ: 2015 SERIES	588.38
172	AMERICAN RECOVERY PLAN	28,919.48
174	911	41,701.92
195	JUVENILE DETENTION	4,310.41
210	SEWER DISTRICT 1: HIGH CREST	46.67
212	SEWER DISTRICT 2: TIMBERLAKES	46.67
218	SEWER DIST #5	54.65
503	ROAD & BRIDGE BOND ESCROW	300.00
510	PAYROLL CLEARING	4,495.37
	TOTAL ALL FUNDS	812,067.31

Consent Agenda 3-30-2022

Checks dated 3/19/2022 - 3/25/2022





AGREEMENT FOR CONSTRUCTION ENGINEERING (INSPECTION) SERVICES

E-18 Bridge Replacement on 231st Street Leavenworth County, Kansas

THIS AGREEMENT for professional services is entered into on _____, 2022, by and between Leavenworth County, Kansas (hereinafter referred to as COUNTY) and McAfee Henderson Solutions, Inc. (hereinafter referred to as ENGINEER).

JURISDICTION: This Agreement shall be interpreted and construed under the laws of the State of Kansas.

1. PROJECT OVERVIEW

McAfee Henderson Solutions, Inc. (ENGINEER) shall provide construction engineering (inspection) services to the COUNTY for the E-18 Bridge Project on 231st Street over Dawson Creek. The published early construction start date is May 19, 2022. The anticipated completion date for the project is November 14, 2022 based on the 180-Calendar Day construction period. There are no Federal or States funds being used to complete the project. Inspection procedures shall follow KDOT standards but with the exclusion of services associated with material certifications and KDOT CMS documentation. Resident inspection is proposed for the project.

The ENGINEER shall perform a pre-construction site improvement analysis that articulates the existing conditions of the structure, associated stream channel, and roadway ditches in comparison to the improvements provided in the construction plans based upon American Rescue Plan Act Funds criteria.

The ENGINEER shall perform all field operations in accordance with the accepted safety practices of the Contractor. The ENGINEER shall furnish all equipment required to accomplish the construction engineering services including, but not limited to transportation, supplies, materials, incidentals, laptop computer, and mobile communications.

2. SCOPE OF SERVICES

- a. The ENGINEER has designated Joseph L. McAfee, PE – KDOT CIT No. 1033 to serve as the Project Manager / Chief Inspector for the project. Additional support inspection staff shall consist of Paul Weixelman, CIT No. 489 and Kevin Schafer, CIT No. 5633. The Project Manager / Chief Inspector shall transmit Project activity documents to the COUNTY. The Project Chief Inspector, and various other qualified support field inspection staff will inspect all work for the project. The ENGINEER will not be authorized to alter or waive the provisions of the Specifications or the Construction Contract. The ENGINEER will not be authorized to issue instructions contrary to the Plans and Specifications, or to act as foreman for the Contractor. However, the ENGINEER shall have the authority to reject work or materials until any questions at issue can be referred to and be decided by the COUNTY.
- b. The ENGINEER shall become familiar with the standard practices of the Specifications, Contract Documents, Plans, and the Contractor's proposed schedule of operations prior to

beginning field services to be performed under the agreement.

- c. ENGINEER shall provide a Resident Project Representative (RPR) to perform the services listed below. ENGINEER's fee for providing RPR services is included in Attachment A: Supporting Data Sheets for Not to Exceed Construction Engineering Fee. Fee is based on Contractor performing all work within the 180 Calendar Day schedule identified in COUNTY's RFP. If additional Calendar days are required due to the construction schedule, this Agreement shall be amended as necessary. RPR duties are as follows:
- i. The inspector shall serve as the resident representative of the Leavenworth County Public Works Department during the construction of the project.
 - ii. The inspector shall maintain all required records of the system installation to include locations of facilities, project log, contractor activities, working days, visitors, and testing in accordance with KDOT.
 - iii. Notification Process: The inspector shall maintain a log of contacts, communications, and complaints of the citizens and the Contractor initiated contacts of citizens during the construction of the project.
 - iv. Reporting: The inspector shall provide a weekly report to the COUNTY of the progress and anticipated work and shall prepare a monthly pay estimate of completed work. The inspector shall record the results of all required testing as specified and provide drafts of all required reports.
 - v. ENGINEER shall perform all testing per KDOT specifications and testing frequencies (current edition).
 - vi. Provide consistent oversight on the Contractor's responsibilities for traffic control.
 - vii. Report to the COUNTY, giving opinions and suggestions regarding defects or deficiencies in the Contractor's work.
 - viii. ENGINEER shall provide and keep field and quantity diaries on hard cover books. The Project Manager/Chief Inspector shall review and approve monthly Pay Estimate vouchers submitted by the Contractor for accuracy and current progress condition. Field measurement and computation of pay items shall be jointly completed by the Contractor's Superintendent and the ENGINEER's Chief Inspector. Following approval the ENGINEER shall forward documentation to COUNTY
 - ix. Prepare and provide SWPPP for construction, all information required to perform this task shall be provided to the Design Engineer. All permits shall be provided by others. ENGINEER shall perform all SWPPP inspections with Contractor's representative.
 - x. Prepare the final "As-Built" Plans for the project in pdf format. As-built plans shall include all major changes to the plans concerning the following items.
 - a) A revised list of benchmarks.
 - b) Major changes in alignment.
 - c) Major changes in grade line.
 - d) Established references on Section Corners.

- e) Major changes in location or flow line of drainage structures.
- f) Drainage structures added or deleted.
- g) Any change of access control.
- h) Changes in stationing of bridge.
- i) Changes in type, size or elevation of bridge.
- j) Changes in grade lines of bridge.

d. Limitations of Authority

- i. ENGINEER shall not be responsible for the means, methods, techniques, sequences, or procedures of construction selected by the Contractor or the safety precautions and programs incident to the work of the Contractor.
 - ii. ENGINEER shall not be responsible for the failure of the Contractor to perform the work in accordance with the Contract Documents. ENGINEER shall not be responsible for the acts or omissions of any Contractor, or subcontractor, or any of the Contractors' or subcontractors' agents or employees or any other persons (except for ENGINEER's own employees and agents) at the site or otherwise performing any of the Contractor's work.
 - iii. ENGINEER shall not authorize any deviation from the Contract Documents or substitution of materials or equipment, unless authorized by the COUNTY.
 - iv. ENGINEER shall not undertake any of the responsibilities of the Contractor, subcontractors, or Contractor's superintendent.
- e. Excluded Services: The services below are specifically excluded from the Scope of Work. If it becomes necessary for the ENGINEER to provide any of these or other services beyond the scope of services listed above and said services are authorized by the COUNTY, they will be performed for an additional fee upon a basis established at such time as the scope of work is defined.
- i. Primary review of shop drawing submittals for the project. Primary review shall be completed by the Design Engineer.
 - ii. Construction staking and land surveying services for the project.
 - iii. Off-site batch plant inspection at Asphalt and Concrete production plants.
- f. ENGINEER's Expectation of the COUNTY: COUNTY shall make available to the ENGINEER sufficient copies of the contract documents, shop drawings, plan revisions, written instructions and other information and data considered by the COUNTY to be necessary to enable the ENGINEER to perform the services under this Agreement for the project. COUNTY shall designate a primary contact to serve as the Project Liaison for the ENGINEER. COUNTY shall designate a COUNTY Stormwater Compliance Contact to serve as the representative charged with receiving Stormwater Pollution Prevention (SWPPP) inspections from the ENGINEER and Contractor's Water Pollution Control Manager. ENGINEER will conduct SWPPP inspections per contract documents. COUNTY shall be responsible for obtaining the Notice of Intent (NOI) and submittal of Notice of Termination (NOT) upon completion of the project.

3. **PROJECT DELIVERABLES**

The ENGINEER shall deliver the following items to the COUNTY at the completion of the project.

- a. Digital copy of the SWPPP document.
- b. Digital copy of the Pre-Construction Site Assessment report.
- c. Original diary and pay template field books.
- d. Digital copy of the As-Built Plans for the project.

4. **COMPENSATION FOR PROFESSIONAL SERVICES**

Not To Exceed Fees: The ENGINEER will provide professional services for this project in accordance with the Scope of Work, Basic Scope of Services, Project Deliverables and Terms and Conditions of Agreement listed herein on an hourly rate plus expenses service plan for the following not to exceed fees. Attachment A: Fee Estimate Supporting Data Sheets for Construction Engineering (Inspection) Services is included for a detailed analysis of professional staff hours and expenses.

Total Professional Hours Fee	153,815.00
Direct Expenses and Material Testing	11,781.36
Total Construction Engineering Fee	\$165,596.36

Professional fees shall be invoiced on a monthly basis using the staff rates and reimbursable expense unit costs identified in Attachment A. The ENGINEER shall receive all payments no later than thirty (30) calendar days after invoice date. Additional services provided by the ENGINEER shall commence only upon authorization by the COUNTY and shall be paid in accordance with a negotiated fee determined by the ENGINEER and COUNTY prior to the ENGINEER commencing work.

5. **SCHEDULE**

ENGINEER shall commit staff to the project based on the following published schedule.

Early Construction Start Date	May 19, 2022
Anticipated Completion of 180 Calendar Day Construction Period	November 14, 2022

6. **TERMS AND CONDITIONS**

The COUNTY and the ENGINEER have entered into this Agreement for professional services.

- A. **Performance of Services:** The Engineer shall perform the basic services as outlined above, and any additional services as required or directed by the COUNTY in consideration of the fee arrangements and payment terms described in "Compensation for Professional Services" above.
- B. **Verification of Existing Conditions:** Because evaluation of the existing structure or site requires that certain assumptions be made regarding existing conditions, and because some

of these assumptions cannot be verified without expending additional sums of money or destroying otherwise adequate or serviceable portions of the site, the COUNTY agrees to indemnify and hold the Engineer harmless from and against any and all damage, liability and cost arising or allegedly arising out of the professional services under this Agreement, except for the sole negligence or willful misconduct of the Engineer. The Engineer shall not be required to sign any documents, no matter by whom requested, that would result in the Engineer having to certify, guarantee or warrant the existence of conditions whose existence the Engineer cannot ascertain.

- C. **Betterment:** If, due to the Engineer's error, any required item or component of the project is omitted from the Construction inspected by the Engineer, in no event will the Engineer be responsible for any cost or expense that provides betterment, upgrade or enhancement of the project.
- D. **Indemnification:** The COUNTY shall, to the fullest extent permitted by law, indemnify and hold harmless the Engineer, his employees, agents and subconsultants from and against all damage, liability and costs arising out of or in any way connected with the performance of the services under this Agreement, excepting only those damages, liabilities or costs attributable to the sole negligence or willful misconduct of the Engineer.
- E. **Insurance:** The Consulting Engineer shall maintain, throughout the duration of this Contract, insurance of such types and in at least such amounts as required herein.

General Liability:	\$ 1,000,000
Automobile Liability:	\$ 1,000,000
Worker's Compensation:	Statutory
Professional Liability:	\$ 1,000,000

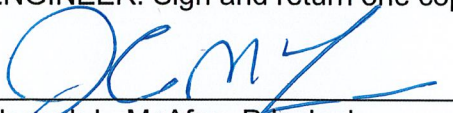
- F. **Jobsite Safety:** Neither the professional activities of the Engineer, nor the presence of his employees and sub-consultants at a construction site, shall relieve the Contractors and any other entity of their obligations, duties and responsibilities including, but not limited to, construction means, methods, sequence, techniques or procedures necessary for performing or coordinating all portions of the Work of construction in accordance with the contract documents and any health/safety precautions required by regulatory agencies. The Engineer and their personnel have no authority to exercise any control over any contractor or other entity or their employees in connection with their work or any health/safety precautions. The COUNTY agrees that the Contractor is solely responsible for jobsite safety, and warrants that this intent shall be made evident in the COUNTY's agreement with the General Contractor. The COUNTY also agrees that the COUNTY, the Engineer and the Engineer's consultants shall be indemnified and shall be made additional insured under the General Contractor's general liability insurance policy.
- G. **Hazardous Materials:** Both parties acknowledged that the Engineer's scope of services does not include any services related to hazardous or toxic materials. In the event the Engineer or any other party encounters hazardous or toxic materials at the jobsite, or should it become known in any way that such materials may be present at the jobsite or any adjacent areas that may affect the performance of the Engineer's services, the Engineer may, at their option and without liability for consequential or any other damages, suspend performance of services on the project until the COUNTY retains appropriate specialist consultants or contractors to identify the hazardous or toxic materials and warrant that the jobsite is in full compliance with applicable laws and regulations.
- H. **Information Provided by Others:** The Engineer shall indicate to the COUNTY the

information needed for rendering of services hereunder. The COUNTY shall provide to the Engineer such information as is available to the COUNTY and contractors, and the Engineer shall be entitled to rely upon the accuracy and completeness thereof. The COUNTY recognizes that it is impossible for the Engineer to assure the accuracy, completeness and sufficiency of such information, either because it is impossible to verify, or because of errors or omissions which may have occurred in assembling the information the COUNTY is providing. Accordingly, the COUNTY agrees to indemnify and hold the Engineer and his sub-consultants harmless from any claim, liability or cost for injury or loss arising or allegedly arising from errors, omissions or inaccuracies in documents or other information provided by the COUNTY to the Engineer.

- I. **Opinions of Probable Costs:** In providing opinions of probable cost associated with change orders, the COUNTY understands that the Engineer has no control over costs or the price of labor, equipment or materials, or over the Contractor's method of pricing, and that the opinions of probable construction costs provided herein are to be made on the basis of the Engineer's qualifications and experience. The Engineer makes no warranty, expressed or implied, as to the accuracy of such opinions of costs.
- J. **Changed Conditions:** The COUNTY shall rely on the Engineer's judgment as to the continued adequacy of this Agreement in light of occurrences or discoveries that were not originally contemplated by or known to the Engineer. Should the Engineer call for contract renegotiations, the Engineer shall identify the changed conditions necessitating renegotiation and the Engineer and the COUNTY shall promptly and in good faith enter into renegotiation of this Agreement. If terms cannot be agreed to, the parties agree that either party has the absolute right to terminate this Agreement.
- K. **Ownership of Documents:** The parties hereto agree that **Leavenworth County** shall retain ownership of all drawings, specifications, and other documents of the **ENGINEER** furnished hereunder. The **ENGINEER** will be permitted to retain reproducible copies of drawings, specifications, and other documents for its files.

7. EXTENT OF AGREEMENT

This proposal represents the entire agreement between the COUNTY and the ENGINEER and supersedes all prior negotiations, representations or agreements, whether written or oral. This agreement may be amended only by written instrument signed by both the COUNTY and the ENGINEER. Sign and return one copy to serve as notice to proceed with services.



Joseph L. McAfee, Principal
McAfee Henderson Solutions, Inc.

3-19-22
Date

County of Leavenworth, Kansas
I have read the above agreement and accept the terms and conditions stated herein:

Mike Smith, Chairman
Leavenworth County Commission

Date

**FEE ESTIMATE
SUPPORTING DATA SHEETS
For
CONSTRUCTION ENGINEERING (INSPECTION) SERVICES**

Project No. Leavenworth County Public Works E-18 Bridge Replacement
County of Leavenworth, Kansas:

CE Fee

- Parameters:**
- (a) Estimated Contractor's Notice to Proceed Date - May 2, 2022
 - (b) 180 Calendar Days - Estimated 26 calendar week construction phase
 - (c) Full-time Resident Inspection, Support Inspector during major work items.
 - (d) KDOT standard on-site material tests shall be completed by MHS Testing Technician. Laboratory tests shall be completed by MHS Testing Technician and Terracon. Soils Proctor testing shall be completed by MHS. Granular Base Proctor shall be supplied by Contractor.
 - (e) Concrete/Asphalt Plant inspection not included, nor requested.
 - (f) Project mileage shall include portal to portal trips from MHS Oskaloosa, KS office location.

Personnel: Project Manager: Joe McAfee, PE, CIT #1033
 Potential Chief Inspectors: Joe McAfee CIT#1033, Ron Weyer CIT#4561,
 Heath Norris, CIT #4396, Paul Weixelman CIT#489
 Potential Support Inspectors: Kevin Schafer, CIT#5633, Vicki McAfee, CIT#4452
 Potential Testing Technician: Kevin Schafer, CIT#5633, Vicki McAfee, CIT#4452

A. PRE-CONSTRUCTION PHASE - Includes Pre-Construction, Inspection, and County meetings, Diary and Pay Template Book setup.

CONSULTANT STAFF	TITLE	HOURS
Joe McAfee	Project Manager	15
Schedule Driven	Chief Inspector	40

A.1 PRE-CONSTRUCTION SITE IMPROVEMENT ANALYSIS REPORT - Includes Site Visit, Engineering Analysis, Final Report.

CONSULTANT STAFF	TITLE	HOURS
Joe McAfee, PE	Project Manager	32
Kevin Schafer	Support Technician	13

B. CONSTRUCTION PHASE - Includes Professional Staff Hours for Full-Time Construction Inspection.

Project Manager – Joe McAfee, Professional Labor Hours - 3 hours per week designated for management of staff, resolution of field issues, coordination with Engineer of Record, and responding to County questions.

Month	Work Weeks (Mon-Fri)	Hours per Week	Saturdays Worked	Regular Hours	Overtime Hours
May	4.5	3	0	13.5	0
June	4	3	0	12	0
July	4	3	0	12	0
August	4.5	3	0	13.5	0
September	4.5	3	0	13.5	0
October	4.5	3	0	13.5	0
Phase Totals	26	N/A	0	78	0

Chief Inspector – Schedule Driven Staff, Professional Labor Hours for full-time inspection, documentation, and project representative.

Month	Working Days (Mon-Fri)	Hours per Day	Saturdays Worked	Regular Hours	Overtime Hours
May	21	10.5	0	220.5	0
June	22	10.5	0	231	0
July	20	10.5	0	210	0
August	21	10.5	0	220.5	0
September	21	10.5	0	220.5	0
October	22	10.5	0	231	0
Phase Totals	127	N/A	0	1,334	0

Support Inspector & Material Testing – Kevin Schafer/Vicki McAfee, Professional Labor Hours - Support Inspector for Concrete Pours, HMA Construction. Material Testing Technician for On-Site Concrete, Soils, Aggregate Testing hours excluding Test Fees.

Month	Working Days (Mon-Fri)	Hours per Day	Saturdays Worked	Regular Hours	Overtime Hours
May	4	6	0	24	0
June	4	6	0	24	0
July	4	6	0	24	0
August	3	6	0	18	0
September	3	6	0	18	0
October	2	6	0	12	0
Phase Totals	20	N/A	0	120	0

C. POST CONSTRUCTION-FINAL DOCUMENTATION PHASE - Includes production of As-Built Plans, Spreadsheet Calculations for Final Pay Quantities, Change Order production and documentation.

CONSULTANT STAFF	TITLE	HOURS
Joe McAfee	Project Manager	8
Schedule Driven	Chief Inspector	40

D. REIMBURSABLE PROJECT DIRECT EXPENSES

DESCRIPTION	UNIT	QUANTITY	UNIT COST	UNIT
Chief Inspector Project Mileage - Daily Inspection from office to site. Total: (127 trips @ 42 miles RT) + (5 trips @ 60 miles RT to Leavenworth County Office).	Mile	5,634	\$0.58	3,267.72
Project Manager and Secondary Field Inspector Project Mileage - 46 jobsite visits during project, 3 jobsite trips for pre and post construction meetings. Total: (49 trips @ 42 miles RT).	Mile	2,058	\$0.58	1,193.64
KDOT Material Testing Fee - See Attached Testing Requirements Worksheet for Breakdown of required tests and applicable fees.	Lump Sum	1	\$7,320.00	7,320.00
Direct Project Expense Total				\$11,781.36

E. TOTAL CONSTRUCTION ENGINEERING ESTIMATE

Contract Phase	Project Duty	Employee	Hours	Professional Labor Rate	Extension
Pre Construction (Includes A & A.1 Services)	Project Manager	Joe McAfee	47	\$ 125.00	5,875.00
	Chief Inspector	Schedule Driven	40	\$ 90.00	3,600.00
	Support Technician	Kevin Schafer	13	\$ 75.00	975.00
Construction	Project Manager	Joe McAfee	78	\$ 125.00	9,750.00
	Chief Inspector	Schedule Driven	1,334	\$ 90.00	120,015.00
	Support Inspector / Testing Tech	Schedule Driven	120	\$ 75.00	9,000.00
Post Construction	Project Manager	Joe McAfee	8	\$ 125.00	1,000.00
	Chief Inspector	Schedule Driven	40	\$ 90.00	3,600.00
Total Professional Hours Fee					153,815.00
Direct Expenses					11,781.36
Total Construction Engineering Fee					165,596.36

This completes our project summary of professional hours and direct expenses. If you have any questions regarding the listed hours please do not hesitate to contact me. We look forward to assisting you with the successful completion of this County of Leavenworth Project.

Respectfully Submitted,



Joseph L. McAfee, President
McAfee Henderson Solutions, Inc.

Material Testing Requirements & Fee - E-18 Bridge Replacement

Test Description	Location	KT Identification	Quantity	Unit Cost	Extension
Soils					
Field Density and Moisture Testing of In-Place Compacted Soils <i>Mainline (1 per 1,000' per lift)</i>	Mainline	KT-11, KT-13	7	35.00	245.00
<i>Side Roads, Driveways, Structures</i>	Sideroads & Driveways		6	35.00	210.00
Soils Proctor with Atterberg Limits (Excludes Contractor Furnish)	Required Lab Fee	ASTM D4328	1	350.00	350.00
Aggregate Base					
Field Density and Moisture Testing of In-Place Compacted Base <i>Gradation Test</i>	Project	KT-2	2	265.00	265.00
<i>Mainline (1 per 1,000' per lift)</i>	Mainline	KT-11, KT-13	4	35.00	140.00
<i>Side Roads (1 per segment per lift)</i>	Sideroads & Driveways		2	35.00	70.00
AB-3 Granular Base Proctor (Supplied by Contractor Supplier)	Project	ASTM D4328	0	350.00	0.00
Asphalt Concrete HMA Base & Surface (Non QC/QA Requirements)					
HMA Commercial Grade Gradation Test	Project	KT-2	2	300.00	600.00
Rolling Procedure for Density (Nuclear)	HMA Base & Surface	KT-32	2	40.00	80.00
Portland Concrete for Bridge & Approach Sections					
Concrete Field Testing - Temperature, Slump, Unit Weight, Air Content	All Segments	KT-17,18,20,21	11	80.00	880.00
Concrete Field Testing - Strength Cylinder Preparation (Sets of 4) (Includes round trip transportation to testing laboratory)	All Segments	KT-22	6	160.00	960.00
Cylinder Strength Laboratory Compression Testing (Sets of 4)	All Segments	ASTM C39	6	300.00	1,800.00
Material Testing Consultant Project Fees					
Project Manager Oversight		Hours	9	125.00	1,125.00
Technician Standby and Port-to-Port Time		Hours	7	40.00	280.00
Equipment Vehicle Charge		Trips	7	45.00	315.00
Total Material Testing Fee:					\$7,320.00



AGREEMENT FOR CONSTRUCTION ENGINEERING (INSPECTION) SERVICES

F-46 Bridge Replacement on 166th Street Leavenworth County, Kansas

THIS AGREEMENT for professional services is entered into on _____, 2022, by and between Leavenworth County, Kansas (hereinafter referred to as COUNTY) and McAfee Henderson Solutions, Inc. (hereinafter referred to as ENGINEER).

JURISDICTION: This Agreement shall be interpreted and construed under the laws of the State of Kansas.

1. PROJECT OVERVIEW

McAfee Henderson Solutions, Inc. (ENGINEER) shall provide construction engineering (inspection) services to the COUNTY for the F-46 Bridge Project on 166th Street over Hog Creek. The published early construction start date is May 19, 2022. The anticipated completion date for the project is September 15, 2022 based on the 120-Calendar Day construction period. There are no Federal or States funds being used to complete the project. Inspection procedures shall follow KDOT standards but with the exclusion of services associated with material certifications and KDOT CMS documentation. Resident inspection is proposed for the project.

The ENGINEER shall perform a pre-construction site improvement analysis that articulates the existing conditions of the structure, associated stream channel, and roadway ditches in comparison to the improvements provided in the construction plans based upon American Rescue Plan Act Funds criteria.

The ENGINEER shall perform all field operations in accordance with the accepted safety practices of the Contractor. The ENGINEER shall furnish all equipment required to accomplish the construction engineering services including, but not limited to transportation, supplies, materials, incidentals, laptop computer, and mobile communications.

2. SCOPE OF SERVICES

- a. The ENGINEER has designated Joseph L. McAfee, PE – KDOT CIT No. 1033 to serve as the Project Manager / Chief Inspector for the project. Additional support inspection staff shall consist of Paul Weixelman, CIT No. 489 and Kevin Schafer, CIT No. 5633. The Project Manager / Chief Inspector shall transmit Project activity documents to the COUNTY. The Project Chief Inspector, and various other qualified support field inspection staff will inspect all work for the project. The ENGINEER will not be authorized to alter or waive the provisions of the Specifications or the Construction Contract. The ENGINEER will not be authorized to issue instructions contrary to the Plans and Specifications, or to act as foreman for the Contractor. However, the ENGINEER shall have the authority to reject work or materials until any questions at issue can be referred to and be decided by the COUNTY.
- b. The ENGINEER shall become familiar with the standard practices of the Specifications, Contract Documents, Plans, and the Contractor's proposed schedule of operations prior to

beginning field services to be performed under the agreement.

- c. ENGINEER shall provide a Resident Project Representative (RPR) to perform the services listed below. ENGINEER's fee for providing RPR services is included in Attachment A: Supporting Data Sheets for Not to Exceed Construction Engineering Fee. Fee is based on Contractor performing all work within the 180 Calendar Day schedule identified in COUNTY's RFP. If additional Calendar days are required due to the construction schedule, this Agreement shall be amended as necessary. RPR duties are as follows:
- i. The inspector shall serve as the resident representative of the Leavenworth County Public Works Department during the construction of the project.
 - ii. The inspector shall maintain all required records of the system installation to include locations of facilities, project log, contractor activities, working days, visitors, and testing in accordance with KDOT.
 - iii. Notification Process: The inspector shall maintain a log of contacts, communications, and complaints of the citizens and the Contractor initiated contacts of citizens during the construction of the project.
 - iv. Reporting: The inspector shall provide a weekly report to the COUNTY of the progress and anticipated work and shall prepare a monthly pay estimate of completed work. The inspector shall record the results of all required testing as specified and provide drafts of all required reports.
 - v. ENGINEER shall perform all testing per KDOT specifications and testing frequencies (current edition).
 - vi. Provide consistent oversight on the Contractor's responsibilities for traffic control.
 - vii. Report to the COUNTY, giving opinions and suggestions regarding defects or deficiencies in the Contractor's work.
 - viii. ENGINEER shall provide and keep field and quantity diaries on hard cover books. The Project Manager/Chief Inspector shall review and approve monthly Pay Estimate vouchers submitted by the Contractor for accuracy and current progress condition. Field measurement and computation of pay items shall be jointly completed by the Contractor's Superintendent and the ENGINEER's Chief Inspector. Following approval the ENGINEER shall forward documentation to COUNTY
 - ix. Prepare the final "As-Built" Plans for the project in pdf format. As-built plans shall include all major changes to the plans concerning the following items.
 - a) A revised list of benchmarks.
 - b) Major changes in alignment.
 - c) Major changes in grade line.
 - d) Established references on Section Corners.
 - e) Major changes in location or flow line of drainage structures.
 - f) Drainage structures added or deleted.
 - g) Any change of access control.
 - h) Changes in stationing of bridge.

- i) Changes in type, size or elevation of bridge.
- j) Changes in grade lines of bridge.

d. Limitations of Authority

- i. ENGINEER shall not be responsible for the means, methods, techniques, sequences, or procedures of construction selected by the Contractor or the safety precautions and programs incident to the work of the Contractor.
 - ii. ENGINEER shall not be responsible for the failure of the Contractor to perform the work in accordance with the Contract Documents. ENGINEER shall not be responsible for the acts or omissions of any Contractor, or subcontractor, or any of the Contractors' or subcontractors' agents or employees or any other persons (except for ENGINEER's own employees and agents) at the site or otherwise performing any of the Contractor's work.
 - iii. ENGINEER shall not authorize any deviation from the Contract Documents or substitution of materials or equipment, unless authorized by the COUNTY.
 - iv. ENGINEER shall not undertake any of the responsibilities of the Contractor, subcontractors, or Contractor's superintendent.
- e. Excluded Services: The services below are specifically excluded from the Scope of Work. If it becomes necessary for the ENGINEER to provide any of these or other services beyond the scope of services listed above and said services are authorized by the COUNTY, they will be performed for an additional fee upon a basis established at such time as the scope of work is defined.
- i. Primary review of shop drawing submittals for the project. Primary review shall be completed by the Design Engineer.
 - ii. Construction staking and land surveying services for the project.
 - iii. Off-site batch plant inspection at Asphalt and Concrete production plants.
- f. ENGINEER's Expectation of the COUNTY: COUNTY shall make available to the ENGINEER sufficient copies of the contract documents, shop drawings, plan revisions, written instructions and other information and data considered by the COUNTY to be necessary to enable the ENGINEER to perform the services under this Agreement for the project. COUNTY shall designate a primary contact to serve as the Project Liaison for the ENGINEER. COUNTY shall designate a COUNTY Stormwater Compliance Contact to serve as the representative charged with receiving Stormwater Pollution Prevention (SWPPP) inspections from the ENGINEER and Contractor's Water Pollution Control Manager. ENGINEER will conduct SWPPP inspections per contract documents. COUNTY shall be responsible for obtaining the Notice of Intent (NOI) and submittal of Notice of Termination (NOT) upon completion of the project.

3. **PROJECT DELIVERABLES**

The ENGINEER shall deliver the following items to the COUNTY at the completion of the project.

- a. Digital copy of the Pre-Construction Site Assessment report.
- b. Original diary and pay template field books.
- c. Digital copy of the As-Built Plans for the project.

4. **COMPENSATION FOR PROFESSIONAL SERVICES**

Not To Exceed Fees: The ENGINEER will provide professional services for this project in accordance with the Scope of Work, Basic Scope of Services, Project Deliverables and Terms and Conditions of Agreement listed herein on an hourly rate plus expenses service plan for the following not to exceed fees. Attachment A: Fee Estimate Supporting Data Sheets for Construction Engineering (Inspection) Services is included for a detailed analysis of professional staff hours and expenses.

Total Professional Hours Fee	104,945.00
Direct Expenses and Material Testing	8,752.08
Total Construction Engineering Fee	\$113,697.08

Professional fees shall be invoiced on a monthly basis using the staff rates and reimbursable expense unit costs identified in Attachment A. The ENGINEER shall receive all payments no later than thirty (30) calendar days after invoice date. Additional services provided by the ENGINEER shall commence only upon authorization by the COUNTY and shall be paid in accordance with a negotiated fee determined by the ENGINEER and COUNTY prior to the ENGINEER commencing work.

5. **SCHEDULE**

ENGINEER shall commit staff to the project based on the following published schedule.

Early Construction Start Date	May 19, 2022
Anticipated Completion of 180 Calendar Day Construction Period	September 15, 2022

6. **TERMS AND CONDITIONS**

The COUNTY and the ENGINEER have entered into this Agreement for professional services.

- A. **Performance of Services:** The Engineer shall perform the basic services as outlined above, and any additional services as required or directed by the COUNTY in consideration of the fee arrangements and payment terms described in "Compensation for Professional Services" above.
- B. **Verification of Existing Conditions:** Because evaluation of the existing structure or site requires that certain assumptions be made regarding existing conditions, and because some

of these assumptions cannot be verified without expending additional sums of money or destroying otherwise adequate or serviceable portions of the site, the COUNTY agrees to indemnify and hold the Engineer harmless from and against any and all damage, liability and cost arising or allegedly arising out of the professional services under this Agreement, except for the sole negligence or willful misconduct of the Engineer. The Engineer shall not be required to sign any documents, no matter by whom requested, that would result in the Engineer having to certify, guarantee or warrant the existence of conditions whose existence the Engineer cannot ascertain.

- C. **Betterment:** If, due to the Engineer's error, any required item or component of the project is omitted from the Construction inspected by the Engineer, in no event will the Engineer be responsible for any cost or expense that provides betterment, upgrade or enhancement of the project.
- D. **Indemnification:** The COUNTY shall, to the fullest extent permitted by law, indemnify and hold harmless the Engineer, his employees, agents and subconsultants from and against all damage, liability and costs arising out of or in any way connected with the performance of the services under this Agreement, excepting only those damages, liabilities or costs attributable to the sole negligence or willful misconduct of the Engineer.
- E. **Insurance:** The Consulting Engineer shall maintain, throughout the duration of this Contract, insurance of such types and in at least such amounts as required herein.

General Liability:	\$ 1,000,000
Automobile Liability:	\$ 1,000,000
Worker's Compensation:	Statutory
Professional Liability:	\$ 1,000,000

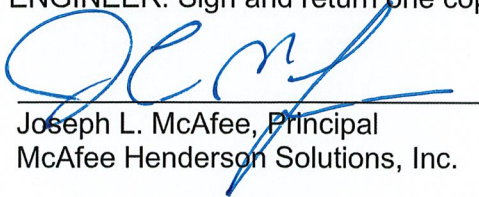
- F. **Jobsite Safety:** Neither the professional activities of the Engineer, nor the presence of his employees and sub-consultants at a construction site, shall relieve the Contractors and any other entity of their obligations, duties and responsibilities including, but not limited to, construction means, methods, sequence, techniques or procedures necessary for performing or coordinating all portions of the Work of construction in accordance with the contract documents and any health/safety precautions required by regulatory agencies. The Engineer and their personnel have no authority to exercise any control over any contractor or other entity or their employees in connection with their work or any health/safety precautions. The COUNTY agrees that the Contractor is solely responsible for jobsite safety, and warrants that this intent shall be made evident in the COUNTY's agreement with the General Contractor. The COUNTY also agrees that the COUNTY, the Engineer and the Engineer's consultants shall be indemnified and shall be made additional insured under the General Contractor's general liability insurance policy.
- G. **Hazardous Materials:** Both parties acknowledged that the Engineer's scope of services does not include any services related to hazardous or toxic materials. In the event the Engineer or any other party encounters hazardous or toxic materials at the jobsite, or should it become known in any way that such materials may be present at the jobsite or any adjacent areas that may affect the performance of the Engineer's services, the Engineer may, at their option and without liability for consequential or any other damages, suspend performance of services on the project until the COUNTY retains appropriate specialist consultants or contractors to identify the hazardous or toxic materials and warrant that the jobsite is in full compliance with applicable laws and regulations.
- H. **Information Provided by Others:** The Engineer shall indicate to the COUNTY the

information needed for rendering of services hereunder. The COUNTY shall provide to the Engineer such information as is available to the COUNTY and contractors, and the Engineer shall be entitled to rely upon the accuracy and completeness thereof. The COUNTY recognizes that it is impossible for the Engineer to assure the accuracy, completeness and sufficiency of such information, either because it is impossible to verify, or because of errors or omissions which may have occurred in assembling the information the COUNTY is providing. Accordingly, the COUNTY agrees to indemnify and hold the Engineer and his sub-consultants harmless from any claim, liability or cost for injury or loss arising or allegedly arising from errors, omissions or inaccuracies in documents or other information provided by the COUNTY to the Engineer.

- I. **Opinions of Probable Costs:** In providing opinions of probable cost associated with change orders, the COUNTY understands that the Engineer has no control over costs or the price of labor, equipment or materials, or over the Contractor's method of pricing, and that the opinions of probable construction costs provided herein are to be made on the basis of the Engineer's qualifications and experience. The Engineer makes no warranty, expressed or implied, as to the accuracy of such opinions of costs.
- J. **Changed Conditions:** The COUNTY shall rely on the Engineer's judgment as to the continued adequacy of this Agreement in light of occurrences or discoveries that were not originally contemplated by or known to the Engineer. Should the Engineer call for contract renegotiations, the Engineer shall identify the changed conditions necessitating renegotiation and the Engineer and the COUNTY shall promptly and in good faith enter into renegotiation of this Agreement. If terms cannot be agreed to, the parties agree that either party has the absolute right to terminate this Agreement.
- K. **Ownership of Documents:** The parties hereto agree that **Leavenworth County** shall retain ownership of all drawings, specifications, and other documents of the **ENGINEER** furnished hereunder. The **ENGINEER** will be permitted to retain reproducible copies of drawings, specifications, and other documents for its files.

7. EXTENT OF AGREEMENT

This proposal represents the entire agreement between the COUNTY and the ENGINEER and supersedes all prior negotiations, representations or agreements, whether written or oral. This agreement may be amended only by written instrument signed by both the COUNTY and the ENGINEER. Sign and return one copy to serve as notice to proceed with services.



Joseph L. McAfee, Principal
McAfee Henderson Solutions, Inc.

3-19-22
Date

County of Leavenworth, Kansas
I have read the above agreement and accept the terms and conditions stated herein:

Mike Smith, Chairman
Leavenworth County Commission

Date

**FEE ESTIMATE
SUPPORTING DATA SHEETS
For
CONSTRUCTION ENGINEERING (INSPECTION) SERVICES**

Project No. Leavenworth County Public Works F-46 Bridge Replacement
County of Leavenworth, Kansas:

CE Fee

- Parameters:**
- (a) Estimated Contractor's Notice to Proceed Date - May 2, 2022
 - (b) 120 Calendar Days - Estimated 18 calendar week construction phase
 - (c) Full-time Resident Inspection, Support Inspector during major work items.
 - (d) KDOT standard on-site material tests shall be completed by MHS Testing Technician. Laborator shall be completed by MHS Testing Technician and Terracon. Soils Proctor testing shall be completed by MHS. Granular Base Proctor shall be supplied by Contractor.
 - (e) Concrete/Asphalt Plant inspection not included, nor requested.
 - (f) Project mileage shall include portal to portal trips from MHS Oskaloosa, KS office location.

Personnel: Project Manager: Joe McAfee, PE, CIT #1033
 Potential Chief Inspectors: Joe McAfee CIT#1033, Ron Weyer CIT#4561,
 Heath Norris, CIT #4396, Paul Weixelman CIT#489
 Potential Support Inspectors: Kevin Schafer, CIT#5633, Vicki McAfee, CIT#4452
 Potential Testing Technician: Kevin Schafer, CIT#5633, Vicki McAfee, CIT#4452

A. PRE-CONSTRUCTION PHASE - Includes Pre-Construction, Inspection, and County meetings, Diary and Pay Template Book setup.

CONSULTANT STAFF	TITLE	HOURS
Joe McAfee	Project Manager	15
Schedule Driven	Chief Inspector	34

A.1 PRE-CONSTRUCTION SITE IMPROVEMENT ANALYSIS REPORT - Includes Site Visit, Engineering Analysis, Final Report.

CONSULTANT STAFF	TITLE	HOURS
Joe McAfee, PE	Project Manager	32
Kevin Schafer	Support Technician	13

B. CONSTRUCTION PHASE - Includes Professional Staff Hours for Full-Time Construction Inspection.

Project Manager – Joe McAfee, Professional Labor Hours - 3 hours per week designated for management of staff, resolution of field issues, coordination with Engineer of Record, and responding to County questions.

Month	Work Weeks (Mon-Fri)	Hours per Week	Saturdays Worked	Regular Hours	Overtime Hours
May	4.5	3	0	13.5	0
June	4	3	0	12	0
July	4	3	0	12	0
August	4.5	3	0	13.5	0
Phase Totals	17	N/A	0	51	0

Chief Inspector – Schedule Driven Staff, Professional Labor Hours for full-time inspection, documentation, and project representative.

Month	Working Days (Mon-Fri)	Hours per Day	Saturdays Worked	Regular Hours	Overtime Hours
May	21	10.5	0	220.5	0
June	22	10.5	0	231	0
July	20	10.5	0	210	0
August	21	10.5	0	220.5	0
Phase Totals	84	N/A	0	882	0

Support Inspector & Material Testing – Kevin Schafer/Vicki McAfee, Professional Labor Hours - Support Inspector for Concrete Pours, HMA Construction. Material Testing Technician for On-Site Concrete, Soils, Aggregate Testing hours excluding Test Fees.

Month	Working Days (Mon-Fri)	Hours per Day	Saturdays Worked	Regular Hours	Overtime Hours
May	4	6	0	24	0
June	3	6	0	18	0
July	3	6	0	18	0
August	2	6	0	12	0
Phase Totals	12	N/A	0	72	0

C. POST CONSTRUCTION-FINAL DOCUMENTATION PHASE - Includes production of As-Built Plans, Spreadsheet Calculations for Final Pay Quantities, Change Order production and documentation.

CONSULTANT STAFF	TITLE	HOURS
Joe McAfee	Project Manager	8
Schedule Driven	Chief Inspector	32

D. REIMBURSABLE PROJECT DIRECT EXPENSES

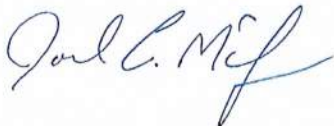
DESCRIPTION	UNIT	QUANTITY	UNIT COST	UNIT
Chief Inspector Project Mileage - Daily Inspection from office to site. Total: (84 trips @ 56 miles RT) + (3 trips @ 60 miles RT to Leavenworth County Office).	Mile	4,884	\$0.58	2,832.72
Project Manager and Secondary Field Inspector Project Mileage - 29 jobsite visits during project, 3 jobsite trips for pre and post construction meetings. Total: (32 trips @ 56 miles RT).	Mile	1,792	\$0.58	1,039.36
KDOT Material Testing Fee - See Attached Testing Requirements Worksheet for Breakdown of required tests and applicable fees.	Lump Sum	1	\$4,880.00	4,880.00
Direct Project Expense Total				\$8,752.08

E. TOTAL CONSTRUCTION ENGINEERING ESTIMATE

Contract Phase	Project Duty	Employee	Hours	Professional Labor Rate	Extension
Pre Construction (Includes A & A.1 Services)	Project Manager	Joe McAfee	47	\$ 125.00	5,875.00
	Chief Inspector	Schedule Driven	34	\$ 90.00	3,060.00
	Support Technician	Kevin Schafer	13	\$ 75.00	975.00
Construction	Project Manager	Joe McAfee	51	\$ 125.00	6,375.00
	Chief Inspector	Schedule Driven	882	\$ 90.00	79,380.00
	Support Inspector / Testing Tech	Schedule Driven	72	\$ 75.00	5,400.00
Post Construction	Project Manager	Joe McAfee	8	\$ 125.00	1,000.00
	Chief Inspector	Schedule Driven	32	\$ 90.00	2,880.00
Total Professional Hours Fee					104,945.00
Direct Expenses					8,752.08
Total Construction Engineering Fee					113,697.08

This completes our project summary of professional hours and direct expenses. If you have any questions regarding the listed hours please do not hesitate to contact me. We look forward to assisting you with the successful completion of this County of Leavenworth Project.

Respectfully Submitted,



Joseph L. McAfee, President
McAfee Henderson Solutions, Inc.

Material Testing Requirements & Fee - F-46 Bridge Replacement

Test Description	Location	KT Identification	Quantity	Unit Cost	Extension
Soils					
Field Density and Moisture Testing of In-Place Compacted Soils					
<i>Mainline (1 per 1,000' per lift)</i>	Mainline	KT-11, KT-13	6	35.00	210.00
<i>Side Roads & Driveways (1 per segment per lift)</i>	Sideroads & Driveways		4	35.00	140.00
Soils Proctor with Atterberg Limits (Excludes Contractor Furnish)	Required Lab Fee	ASTM D4328	1	350.00	350.00
Aggregate Base					
Field Density and Moisture Testing of In-Place Compacted Base					
<i>Gradation Test</i>	Project	KT-2	1	265.00	265.00
<i>Mainline (1 per 1,000' per lift)</i>	Mainline	KT-11, KT-13	4	35.00	140.00
<i>Side Roads (1 per segment per lift)</i>	Sideroads & Driveways		2	35.00	70.00
AB-3 Granular Base Proctor (Supplied by Contractor Supplier)	Project	ASTM D4328	0	350.00	0.00
Asphalt Concrete HMA Base & Surface (Non QC/QA Requirements)					
HMA Commercial Grade Gradation Test	Project	KT-2	2	300.00	600.00
Rolling Procedure for Density (Nuclear)	HMA Base & Surface	KT-32	2	35.00	70.00
Portland Concrete for Bridge & Approach Sections					
Concrete Field Testing - Temperature, Slump, Unit Weight, Air Content	All Segments	KT-17,18,20,21	5	80.00	400.00
Concrete Field Testing - Strength Cylinder Preparation (Sets of 4) (Includes round trip transportation to testing laboratory)	All Segments	KT-22	3	160.00	480.00
Cylinder Strength Laboratory Compression Testing (Sets of 4)	All Segments	ASTM C39	3	300.00	900.00
Material Testing Consultant Project Fees					
Project Manager Oversight		Hours	8	125.00	1,000.00
Technician Standby and Port-to-Port Time		Hours	3	40.00	120.00
Equipment Vehicle Charge		Trips	3	45.00	135.00
Total Material Testing Fee:					\$4,880.00

**AGREEMENT BETWEEN
Leavenworth County, Kansas
and Contractor**

For

PROJECT: **Bridge F-46**

THIS AGREEMENT is made and entered into this 13 day of April, 2022.

by and between Leavenworth County, Kansas, hereinafter the "County", and Dondlinger & Sons Const. Co., Inc., hereinafter the "Contractor";

WITNESSETH:

WHEREAS, the County has caused to be prepared, in accordance with the law, Notice to Bidders, Instructions to Bidders, Bid, this Agreement, General and Special Conditions, Plans, Specifications and other Contract Documents, as defined in the General Conditions, for the work herein described, and has approved and adopted these said Contract Documents and has caused to be published, in the manner and for the time required by law, an advertisement inviting sealed Bids for furnishing construction materials, labor, tools, equipment and transportation necessary for, and in connection with, the construction of public improvements in accordance with the terms of this Agreement; and

WHEREAS, the Contractor, in response to the Notice to Bidders, has submitted to the County, in the manner and at the time specified, a sealed Bid in accordance with the terms of this Agreement; and

WHEREAS, the County, in the manner prescribed by law, has publicly opened, examined and canvassed the Bids submitted, and as a result of this canvass has, in accordance with the law, determined and declared the Contractor to be the lowest and best responsible bidder for the construction of the public improvements, and has duly awarded to the Contractor a contract therefor upon the terms and conditions set forth in this Agreement and for the sum or sums named in the Bid attached to and made a part of this Agreement.

NOW, THEREFORE, in consideration of the compensation to be paid the Contractor, and of the mutual agreements herein contained, the parties hereto have agreed, and hereby agree, the County for itself and its successors, and the Contractor for itself, himself/herself or themselves, its, his/her or their successors and assigns, or its, his/her or their executors and administrators, as follows:

ARTICLE I. The Contractor will furnish at its own cost and expense all labor, tools, equipment, materials and transportation required to construct and complete the work as designated, described and required by the Contract Documents, to wit:

Bridge F-46, all in accordance with the Notice to Bidders, Instructions to Bidders, Bid, this Agreement, General, Supplementary and Special Conditions, Plans, Specifications and other Contract Documents as defined in Article I of the General Conditions of the Contract for Construction, on file with Leavenworth County, Kansas, all of which Contract Documents form the Contract, and are as fully a part hereof as if repeated verbatim herein; all work to be done in a good, substantial and workmanlike manner to the entire satisfaction of the County, and in accordance with the laws of the State of Kansas and the United States of America. All terms used herein shall have the meanings ascribed to them in the General Conditions unless otherwise specified.

ARTICLE II. The County shall pay to the Contractor for the performance of the work embraced in this Contract, and the Contractor will accept in full compensation therefor, the sum of

Six Hundred Seventy-Six Thousand Three Hundred Thirty-Eight and zero cents DOLLARS (\$ 676,338.00)
(subject to adjustment as provided by the Contract Documents) for all work covered by and included in the Contract award and designated in the foregoing Article I, payment thereof to be made in cash or its equivalent and in the manner provided in the Contract Documents.

ARTICLE III. The Contractor shall commence work upon the date stated in the Notice to Proceed, and will be complete with all work covered by this Contract and be ready for final payment **before October 14, 2022**. Once construction has begun, contractor has 120 calendar days to complete construction. Time is of the essence. Accordingly, liquidated damages shall be assessed against Contractor, at a rate of **\$ 500.00/day** for each and every calendar day the work remains incomplete over the specified completion date.

ARTICLE IV. The Contractor shall not subcontract, sell, transfer, assign or otherwise dispose of the Contract or any portion thereof without previous written consent of the County. In case such consent is given, the Contractor shall be permitted to subcontract a portion thereof, but shall self- perform not less than forty percent (40%) of the total Contract Price based upon the unit prices within the Bid submitted to the County by the Contractor. No subcontracts, or other transfer of Contract, shall release the Contractor of its liability under the Contract and Bonds applicable thereto.

ARTICLE V. Contractor specifically acknowledges and confirms that:

- 1.) it has visited the site, made all inspections it deems appropriate and has read and fully understands the Contract Documents, including all obligations and responsibilities undertaken by it as specified herein and in the other Contract Documents and knowingly accepts same;
- 2.) it has furnished copies of all Contract Documents to its insurance carrier(s) and its surety(ies); and
- 3.) its insurance carrier(s) and surety(ies) agree to be bound as specified herein, in the Contract Documents and in the insurance policy(ies) and bonds as to liability and surety coverage.

ARTICLE VI. It is specifically agreed between the parties executing this Agreement that the Contract Documents are not intended to create any third party beneficiary relationship nor to authorize anyone not a party to this Agreement to maintain a suit for personal injuries or property damage pursuant to the terms or provisions of this Agreement. The duties, obligations and responsibilities of the parties to this Agreement with respect to third parties shall remain as imposed by law.

ARTICLE VII. This Agreement, together with the other Contract Documents, constitutes the entire agreement between the parties and supersedes all prior agreements, whether oral or written, covering the same subject matter. This Agreement may not be modified or amended except as provided herein or in the other Contract Documents.

ARTICLE VIII. This Agreement is entered into, under and pursuant to, and is to be construed and enforceable in accordance with, the laws of the State of Kansas.

ARTICLE IX. Should any provision of this Agreement or the other Contract Documents be determined to be void, invalid, unenforceable or illegal for whatever reason, such provision(s) shall be null and void; provided, however, that the remaining provisions of this Agreement and/or the other Contract Documents shall be unaffected thereby and shall continue to be valid and enforceable.

IN WITNESS WHEREOF, Leavenworth County, Kansas, has caused this Agreement to be executed on its behalf, thereunto duly authorized, and the said Contractor has executed One (1) counterpart of this Contract in the prescribed form and manner, the day and year first above written.

ATTEST:

Leavenworth County, Kansas

Janet Klasinski, County Clerk

By: _____
Doug Smith, Third District & Chairman

ATTEST:

Contractor: Dondlinger & Sons Construction Co., Inc.

April Taube

Title: April Taube, Secretary

By: Mark Lorenz

Mark Lorenz, Vice President

CORPORATE SEAL

If Contractor is not an individual, authority for signing contract must be shown or attached.

**Leavenworth County
Request for Board Action
Resolution 2022-08
Proposed Amendment to the 2006 Leavenworth County Zoning and Subdivision
Regulations – Article 22**

Date: March 30, 2022

To: Board of County Commissioners

From: Planning & Zoning Staff

Department Head Review: Krystal Voth, Reviewed

Additional Reviews as needed:

Budget Review Administrator Review Legal Review

Action Requested: Approve Resolution 2022-08 (Case No. DEV-22-004), Proposed Amendment to the Leavenworth County Zoning and Subdivision Regulations – Article 22.

Analysis: This is a request to consider a proposed amendment to the 2006 Leavenworth County Zoning and Subdivision Regulations. The proposed amendment is for the following Article 22 – Special Use Permits and Temporary Use Permits.

The proposed amendments would remove time limitations on Special Use Permits, remove requirements that are no longer in keeping with current practice and allow for a Type 6 to the Temporary Use Permits. Special Use Permits would be allowed to run without time limits, as long as the permit remains in good standing and the property is in compliance with all of the conditions of their approval. If a Special Use Permit is found to not be in good standing or out of compliance with their approval, staff would proceed, through code enforcement action, to remedy the situation until the property was brought back into compliance or the applicant has sought and been approved for modifications to their Permit.

In addition, staff recommends that a Type 6 be added to the Temporary Use Permit regulations to allow the Planning Commission and Board of County Commissioners to approve a temporary permit for businesses that would otherwise require a Special Use Permit but are only of a temporary nature.

Recommendation: The Planning Commission voted 7-0 to recommend approval of Resolution 2022-08 (Case No. DEV-22-004) Amendment to the 2006 Leavenworth County Zoning and Subdivision Regulations – Article 22.

Alternatives:

1. Approve Resolution 2022-08 (Case No. DEV-22-004) Amendment to the 2006 Leavenworth County Zoning and Subdivision Regulations – Article 22., with Findings of Fact, and with or without conditions; or
2. Deny Resolution 2022-08 (Case No. DEV-22-004) Amendment to the 2006 Leavenworth County Zoning and Subdivision Regulations – Article 22., with Findings of Fact; or
3. Revise or Modify the Planning Commission Recommendation to Resolution 2022-08 (Case No. DEV-22-004) Amendment to the 2006 Leavenworth County Zoning and Subdivision Regulations – Article 22., with Findings of Fact; or
4. Remand the case back to the Planning Commission.

Budgetary Impact:

- X Not Applicable
- Budgeted item with available funds
- Non-Budgeted item with available funds through prioritization
- Non-Budgeted item with additional funds requested

Total Amount Requested:

\$0.00

Additional Attachments: Staff Report, Planning Commission Minutes

Resolution 2022-08
Proposed Amendment to the 2006 Leavenworth County Zoning and
Subdivision Regulations
Special Use Permits and Temporary Use Permits

Staff Report – Board of County Commissioners

March 30, 2022

GENERAL INFORMATION:

Applicant: Leavenworth County Planning and Zoning Department

Planner: Amy Allison

REQUEST:

This is a request to consider a proposed amendment to the 2006 Leavenworth County Zoning and Subdivision Regulations. Proposed amendment is for the following Articles:

Article 22 – Special Use Permits and Temporary Use Permits

The proposed language amendment would allow Special Use Permits to be permitted to run without time limitations unless the Permit was found to be in violation of their approval or if the business ceases operation for more than one year. The Board of County Commissioners held a Study Session in January 2022, where support was given for the language amendment. Additional changes address modification of the application and annual review process.

PLANNING COMMISSION RECOMMENDATION:

The Planning Commission voted 7-0 to recommend approval of Resolution 2022-08 (Case No.DEV-22-004), proposed amendment to the 2006 Leavenworth County Zoning and Subdivision Regulations.

ACTION OPTIONS:

1. Approve Resolution 2022-08 (Case No. DEV-22-004) Amendment to the 2006 Leavenworth County Zoning and Subdivision Regulations – Article 22., with Findings of Fact, and with or without conditions; or
2. Deny Resolution 2022-08 (Case No. DEV-22-004) Amendment to the 2006 Leavenworth County Zoning and Subdivision Regulations – Article 22., with Findings of Fact; or
3. Revise or Modify the Planning Commission Recommendation to Resolution 2022-08 (Case No. DEV-22-004) Amendment to the 2006 Leavenworth County Zoning and Subdivision Regulations – Article 22., with Findings of Fact; or
4. Remand the case back to the Planning Commission.

ATTACHMENTS:

Article 22 Redline

ARTICLE 22 – SPECIAL USE PERMITS AND TEMPORARY USE PERMITS

Section 1. GENERAL

Certain uses, specified in this Article or other Articles, are of a type or nature which may be desirable or necessary to be located in the County, but, due to their nature, may be incompatible with the surrounding area without a thorough review and possibly the placing of conditions on the use to protect the health, safety and welfare. As specified in these regulations, these specific uses may be permitted only after the approval of a Special Use Permit or a Temporary Use Permit by the Board of County Commissioners. A maximum of two special use permits shall be allowed per parcel. All valid Special Use Permits which remain in compliance with the approved conditions of the permit or have no substantiated complaints shall be approved without expiration upon approval of this amendment.
(BOCC Resolution 2009-41; August 27, 2009)

Section 2. SPECIAL USE PERMITS – APPLICATIONS

Applications for a Special Use Permit may be made by any person(s) who own(s) the land for which a Special Use Permit is sought, or an agent of the land owner(s) as defined below. In the case where approval of the permit is a contingency on the sale of the property, the Permit may be approved for the specific purchaser. If such application is made by the owner's agent, the agent must attach a letter signed (and notarized) by the owner(s) or some other appropriate legal documentation authorizing the person as the owner's agent. A Special Use Permit, when approved, is granted to the specific property on which approval is sought, and is nontransferable to another property. If ownership of the property is transferred, the new owner(s) must notify the Leavenworth County Planning & Zoning Department within 60 days, showing proof of ownership in the form of a deed or notarized affidavit. If no such notification is made, the Permit shall automatically become void.

All applications for Special Use Permits shall be made to the Administrative Officer on such forms as are provided. All applications for a Special Use Permit shall include a Site Plan. Site Plans shall meet the requirements of *Article 27 – Site Plan Approval; Section 4. Site Plan Contents*. The exceptions to this requirement are as follows:

- a. Site Plans may not require the seal of a licensed professional unless specifically requested by the Director of the Planning and Zoning Department,
- b. any other listed requirement in *Article 27; Section 4* may be waived based on the determination of the Director of the Planning and Zoning Department.

Immediately upon receipt of a complete application, with the fee required by the Leavenworth County Fee Schedule as adopted by the Board of County Commissioners, the Administrative Officer shall note the date and make a permanent record thereof. All such hearings shall be set for hearing before the Planning Commission within sixty (60) days of submission of a complete application. Notice of hearing shall be published in the official county newspaper not less than twenty (20) days prior to the date of the hearing. In addition, notices shall be sent by mail to the owners of all property located within the unincorporated area of the county within one-thousand (1,000) feet of the area proposed for a Special Use Permit (the notice area shall extend two hundred (200) feet in those areas where the notification area extends within the corporate limits of a city) at least twenty (20) days prior to the date of the hearing.

An application for a Special Use Permit, ~~twenty (20) copies of~~ a site plan, and any other supporting documents must be filed with the Planning Office at least forty-five (45) days prior to the Planning Commission meeting at which a public hearing on the proposed Special Use Permit is to be held.

(BOCC Resolution 2011-45, December 1, 2011)

If a person(s) have been found to be in violation of operating a business or use without a Special Use Permit, the application fee shall be doubled at the time of submittal.

Section 3. PROCEDURE

Following the public hearing, the Planning Commission shall make a recommendation for approval or disapproval of the application to the Board of County Commissioners. A majority vote of the membership of the Planning Commission is required in order to make a recommendation.

When the Planning Commission submits a recommendation of approval or disapproval of a Special Use Permit, the Board of County Commissioners may adopt the same, amend the recommendation, or disregard the recommendation by resolution. Upon receipt of a recommendation of the Planning Commission with which the Board of County Commissioners disagrees, the Board of County Commissioners may return the recommendation to the Planning Commission with a written statement specifying the basis of disagreement. The Planning Commission may choose to reconsider the issue. After reconsideration of the same, the Planning Commission may resubmit their written recommendation, giving the reasons thereof, or submit a new recommendation. The Board of County Commissioners may only return a recommendation to the Planning Commission only one time.

(BOCC Resolution 2007-50; October 2, 2007)

Regardless of the recommendation of the Planning Commission, if a valid protest petition against a proposed amendment or Special Use Permit is filed in the office of the County Clerk within fourteen (14) days after the date of the conclusion of the hearing, duly signed and acknowledged by the owners of twenty (20) percent of the total area, excepting public streets and ways, which is located within one-thousand (1,000) feet of the boundaries of the property for which a Special Use Permit is sought, such permit shall not be approved except by at least a $\frac{3}{4}$ vote of the Board of County Commissioners.

(BOCC Resolution 2019-23; September 4, 2019)

Section 4. LIMITATIONS ON SUCCESSIVE APPLICATIONS

In the event of a denial by the Board of County Commission of an application for any rezoning or special use permit affecting a tract of real property, no subsequent application for any rezoning or special use permit for that tract of real property shall be accepted by the County until 12 months has elapsed from the date of the denial, provided that upon a finding by the Board of County Commission that there has been a material change of circumstances affecting the tract, such an application may be accepted by the County prior to the expiration of the 12 month period.

(BOCC Resolution 2016-15; June 2, 2016)

Section 5. CONDITIONS OF APPROVAL

Every Special Use Permit issued by Leavenworth County to a non-governmental person, business or corporation shall be valid ~~for a specified period of time~~ without expiration. When necessary, the Board of County Commissioners may attach conditions to the approval of a Special Use Permit. Failure to abide by the conditions of the approval by the applicant shall be cause for an action to rescind approval of the Special Use Permit.

Section 6. FACTORS TO BE CONSIDERED

The following matters are to be considered by the Planning Commission and the Board of County Commissioners when approving or disapproving a Special Use Permit or Temporary Use Permit request:

1. Character of the neighborhood.
2. Zoning and uses of nearby property.
3. Suitability of the property for the uses to which it has been restricted.
4. Extent to which removal of the restrictions will detrimentally affect nearby property.
5. Length of time the property has been vacant as zoned.
6. Relative gain to economic development, public health, safety and welfare.
7. Conformance to the Comprehensive Plan.
8. Staff recommendation.

The Planning Commission and the Board of County Commissioners when approving or disapproving a Special Use Permit or Temporary Use Permit request may also consider the following matters, when appropriate:

Traffic / Parking	Location /Access
Archaeological / Historic significance	Topography / Drainage
Wildlife Presence	Ecological analysis
Design compatibility with surrounding area	Tax base implications
Vegetation analysis	Flood hazards
Soil survey	Sewage disposal
Market / Economic analysis	Water supply
Police / Fire / EMS protection	Air / Noise pollution
Demographic study	

Section 7. ~~ANNUAL REVIEW~~ PUBLICATION AND REVIEW

~~An annual review of the approved Special Use Permits shall be carried out by the Planning Department. The results of the review, along with any recommendations, shall be presented to the by the Planning Commission and the Board of County Commissioners by the 1st of March of each year. The Administrative Official shall create a list of all active Special Use Permits annually. Upon receipt of a substantiated complaint or evidence that a Special Use Permit has been modified or expanded, the Planning Department may request submittal of documentation or an inspection to be held to verify that conditions of a Special Use Permit have not been~~

violated. If a Special Use Permit has been found to not be in compliance with the conditions of their approval, the Planning Department shall proceed with code enforcement until the time that all violations have been remedied or the person(s) responsible for the Special Use Permit has applied and been approved for a modification to the application.

Section 8. TERMINATION OF APPROVAL

Cessation of the activity covered by an approved Special Use Permit for a continuous period of twelve (12) months shall be considered abandonment of the Special Use Permit.

Reestablishment of the activity shall require a new application and new approval of a Special Use Permit.

Following approval of a Special Use Permit, if it is necessary for the Permit to be reevaluated because of the creation of nuisances, or hazards to the public health, safety and/or welfare, the Board of County Commissioners may initiate the process to rescind approval of the Special Use Permit, such procedure to be the same procedure that was followed in approving the original Special Use Permit.

Section 9. SPECIAL USES

For a complete list of the Special Uses allowed in each district, refer to Article 19, Table of Uses.

Section 10. TEMPORARY USES

(BOCC Resolution 2019-23; September 4, 2019)

The purpose of this Article is to provide for the temporary use of land for special events in a manner consistent with its normal use and beneficial to the general welfare of the public. The following types of temporary uses are permitted in any district upon review and finding of the Department of Planning & Zoning that the proposed use is in the public interest. The use shall be approved for a specific short-term duration. The following is a list of typical Temporary Uses which may be reviewed and permitted by the Director of Planning and Zoning. In the event that the Director of Planning and Zoning denies the request, the applicant shall receive written notice from the Director within 10 days of application submittal.

Type 1: Fund-raising or non-commercial events for nonprofit religious, educational, or community service organizations; including any on-site signs and structures used in conjunction with the event. Examples of these types of events include, but are not limited to: fun runs, bicycle races, foot races, ATV rides, auctions and other related activities. The following items shall be required:

- a. Organizations with appropriate documentation of 501(c)(3) status shall be exempt from application fees for a Temporary Special Use Permit.
- b. Organizations with appropriate documentation of 501(c)(3) status shall be required to submit an application for a Temporary Special Use Permit. Applications and all required supporting documents, shall be submitted to the Planning and Zoning Department a minimum of 30 days prior to the anticipated event.
- c. The application shall require review and approval by the Road and Bridge Superintendent if the event is to be held on public roads or public rights-of-way.

- d. The application shall require review and approval by the Department of Emergency Management.
- e. In the event that Sheriff/Deputy presence is needed to control traffic, the applicant shall coordinate payment and scheduling directly with the Sheriff's department. This documentation shall be included with the application submittal.

Type 2: Fund-raising or non-commercial events for for-profit organizations: including any on-site signs and structures used in conjunction with the event. Examples of these types of events include, but are not limited to: fun runs, bicycle races, foot races, ATV rides auctions, and other related activities. The following items shall be required:

- a. Payment of application fee as set by the Board of County Commissioners per Resolution 2010-10 and as amended.
- b. Applications, and all required supporting documents, shall be submitted to the Planning and Zoning Department a minimum of 30 days prior to the anticipated event.
- c. The application shall require review and approval by the Road and Bridge Superintendent if the event is to be held on public roads or public rights-of-way.
- d. The application shall require review and approval by the department of Emergency Management.
- e. In the event that Sheriff/Deputy presence is needed to control traffic, the applicant shall coordinate payment and scheduling directly with the Sheriff's department. This documentation shall be included with the application submittal.

Type 3: Fireworks stands either non-profit or for-profit: including any on-site signs and structures used in conjunction with the event. The following items shall be required:

- a. Payment of application fee as set by the Board of County Commissioners per Resolution ~~2019-XX~~2020-46. (Staff is recommending a fee based upon costs associated with inspections and staff review process)
- b. Applications, and all required supporting documents, shall be submitted to the Planning and Zoning Department a minimum of 30 days prior to the opening of the fireworks stand.
- c. Fireworks stands shall not be permitted on public roads or within public rights-of-way.
- d. Applications shall require review and approval by The Department of Emergency Management.
- e. Fireworks stands shall be located on private property and applicants shall submit with application an "Owner's Authorization" with property owners' signature and the Authorization shall be notarized.
- f. Applicants shall submit proof of required insurance and applicable bonds.
- g. Adequate off-street parking shall be required.

Section 11. TEMPORARY USES REQUIRING BOARD OF COUNTY COMMISSION REVIEW
(BOCC Resolution 2019-23; September 4, 2019)

The following temporary uses are permitted in any district upon review and finding of the Board of County Commissioners that the proposed use is in the public interest. The use shall be approved for a specific short-term duration and shall be subject to conditions.

Type 4: Public or private events intended primarily for entertainment or amusement, such as concerts, festivals, carnivals, circuses or parades, or as temporary “one-time” activities of a generally short durations, particularly such activities as “locational” work by film companies

Type 5: The temporary placement of a laydown yard, portable asphalt or concrete plant and attendant materials and equipment during construction work on any public road or public infrastructure. All other temporary uses that are similar to the listed uses in function, traffic-generating capacity, and effects on other land uses.

Type 6: Any use which would normally require a Special Use Permit but in situations which the Board of County Commissioners determine should only be approved for a specified period of time.

Notification Requirements

Events requiring a Temporary Special Use Permit which requires review and approval by the Board of County Commissioners shall require public notification and a public hearing.

1. Events associated with a singular parcel shall require written notification to neighboring property owners within 1000 feet of the property seven (7) days prior to the public hearing.
2. Events occurring throughout the County, such as: Filming shall require public notice...via publication in the local Newspaper seven (7) days prior to the public hearing. (BOCC Resolution 2015-35; September 24, 2015)

Application Requirements

The following items shall be required for a Temporary Special Use Permit:

- a. Payment of application fee as set by the Board of County Commissioners per Resolution 2010-10 and as amended.
- b. Applications, and all required supporting documents, shall be submitted to the Planning and Zoning Department a minimum of 30 days prior to the anticipated event.
- c. The application shall require review and approval by the Road and Bridge Superintendent if the event is to be held on public roads or public rights-of-way.
- d. In the event that Sheriff/Deputy presence is needed to control traffic, the applicant shall coordinate payment and scheduling directly with the Sheriff's department. This documentation shall be included with the application submittal.

- e. Not more than three (3) Temporary Special Use Permits per parcel shall be granted each year. (BOCC Resolution 2015-35; September 24, 2015).

Section 12. PRIVATE EVENTS

(BOCC Resolution 2019-23; September 4, 2019)

Events meeting the definition of “Private Event” as defined by Article 3- Definitions- of these Regulations shall not require a Temporary Special Use Permit.

RESOLUTION 2022-08

A resolution of the Leavenworth County Kansas Board of County Commission, to amend the following articles of the 2006 Zoning and Subdivision Regulations:

Article 22– Special Use Permits and Temporary Use Permits

(See Attachment A)

WHEREAS, it is hereby found that the Leavenworth County Planning Commission, after notice as required by law, did conduct a public hearing upon the amendment of the Leavenworth County Zoning and Subdivision Regulations the 9th day of March, 2022; and

WHEREAS, it is hereby found that the Leavenworth County Planning Commission, based upon specific findings of fact incorporated by reference herein, did recommend that the amendment be approved, as set forth; and

WHEREAS, the Board of County Commission considered, in session on 30th day of March, 2022, the recommendation of the Leavenworth County Planning Commission.

NOW, THEREFORE, BE IT RESOLVED by the Board of County Commission of Leavenworth County, Kansas, that:

1. Based upon the recommendation and findings of fact of the Leavenworth County Planning Commission; and,
2. Based upon the findings of fact adopted by the Board of County Commission in regular session on the 30th day of March, 2022 and incorporated herein by reference;

That the amendments listed herein be approved:

Adopted this 30th day of March, 2022
Board of County Commission
Leavenworth, County, Kansas

Mike Smith, Chairman

ATTEST

Jeff Culbertson, Member

Janet Klasinski

Vicky Kaaz, Member

Doug Smith, Member

Mike Stieben, Member

ARTICLE 22 – SPECIAL USE PERMITS AND TEMPORARY USE PERMITS

Section 1. GENERAL

Certain uses, specified in this Article or other Articles, are of a type or nature which may be desirable or necessary to be located in the County, but, due to their nature, may be incompatible with the surrounding area without a thorough review and possibly the placing of conditions on the use to protect the health, safety and welfare. As specified in these regulations, these specific uses may be permitted only after the approval of a Special Use Permit or a Temporary Use Permit by the Board of County Commissioners. A maximum of two special use permits shall be allowed per parcel. All valid Special Use Permits which remain in compliance with the approved conditions of the permit or have no substantiated complaints shall be approved without expiration upon approval of this amendment.
(BOCC Resolution 2009-41; August 27, 2009)

Section 2. SPECIAL USE PERMITS – APPLICATIONS

An application for a Special Use Permit, a site plan, and any other supporting documents must be filed with the Planning Office at least forty-five (45) days prior to the Planning Commission meeting at which a public hearing on the proposed Special Use Permit is to be held.
(BOCC Resolution 2011-45, December 1, 2011)

If a person(s) have been found to be in violation of operating a business or use without a Special Use Permit, the application fee shall be doubled at the time of submittal.

Section 5. CONDITIONS OF APPROVAL

Every Special Use Permit issued by Leavenworth County to a non-governmental person, business or corporation shall be valid without expiration. When necessary, the Board of County Commissioners may attach conditions to the approval of a Special Use Permit. Failure to abide by the conditions of the approval by the applicant shall be cause for an action to rescind approval of the Special Use Permit.

Section 7. PUBLICATION AND REVIEW

The Administrative Official shall create a list of all active Special Use Permits annually. Upon receipt of a substantiated complaint or evidence that a Special Use Permit has been modified or expanded, the Planning Department may request submittal of documentation or an inspection to be held to verify that conditions of a Special Use Permit have not been violated. If a Special Use Permit has been found to not be in compliance with the conditions of approval, the Planning Department shall proceed with code enforcement until the time that all violations have been remedied or the person(s) responsible for the Special Use Permit has applied and been approved for a modification to the application.

Section 11. TEMPORARY USES REQUIRING BOARD OF COUNTY COMMISSION REVIEW

Type 6: Any use which would normally require a Special Use Permit but in situations which the Board of County Commissioners determine should only be approved for a specified period of time.

Resolution 2022-09 Comprehensive Plan Annual Review

Staff Report – Board of County Commissioners

March 30, 2022

GENERAL INFORMATION:

Applicant: Leavenworth County Planning and Zoning Department

Planner: Krystal Voth

REQUEST:

The 2022 Comprehensive Plan Annual Review is a state requirement to ensure that the recommendations of a community's plan are being regularly reviewed and compared to the actions being taken. As part of the 2022 Annual Review process, the County has held two Board of County Commission study sessions, a joint Board of County Commission/Planning Commission Study Session, one listening session open to the public, and one Planning Commission study session. Based on the comments received, the Planning Commission recommends the following:

- Discouraging the rezoning and splitting of lots in already subdivided and developed neighborhoods
- Amended the Future Land Use Map to the original proposed map
- Proceed with the proposed language amendments as outlined in the 2022 Comprehensive Plan Strategy Status

STAFF RECOMMENDATION:

The Planning Commission voted 6-1 to recommend approval of Case No.DEV-22-001, 2022 recommendations to amend the Comprehensive Plan.

ACTION OPTIONS:

1. Approve Resolution 2022-09 Amendment to the Leavenworth County Comprehensive Plan, with Findings of Fact, and with or without conditions; or
2. Deny 2022-09 Amendment to the Leavenworth County Comprehensive Plan, with Findings of Fact; or
3. Revise or Modify the Planning Commission Recommendation to Resolution 2022-09 Amendment to the Leavenworth County Comprehensive Plan, with Findings of Fact; or
4. Remand the case back to the Planning Commission.

ATTACHMENTS:

2022 Comprehensive Plan Strategy Status
August 2020 Future Land Use Map
Public Input
Resolution

Comprehensive Plan – 2022 Review

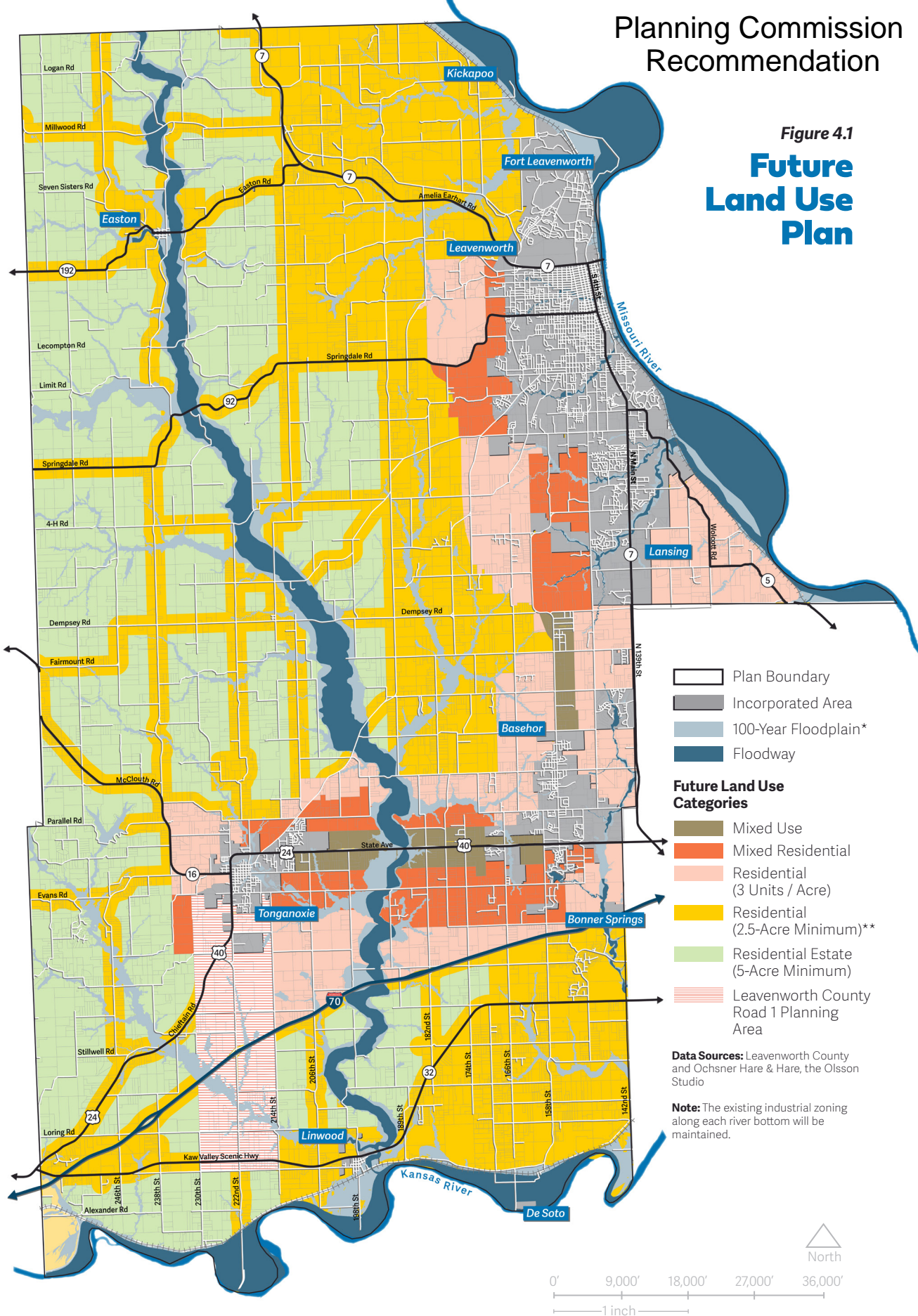
Strategy	Status	Planning Commission Recommendations
Section 4 0 Land Use & Development Plan		
Align county zoning and subdivision regulations with the targets and strategies stated in this plan	In Progress <ul style="list-style-type: none"> Lot-depth to Lot-width ratio 	
Identify and prioritize commercial and mixed-use development along key corridors and at strategic nodes with a high degree of access to major transportation routes	Completed/In Progress <ul style="list-style-type: none"> US 24/40 Corridor Between Basehor and Tonganoxie – Future Land Use Map recommends Planned Unit Developments Intersection of US 24/40 and CR-1 – County Road 1 has been rezoned 155th Street between Basehor and Lansing (long term) 	
Focus County investment in unincorporated areas positioned for industrial growth, especially on high access transportation	Completed <ul style="list-style-type: none"> County hired an Economic Development Specialist 	
Establish different categories of special use permits with varying submittal requirements and factors to be considered	In Progress/Under Review <ul style="list-style-type: none"> Discussion about not placing term limits on SUPs, except on rare occasions Discussion about expanding Home Occupation Licenses to include other types of businesses 	
Promote efficient residential densities, types and values		<ul style="list-style-type: none"> Discourage the rezoning of existing subdivisions and developed neighborhoods Recommend adopting the proposed Future Land Use Map
Explore and adopt appropriate county building codes that primarily protect the health, safety and welfare of residents	Completed <ul style="list-style-type: none"> Buildings Codes adopted March 2021 	
Utilize a “land first” or conservation-based approach to planning in unincorporated areas of the county to minimize premature development of agricultural land		

Utilize the Land Evaluation component of the Land Evaluation and Site Assessment (LESA) system to identify and encourage the protection of the most productive farmland.		
Section 5 – Transportation and Mobility Plan		
Fund, develop and adopt a Transportation Master Plan to determine appropriate and prioritized connectivity improvements	In Progress <ul style="list-style-type: none"> County Street Interconnection Plan Regional Transportation Plan 	
Develop and adopt updated county road standards according to current best practices, such as those published by FHWA		
Implement proposed existing road upgrades, proposed future roadway connections, and potential rural roundabouts	Annually Approved <ul style="list-style-type: none"> Capital Improvement Plan 	
Further evaluate the potential new/upgraded major corridors		
Capitalize on the access to rail and water transport along the southern and eastern edges of the county to facilitate economic development	In Progress <ul style="list-style-type: none"> Regional Transportation Plan 	
Accommodate future transportation technologies, including the impacts of autonomous vehicles (AVs)		
Coordinate transportation planning efforts with other planning projects within Leavenworth County, especially the County Road 1 Land Use Analysis	In Progress <ul style="list-style-type: none"> Regional Transportation Plan 	
Implement the Kansas City Regional Bike Plan planned regional bike trails		
Implement the MetroGreen Regional Greenway System planned trails and proposed trails to enhance the countywide trail systems		
Align future transit decisions with development patterns while maintaining existing service to senior populations	In Progress <ul style="list-style-type: none"> Regional Transportation Plan 	
Section 6 – Community Facilities and Infrastructure Plan		
Develop a utility master plan that fully assesses the county's utility infrastructure including current conditions, expected lifespan, reliability, and expansion strategies that align with projected growth	In Progress <ul style="list-style-type: none"> Public Utilities Commission 	

Study and enhance public safety services to ensure all life and property within Leavenworth County is adequately protected.		
Be open to opportunities for renewable energy to illustrate Leavenworth County's commitment to the environment while reducing reliance on non-renewable resources	In Progress <ul style="list-style-type: none">• Solar Farm Regulations adopted October 2021• Wind Farm Regulations draft	

Planning Commission Recommendation

Figure 4.1
Future Land Use Plan



* Also known as Zone A or Zone AE, which are FEMA-defined Special Flood Hazard Areas

** Residential (2.5-Acre Minimum) is the designated future land use within a quarter-mile of each side of the centerline of all improved roads within Leavenworth County, unless the quarter-mile area on either side of the centerline of an improved road is designated as a denser future land use, such as Residential (3 Units / Acre), Mixed Residential, or Mixed Use. "Improved" roads refer to all paved roads within Leavenworth County, not including those roads that have been hard-surfaced through the dust-abatement process. Due to sporadic data inaccuracy, Figure 4.1 Future Land Use Plan may show this quarter-mile Residential (2.5-Acre Minimum) buffer along roads that are not improved. In such cases, the Residential (2.5-Acre Minimum) quarter-mile buffer does not apply to either side of the unimproved road's centerline.



COUNTY OF LEAVENWORTH

From the desk of Commissioner Mike Stieben

300 Walnut, Suite 225

Leavenworth, Kansas 66048-2815

(913) 684-0417

Facsimile (913) 684-0410

email: bocc@leavenworthcounty.gov

January 4, 2022

Dear Commissioners;

Please consider placing the following language and policy into consideration as you discuss modifications to the current Comprehensive Land Use Plan.

“In the consideration of rezoning the Planning and Zoning Commission and the Leavenworth Board of County Commissioners as a matter of policy will take into account, and consider as a factor, the need for the preservation of large contiguous tracts of rural land for agricultural uses within the county. Subdivision growth within the county should be encouraged near the cities where water, sewer, and electrical connections are readily available as outlined in the Comprehensive Land Use Plan.”

Mike Stieben

Leavenworth County Commissioner District #5

Allison, Amy

From: BrennaLil <antyb39@aol.com>
Sent: Thursday, October 28, 2021 8:25 PM
To: bocc; PZ
Subject: Comprehensive plan comment

Notice: This email originated from outside this organization. Do not click on links or open attachments unless you trust the sender and know the content is safe.

This comment is regards to the annual review of the comprehensive plan. I speak for myself and include many neighbors.
We wish the committee would stop allowing 2.5 splits in already established 5 acre neighborhoods. Owners are aware when they buy the property what the R designation is. To come in and try to change up the layout 25-30 years after establishment upsets the neighborhood.
Thank you,
Brenda Little
McIntyre Rd.
Leavenworth

Allison, Amy

From: B k <kelloggcattlecompany@gmail.com>
Sent: Wednesday, November 17, 2021 8:07 AM
To: PZ; bocc
Subject: Re: Comprehensive Plan Input

Notice: This email originated from outside this organization. Do not click on links or open attachments unless you trust the sender and know the content is safe.

Thank you for your response. I was hoping that this body would hold a joint session for public input prior to finalizing your annual review.

The time should be after 6PM allowing those with work conflicts to attend and provide input.

As I have stated before, rezoning to allow smaller residential parcels is not holding to this communities identity and is causing undo hardship on the current residents. This is being done by allowing more residential builds (falsely raising property values on current residents, in turn causing taxes to increase), creating more stress on services and infrastructure that are already suffering (more taxes being needed), and forcing the schools to expand and increase their footprint and budget (more taxes being needed).

There has been limited business or industrial growth to help offset your growth plan, which is not helping residents endure the increased tax burden being placed on us. Please remember this before you make your final changes on the Comp Plan. We need you to listen and not fall victim to the developers, investors, realtors.

Thank you,

Brian Kellogg

On Fri, Oct 29, 2021, 22:41 B k <kelloggcattlecompany@gmail.com> wrote:

As you all are aware, I am a strong opponent of the Comprehensive Plan recommendations. I do however, want to thank you for allowing public input now that the Plan has had time to be implemented.

My family and I have lived in this county for more than 40 years and have served this community in multiple capacities. Our goal is to maintain the rural identity of this county and not lose what so many of us have worked to obtain (a safe, family friendly, rural community, with solid standards). To say growth is inevitable is not a sufficient answer to those of us pushing to keep this county strong. There is absolutely nothing wrong with being content and just improving what we currently have in place.

Leavenworth County is cursed because we are so close to other counties with huge municipalities. This causes their population to want to move to our communities when their counties & municipalities overdevelop and allow their infrastructure to deteriorate along with public services.

Leavenworth is the 6th largest county in Kansas, but this does not require us to take on more population than we can support. As stated in prior meetings, our infrastructure is already stretched, public services are understaffed, and we can't maintain what we already have. With the lack of business tax base, the county is courted by developers/ realtors to lessen the required amount of land required to develop residences. Doing this does not benefit current residents at all, and only adds a burden to those already established in this great county. When you are considered a sleeping community, you get to pay for more schools and pay more taxes for services and infrastructure improvements. We do this because most of the new residents primarily go out of town and spend their money at the Legends, Zona Rosa, or Overland Park. Please keep this in mind.

Making the build requirement to 5 or more acres to build a house in the county will allow growth, but at a much more manageable level. This will also have a lesser effect on our identity, water runoff, wildlife, etc. Also, keeping the smaller rezoning parcels tighter to the current municipalities would be beneficial to all involved and lessen the need of annexation. Lastly, when there are public comments at your meetings, these should have a higher level of importance than is currently given.

I hope this is not taken negatively, but as constructive feedback, and a request from a long time county resident.

Sincerely,

The Kellogg Family

Allison, Amy

From: Anderson, Kyle
Sent: Monday, November 29, 2021 8:00 AM
To: PZ
Subject: FW: Input for Land use planning

From: Stieben, Mike
Sent: Tuesday, November 23, 2021 9:54 PM
To: Anderson, Kyle <KAnderson@leavenworthcounty.gov>
Subject: Fwd: Input for Land use planning

Can you see to it this gentleman's comments are forwarded to all Planning Commission members and staff before the hearing?

Mike

Sent from my iPhone

Begin forwarded message:

From: Bryce Frederickson <brycefred01@hotmail.com>
Date: November 23, 2021 at 9:45:44 PM CST
To: "Stieben, Mike" <MStieben@leavenworthcounty.gov>
Subject: Input for Land use planning

Notice: This email originated from outside this organization. Do not click on links or open attachments unless you trust the sender and know the content is safe.

Greetings,

Thanks for allowing the opportunity to provide input for the future land use for the county. Please take these points to the Planning Commission. First I am retiring from the military and decided to settle down and make Leavenworth County home. I have traveled around the US and have seen many places and enjoy the Leavenworth area. I decided to have a little land and house in the county, there are some sacrifices with living in the county but the pluses outweigh the negatives. Here are my inputs.

1. The Future Planning Commission land map didn't have a date or date range on it. I feel that would provide a framework and some context. Just looking at the map and everything that has been broken into 2.5 acre plots is a little concerning.
 - a. If the current map is for 2020 to 2025 there is way to much 2.5 acre parcels, how will that be regulated, will there be subdivisions popping up everywhere. Developers will start buying land everywhere and throwing up cheap houses.
 - b. If the map is for 2026 to 2035, that makes a lot of sense, I understand that you cannot prevent growth if there is sustainable growth. I feel the hard part is to make sure it is done right.
2. I feel for the current timeframe and future use 5 acre plots for the majority of the county is the right way to go and for future growth, and make sure the county can sustain its growth. I feel the growth should take longer and make sure it is done right.

3. Part of wanting to make sure it is done right is the opportunity that I have had to see other counties that haven't managed growth well, and the hollow communities that are left behind.

Thank you
Bryce Frederickson

Sent from [Mail](#) for Windows

Stieben, Mike

From: amandahornerkc@gmail.com <amandala1234@gmail.com>
Sent: Monday, November 22, 2021 12:28 PM
To: Stieben, Mike; bocc
Subject: Comments on "Comprehensive plan impacts future of the county"

Follow Up Flag: Flag for follow up
Flag Status: Flagged

Notice: This email originated from outside this organization. Do not click on links or open attachments unless you trust the sender and know the content is safe.

Good morning Commissioner Stieben,

In the piece you wrote for the Leavenworth Times you asked residents for input on the Leavenworth County Comprehensive Plan, particularly on the issue of land use. Overall, my comments can be summarized by this: growth is good and change is inevitable.

According to 2019 US Census data, Leavenworth County experienced 7% population growth since 2010, and the cities of district 5 have experienced even higher: Tonganoxie- 11%; Basehor- 40%.

While I appreciate that one of the guiding principles of the plan is "preserve and sustain" and agree that maintaining agricultural farmland is important, given the rate at which our county is growing, I believe the "elevate and compete" is even more important.

Currently, there are not enough jobs or commercial opportunities for our district to be anything more than a bedroom community. I love living in Tonganoxie, but work in Kansas City and do much of my shopping in Wyandotte or Douglas Counties. My family attempts to go to Leavenworth to shop when we can, but given our location, it is often more convenient to go to other counties, which obviously means they receive a good portion of our tax revenue.

If we do not increase residential density, and create more opportunities within our cities and county for commercial and industry, rising taxes will be carried on residential shoulders.

I greatly appreciate the targets of the Land Use and Development section of the plan., especially items 2, 4, and 5.

2. Support new commercial, industrial, residential, and mixed use growth that balances the desire for economic development and a heightened tax base with Leavenworth County's predominantly small town feel and rural heritage.
4. Ensure residential development within the county meets the needs (including safety) and desires of various county residents and allows residents to age in place.
5. Build upon the county's multimodal infrastructure and locational advantages to expand industry and employment opportunities in key areas of the county.

Ideas such as the mixed use and mixed residential between Tonganoxie and Basehor is a fantastic use of resources. While I understand that there are many families who have always known Leavenworth County as rural, or perhaps moved here for the wide open spaces, growth is inevitable. Let's embrace this change strategically and open up other areas outside the city of Leavenworth for opportunities beyond a bedroom community.

Stieben, Mike

From: Cole Spickler <dsmispick@gmail.com>
Sent: Sunday, November 21, 2021 8:10 PM
To: Stieben, Mike
Subject: Land usages

Follow Up Flag: Flag for follow up
Flag Status: Flagged

Notice: This email originated from outside this organization. Do not click on links or open attachments unless you trust the sender and know the content is safe.

To whom it may concern,

Please do not rezone the county to accept 2.5 acre plots. My wife and I recently bought a house and chose this location and area because the plots were much bigger and not limited to the 2.5 that you are proposing. If you pass this it will change the natural beauty, and uniqueness of the land.

The people of Leavenworth county live here so they can enjoy life, away from the hustle and bustle of suburban life. My wife and I chose this location to raise and family where my future kids can run and play. Please keep it that way.

Thank you,

Cole Spickler

Stieben, Mike

From: Nickie Perry <nickieperry2003@yahoo.com>
Sent: Sunday, November 21, 2021 5:45 PM
To: Stieben, Mike
Subject: LV county plan

Follow Up Flag: Flag for follow up
Flag Status: Flagged

Notice: This email originated from outside this organization. Do not click on links or open attachments unless you trust the sender and know the content is safe.

My husband and I moved here in 1991 to live in a rural bedroom community. We are not interested in industrial or large businesses opening. Those never seem to pay taxes at least for their first 10 years and yet they overuse our infrastructure. We don't need the jobs either. Please don't make this a place people want to move away from.

Sent from my iPhone

Allison, Amy

From: Joe Herring <herringsurveying@outlook.com>
Sent: Wednesday, January 5, 2022 7:16 AM
To: Voth, Krystal; Allison, Amy
Subject: Fw: Comp Plan Work Session

Notice: This email originated from outside this organization. Do not click on links or open attachments unless you trust the sender and know the content is safe.

Sending this email for my support of the Comp Plan as it exists today. Please forward to Planning Commission or I can print hard copies if you would prefer for them.

Below are my thoughts on issues that have been discussed over the past year.

Map -

BOCC has stated that this should not change -
I would like to see the entire rural county goto RR 2.5

- Would allow equal opportunity for property owners / farmers to divide off the smallest tract possible whether for profit or family
 - Just because a farm is in the Southern portion they should not be given more financial opportunity due to a government zone
- Just because it is zoned for smaller tracts does not mean it has to be divided in that manner

Would also like to see a hard zone of the entire county

- Would get rid of the majority of the rezones and free up a lot of staff / meeting time
- If all goes to RR2.5 - current access management policy and other policies would control what type of development and how many tracts
-

Rezoning within a Subdivision

- Understand the idea that some people buy with a concept that nothing will be rezoned within a Subdivision
- Consideration should be given to the Subdivisions that were forced to plat very large tracts - some in excess of 40 or more acres
- Plats are given the right to replat or adjust lines

Lot Splits

- As long as Lots meet the zoning regulations all Lots should be given the right to be split. Especially the larger lots.
- If the BOCC would like to stop that then it should be a restriction on all Subdivisions going further - older subdivisions should be exempt

200 vs 300

- This concept goes against the original comp plan decision for RR 2.5 acre
 - BOCC wanted more houses for tax (ADU permits are also a great example of more rooftops for taxation)
 - BOCC stated that the county should embrace the Rural Residential Classification and develop accordingly (RR-2.5)
 - BOCC also stated that the county should take advantage of their assets - hard surface road and create as many lots as possible along these roads
 - Protecting AG with RR 2.5 was not the main determination for all of the RR 2.5 acre zones - it was the same zone on each side of the street along hard surface roads
- Concept also devalues farmland and land is what most farmers have for assets.
 - Less lots/tracts would be allowed along the front of the property - road frontage property is the most valuable in most cases - if you reduce the number tracts allowed, logically you devalue the property. I am pretty confident that the BOCC does not want to devalue farmland or farmer's property.
- County Access Management Policy and Road Classification handles how many tracts are allowed along the road - this is just idea trying to fix a non-existing problem.
- Areas that are already zoned RR 2.5 or designated for RR 2.5 should be exempt
- This is what was sent to a commissioner as a possible alternative to a blanket 200 to 300 regulation
 - Create a new zone RR-2.5(A) - Rural Residential-2.5 Agriculture

300 foot road frontage - allows for the SACSHE FARM type development in the Rural part of our county.

Do this during the comp plan meetings that are coming up.

Zone all remaining 5 acre (per the comp plan) to the new classification.

People in the comp plan that is shown for RR 2.5 can opt for either rezone in the process.

All existing RR 2.5 remains the same and the county is not devaluing any property by their actions.

Large AG Zoned Tracts/Areas - RR-20, RR-40, or AG Protected Areas

- Flood Plain already projects a large portion of farmland from being developed.
- Large Tracts / Protected Areas should not be forced on owners by government.
- If BOCC would like to see these areas then create the zoning but leave it up to the owner if they would like to place the zoning or AG protection on their property. It should be the right of the property

owner and not the right of a handful of county residents or County to decide if they always want their property to be AG / farmland.

Thank you - Joe Herring

J.Herring Inc., dba,Herring Surveying Company
315 N. 5th Street, Leavenworth, KS 66048
913-651-3858 - ROCK CHALK!

Rural Leavenworth, Inc.
P. O. Box 60
Basehor, KS 66007
info@ruraleavenworth.org



October 25, 2021

Re: Leavenworth County Comprehensive Plan

BOCC & Planning:

The following comments are provided for consideration during the annual review of the Comprehensive Plan.

- New development within an existing subdivision should be consistent with the existing parcel sizes. People purchase property based on the existing zoning and the expectation that it will not be rezoned.
- A higher priority should be given for surrounding property zoning on rezoning requests for new subdivisions. See Exhibit 1 for an example. This is especially important for larger subdivisions that are proposed in large parcel areas.
- Recommend all rezoning requests are accompanied with a high-level plan on why the rezoning is requested.
- Renewals of existing Special Use Permits should be “grandfathered” and not denied just because of the land use map. This supports the County’s position of wanting to be “business friendly”. It also helps the business owner by not having to relocate.
- New Special Use Permits should be considered on a case-by-case basis and should not automatically be denied because of the land use map. Use the facts presented to make decisions.
- Consider limitations on the number of septic tanks that can be installed within a given area. Not sure if this is already defined but want to ensure public health is not compromised.
- Ensure there are ample amounts of green space protected as development occurs. This helps preserve the rural feel of the county, keeps run-off to a minimum and provides protection for wildlife.
- One suggestion received from our online input form is to phase in the 2.5 acres as the areas to the cities fill in.
- Reiterate with Planning Department and Planning Commission that the land use map is a guideline and there is flexibility based on the facts presented. Document examples where it does or doesn’t make sense to follow the guideline.

One observation is that persons making public comments on rezones are downplayed during the public hearings when they mention traffic, water runoff or flooding. The common response is “this is just rezoning”. Because there is no public hearing associated with the plat, the public should not be downplayed.

Anything you can do to provide an opportunity for more dialogue with the community would be appreciated. Public comment during a BOCC meeting or a public hearing are not sufficient for asking questions or having meaningful dialogue. This can benefit BOCC not just the public. It gives you the opportunity to build public trust and explain why certain things are important to the BOCC.

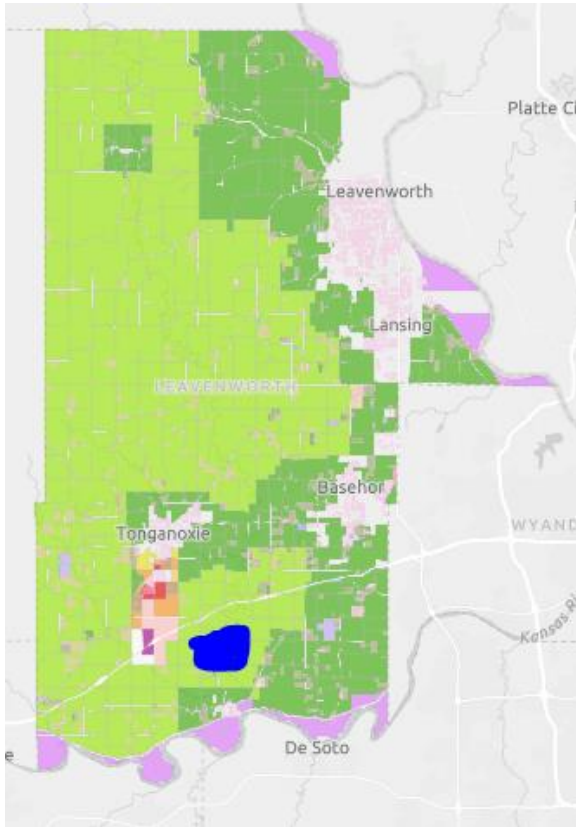
Thank you for the opportunity to provide comments.

Sincerely,

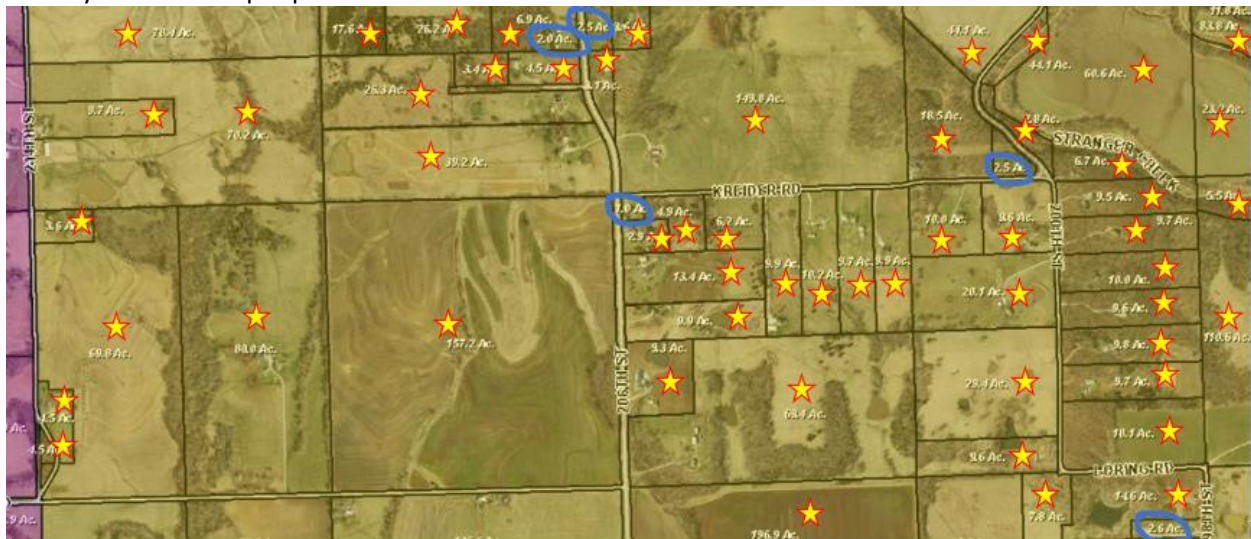
Sherri Grogan
President
Rural Leavenworth, Inc.

Exhibit 1

The selected area shown in blue highlight on the first map is further analyzed in the second map.



Shown below are 60 parcels totaling 1,703.4 acres in a 2.5-acre land use area. Only 8.3% of the parcels (5 of 60) totaling 10.6 acres are ≤ 2.5 acres (.6% of total acreage in the picture). In this example, the character of the neighborhood is agricultural and rural. A 2.5-acre development would not be desirable by most of the people in the area.



RESOLUTION 2022-09

A RESOLUTION OF THE BOARD OF COUNTY COMMISSIONERS OF THE COUNTY OF LEAVENWORTH, KANSAS, REVIWING AND AMENDING A PORTION OF THE COMPREHENSIVE PLAN FOR THE COUNTY AS AUTHORIZED BY K.S.A. 19-2958

WHEREAS the board of county commissioners of the county of Leavenworth, Kansas, has determined that it is the best interests of the citizens of the county that a comprehensive plan for the coordinated development of the county; and

WHEREAS the board of county commissioners requested that the planning commission of the county undertake the review of such plan through the comprehensive study and survey of past and present conditions, land use, population, building intensity, public facilities, transportation and transportation facilities, economic conditions, natural resources and the desires of the citizens of the county regarding the development of the county; and

WHEREAS the planning commission of the county undertook such study and conducted public hearings seeking input from the cities, citizens and interest groups within the county; and

WHEREAS the planning commission, upon the completion of the aforementioned preparation, considered a proposed amendment to the comprehensive plan for the county at a public hearing conducted on March 9, 2022, with proper notice having been provided; and

WHEREAS the planning commission did approve said proposed amendments to the comprehensive plan at the conclusion of the public hearing conducted and forwarded said proposed comprehensive plan to this board of county commissioners for consideration for adoption in whole or in part; and

WHEREAS this board did conduct a hearing to consider the adoption of said comprehensive plan, in whole or in part, on this 30th day of March, 2022, at a regularly scheduled meeting;

NOW BE IT THEREFORE RESOLVED:

1. That this board finds that all notices required under K.S.A. 19-2958 have been properly provided.
2. That the planning commission considered for adoption, in whole or in part, the comprehensive plan prepared at their direction at a public hearing conducted on March 9, 2022. Further, that upon the conclusion of the pubic hearing the planning commission did approve said comprehensive plan and with that recommendation forwarded the same to this board.
3. That upon careful study and deliberation this board finds that said comprehensive plan, referred to as "Leavenworth County Comprehensive Plan", as prepared by Oschner Hare & Hare of the Olsson Studio, satisfactorily addresses the issues regarding the comprehensive and coordinated development of the county as charged to the planning commission.

4. That the entirety of the comprehensive plan recommended by the county planning commission for adoption by this board as identified in paragraph 3 of this resolution is hereby adopted as the comprehensive plan for the county of Leavenworth, Kansas and fully incorporated herein.

5. That an attested copy of the comprehensive plan adopted herein shall be filed and maintained for public inspection in the offices of the Register of Deeds, Clerk and Planning and Zoning Department of the county.

6. That the planning commission annually review the comprehensive plan adopted herein and provide to this board any recommendations for amendments, additions or extensions to said plan.

RESOLVED THIS 30TH DAY OF MARCH, 2022.

MICHAEL SMITH, CHAIR

JEFF CULBERTSON, 1ST DISTR.

VICKY KAAZ, 2ND DISTR.

DOUG SMITH, 4TH DISTR.

MIKE STIEBEN, 5TH DISTR.

ATTEST:

JANET KLASINSKI, COUNTY CLERK